

Kiribati International Waters (IW) Ridge to Reef Project

Kabwarabwaraan te Karikirake

Teema Biko – Kiribati IW R2R Project Manager



Karaoaki iaa te Karikirake? Tarawa nte tabo n ran i Bonriki and Buota



Kabwarabwaraan Te Karikirake

Oin Te Kantaniga n te Karikirake

Manina

Kanoan te Karikirake

Te tia Buoka

Mwaitin Mwanena

Katamaroan te tararua iaon bibitakin kanoan boong nakon te reita ni maeu/kaubwain iaon te aba ao taari. Te Karikirake aio e na taraa te kangaanga ae te kabarakaraka man te oo-ni-beeki nakon te ran ao te rakai.

18 Namwakaina

North and South Tarawa – Bonriki and Water Reserve Areas

GEF Trust

USD \$200,000

New logframe 2019

Takete: Kauarerekean mwakuri aika ana roota marurungin te aomata ao ara reita ni maeu ma kaubwain te aban (stree reduction target). Kauarerekea Mwaitin kemikoro man te oo-ni-beeki (Total Nitrate)

Mwakoro 1: Karikirakean rabakauia rabwata aika uarereke nte kaawa (communities) nte tabo n ran rinanon waaki ni REIREI iaon katei n oo-ni-beeki ae uarereke ana urubwai nakon te Enwaromenta ao marurungia te aomata.

Mwakoro 2: Mwakurian/katean katei n oo-ni-beeki ikai ma rabwata aika uarereke (communities)

Mwakoro 3:

Barongan ao kabobongan rongorongon kamatebwai/rabakau iaon te katei n oo-ni-beeki aika uarereke ana urubwai nakon te Otabwanin, ibukin karababaan ao titibbwaan te atatai ma taian rabakau ni kauarerekea te kabarakaraka man nakorariaa maan

Mwakoro 1

Mwakoro 1:

Karikirakean rabakauia rabwata aika uarereke nte kaawa (communities) nte tabo n ran rinanon waaki ni reirei iaon te katei n oo-ni-beeki ae uarereke ana urubwai nakon te Enwaromenta ao marurungia aomata

Mwakuri aika ana karaoaki:

1. Katean te komete ae te “Volunteer Piggery Waste Management Networks)
2. Karaoan te anga reirei nakoia komete iaon anga ni karekean mwaane ni buoka ibukin kateimatoan te Karikirake aio
3. Karaoan te Kakaongora ao te anga reirei

Mwakoro 2

Mwakoro 2: Mwakurian/katean katei n oo-ni-beeki ikai ma rabwata aika uarereke (communities)

Mwakuri aika ana karaoaki:

1. Katamaroan waaki n tararua nakon te manimani beeki n karaoakin te kakatai iaon te kabanea n tamaroa n katei n oo-ni-beeki ae boboto iaon rabakau aika boou ao nakoraoi naba ibukin Kiribati
2. Kamanoan te Enwaromenta ao mauraoya aomata man kauarerekean te kabarakaraka ao mannaoraki man te oo-ni-beeki
3. Karababaan rabakauia ao aia atatai ana rabwata nako te Tautaeka iaon ibukin tuutuoan marurungin ara ran (mwanibwa)

Mwakoro 3

Mwakoro 3:

Barongaana ao kabobongaana iango ma rabakau ni rekereke ma te katei n oo-ni-beeki ikai are e na kona iai n buoka aron karababaan ao titibbwaan te atatai ma taian rabakau ni kauarerekea te kabarakaraka man nakorarii maan

Mwakuri aika ana karaoaki:

1. Kabobongaana iango ma rabakau ikai barongaaki ibukin tuutuoan mwiin wakinan te Karikirake ibukin Karikirakean ao tibwatibwaan te atatai ma rabwakau ni irekereke ma te manimani beeki ao Irekerekena ma Enwarometa ao mauraioia aomata
2. Karaoan kainibaire ake ana buotoka butimwaeana ao kateimatooan rabakau ibukin mwakurian te oo-ni-beeki Improved knowledge based & access for effective decision making
3. Korean te Riiboti ae kaota mauraoin te Aba ao Marin Taari
4. Katauraoran te kainibaire ibukin mwakurian kanoan te Karikirake (National R2R Strategic Action Plan)



Kam Rabwa

Teema Biko – IW Project Manager

GEF/UNDP/SPC Kiribati R2R IW Project

ECD - MELAD

teemab@environment.gov.ki

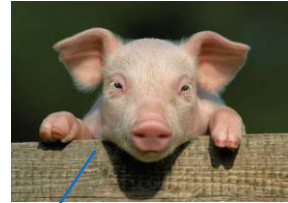


Raioiroin te option ae te Dry Litter Technology

DRY LITTER

- E uarereke mwakurian ao mani boraioi kateana
- E beeki ae karaoa te kamkamka kabonganaaki
- E aki kabonganaaki te ran ao n akea naba te boi n nako man te oo-ni-beeki
- E buoka marurungin te beeki ao tamaroan irikona ibukin te kanaki

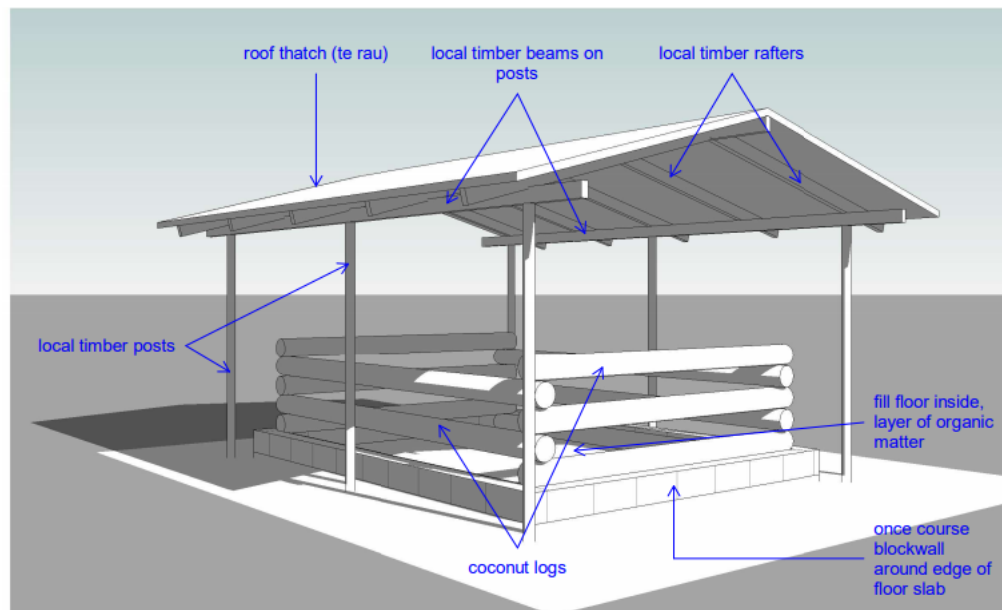
Option – Dry litter Technology



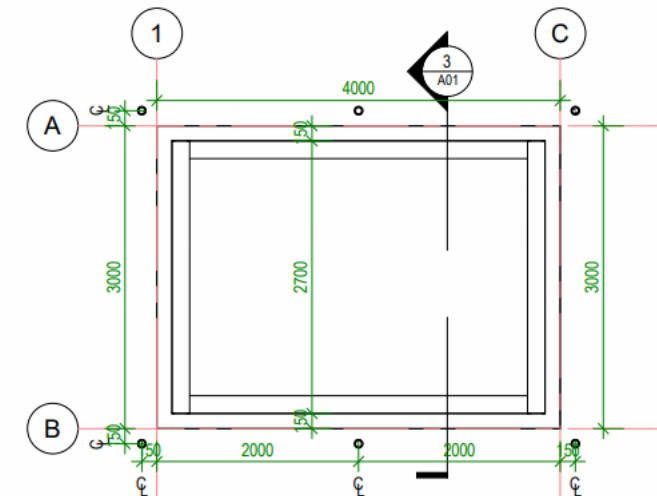
Environment & Health Issue



DESIGN AND MODEL OF PIGPEN - MODEL 1

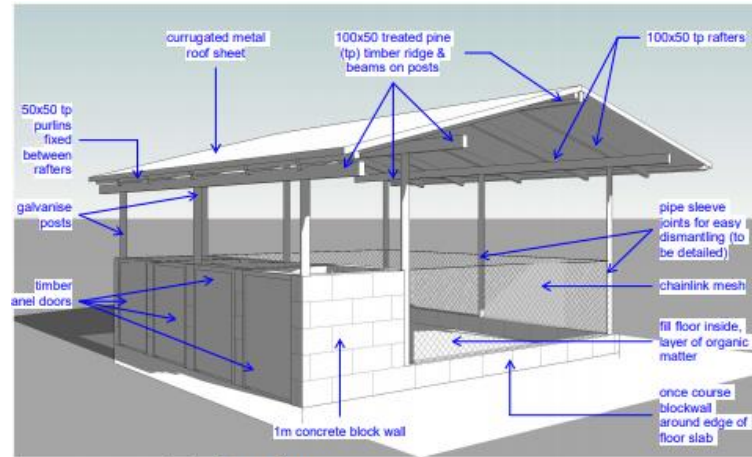


2 Perspective
Scale: _____

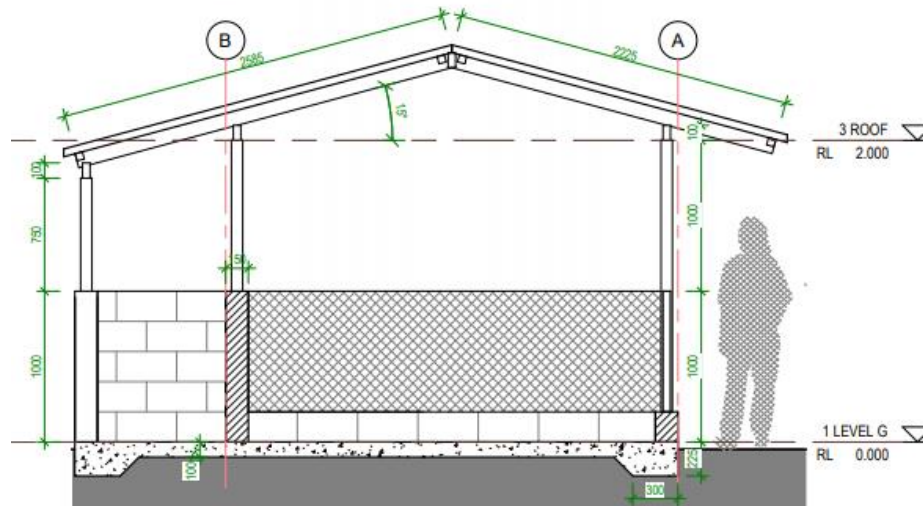


1 Plan
Scale: 1 : 50

MODEL 2

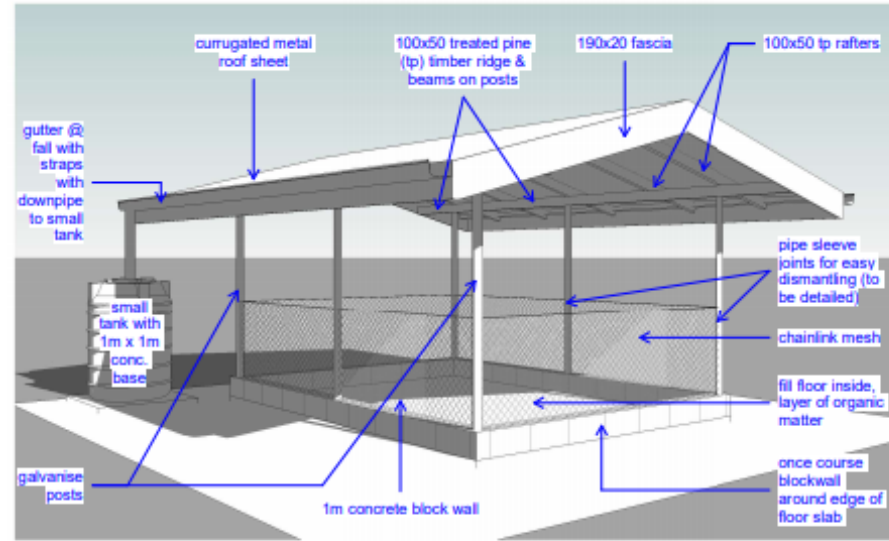


2 Perspective
Scale:

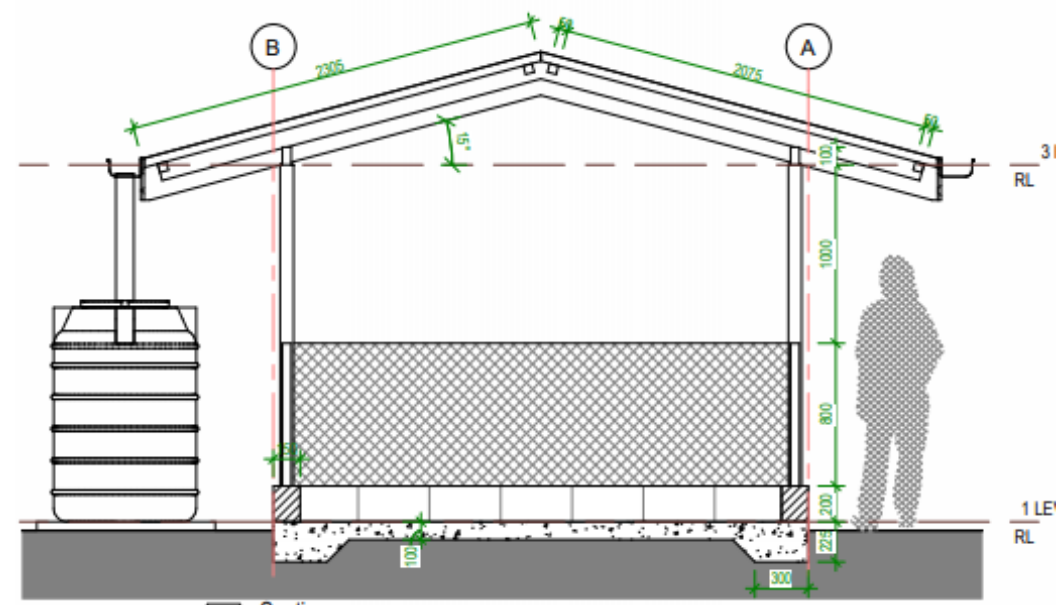


2 Section

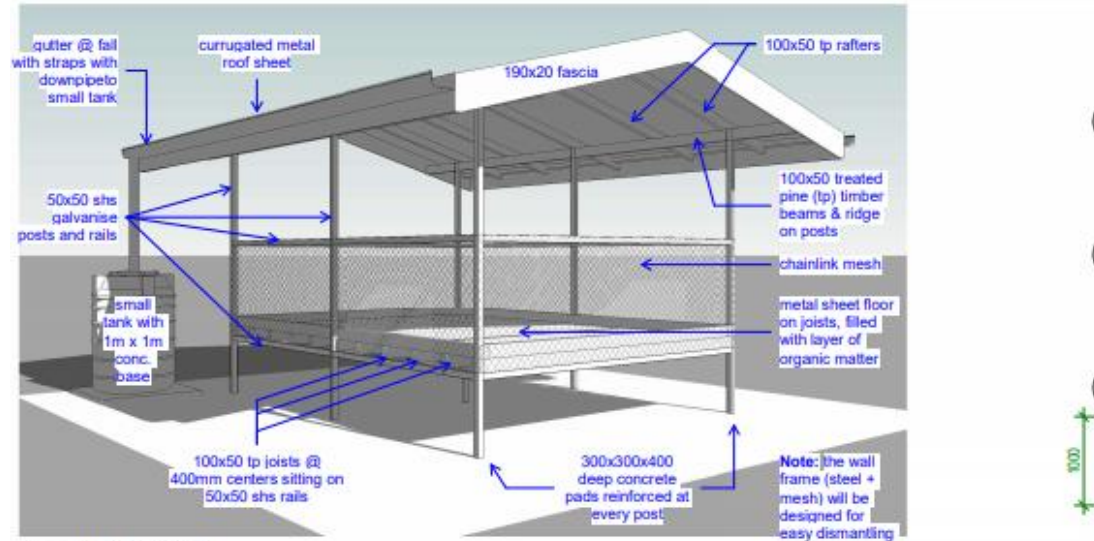
MODEL 3



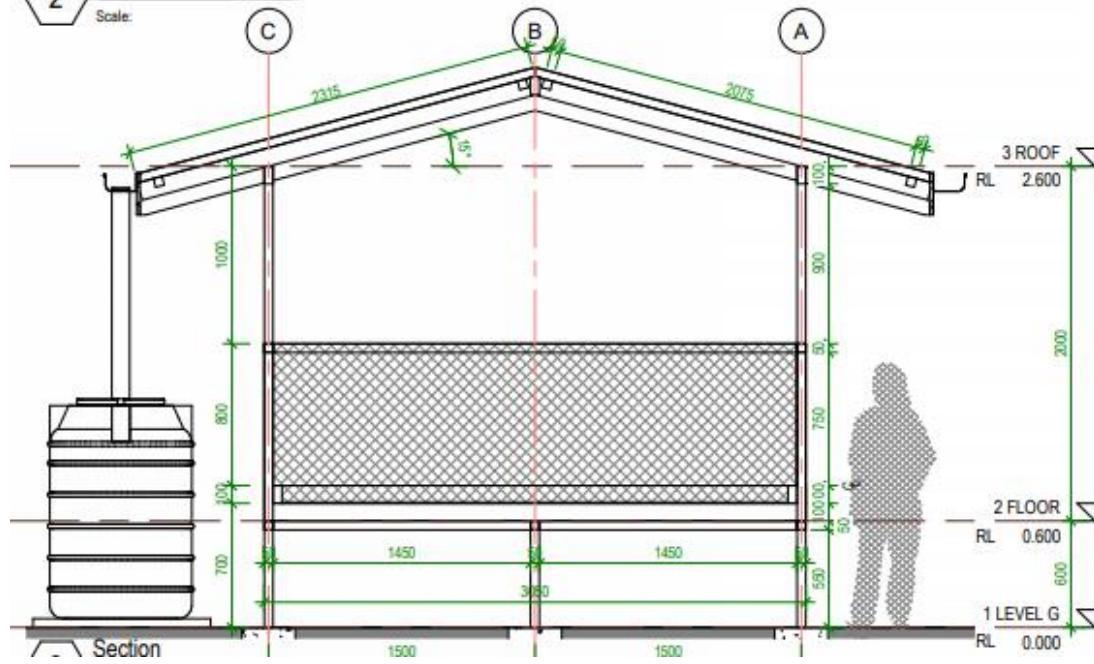
2 Perspective
Scale:



MODEL 4



2 Perspective
Scale:



SELECTION CRITERIA

- Household that active in the community
- Household must have landlord certificate ownership
- Household must have pigs in pens
- Household located outside water reserve area
- Household agree to work voluntary to construct the pigpen and whosoever to involve in the construction should possess carpenter skill (including knowledge to follow design model)

CONTI..

- Household must have or must develop home garden
- Must be able to comply with all construction rules and will not misuse the construction material provided under the project for other purposes.
- Household agree to adhere to important timeframes and milestone in constructing, maintaining, and sustaining the pigpen.
- Agree to the term and reference of the Community-based Volunteer Piggery Waste Management network.