



Palau International Waters Ridge to Reef Project

By: Ministry of Natural Resources,
Environment, & Tourism



Final Report 2016-2020

Prepared by: **Leena S.M. Mesebeluu**
Project Manager



Preface

The lead agency for the GEF International Waters Pacific Ridge to Reef (R2R) demonstration project in Palau is the Ministry of Natural Resources, Environment, & Tourism. To implement this project, a Memorandum of Agreement (MOA) was signed between MNRET and The Pacific Community (SPC) on April 1, 2016. Subsequently an extension of the project was granted for September 30, 2020.

A final Project Report is specified in the MOA. This report provides project summary covers period from April 2016 to September 2020. Specifically this report introduces project's data, results and achievements, financial summaries, and implementation progress ratings.



F. Umich Sengebau,
Minister, MNRET

Acronyms

BOT	Bureau of Tourism
BWA	Belau Watershed Alliance
FAO	Food and Agriculture Organization
GEF	Global Environmental Facility
GEM	Geoscience, Energy and Maritime Division
IW	International Waters
IWRM	Integrated Water Resource Management
M&E	Monitoring and Evaluation
MCN	Melekeok Conservation Network
MNRET	Ministry of Natural Resources, Environment, & Tourism
MYCWP	Multi-Year Costed Workplan
NEPC	National Environment Protection Council
NNR	Ngardok Nature Reserve
PAN	Protected Areas Network
PCS	Palau Conservation Society
R2R	Ridge to Reef
RBM	Results Based Management
RPCU	Regional Programme Coordination Unit
SOE	State of the Environment
SPC	The Pacific Community
UNDP	United Nations Development Programme
UNE	United Nations Environment
WFP	Work and Financial Plan



TABLE OF CONTENTS

<i>Preface</i>	2
<i>Acronyms</i>	3
<i>Basic Project Data</i>	5
<i>Executive Summary</i>	6
<i>Introduction</i>	7
Situational Analysis, project issues, needs.....	7
Project Scope, components and anticipated results	7
Project Organization and Management.....	8
Project Stakeholders and Engagement.....	8
<i>Project Results and Achievements</i>	10
<i>Financial Summary</i>	12
SPC-R2R Financial Contribution.....	12
Materialized Co-financing	12
<i>Implementation Progress Ratings</i>	13
<i>Project Contributions to the Regional IW R2R Program Outputs and Outcomes</i>	14
<i>Project contributions to the GEF Focal Areas, SDGs including Special Themes</i>	16
GEF Focal Areas	16
Sustainable Development Goals (SDGs)	17
Special Themes	17
<i>Lessons Learned (Innovations and Catalytic Impacts)</i>	19
Innovative aspects.....	19
Catalytic impacts.....	19
<i>Annexes</i>	19



Basic Project Data

Project Title	Palau R2R IW Project
Project Site/ Location	Airai State / Belau Watershed Alliance member states / Melekeok State
Project Objectives	<p>Strengthening coordination in support of the implementation and national replication of the 5-Year Airai State Watershed Management Plan</p> <p>Strengthening the capacity for participatory monitoring and evaluation (PM&E) to create an enabling environment for effective catchment management in Palau</p> <p>Establishing Public-Private Partnership for Tourism sector investment in IWLCM in Palau</p>

Contract Information	Contract number	MOA: 16/321
	Original Project Duration	April 1, 2016 – December 31, 2019
	Contract Extension (if applicable)	September 30, 2020
	Contracting Party	Ministry of Natural Resources, Environment, & Tourism
	Contracting Party Signatory	MNRET: F. Umiich Sengebau SPC: Samasoni Sauni
	Contract Amount (SPC-R2R)	USD 200,000
	Counterpart (Agency, Department)	USD 75,000
	Counterpart of other partners (e.g. development partners, NGOs, CSO, Academic, etc.)	USD 540,000



Executive Summary

This final report provides a snapshot of the GEF Regional International Waters Ridge to Reef Project funded Palau's National IW R2R demonstration project. Summary of the status and achievements of the project since the signing of the MOA with SPC on April 1, 2016 through September 30, 2020.

The objective of this project is to test the mainstreaming of 'ridge-to-reef' (R2R), climate resilient approaches to integrated land, water, forest and coastal management in the PICs through strategic planning, capacity building and piloted local actions to sustain livelihoods and preserve ecosystem services. Palau's IW R2R national demonstration project envisions to (1) strengthen coordination in support of the implementation and replication of the 5-Year Airai State Watershed Management Plan, (2) strengthen participatory monitoring and evaluation to enable effect catchment management for Palau, and (3) establishing public private partnership for the tourism sector investment in Integrated Water and Coastal Land Management.

Stress reduction measures were not identified for Palau in the Project Document. However Palau's national demonstration project have contributed to this effect via (1) an identified joint ministerial committee for the IW R2R and R2R STAR Project, (2) brokering membership of Airai State into the Belau Watershed Alliance (BWA) through an Airai State formal resolution, (3) review and update of the BWA action plan with a corresponding Results Based Management Workshop to learn how to operationalize the plan, Co-hosting the National Dialogue on Environmental Issues in Palau, (4) a Joint Gender Workshop for IW R2R and STAR Project implementers, (5) preliminary data results of the one year in-situ water quality monitoring with the Melekeok Conservation Network, (6) partnership for developing terrestrial tourism best practices which will be incorporate to the activities of Palau's Bureau of Tourism under the Ministry of Natural Resources, Environment, & Tourism, and (7) three national experts enrolled in post graduate degree course in Ridge to Reef Sustainable Development at James Cook University.

Most project output and outcomes were completed. Planned financial contributions was \$200,000 USD and actual spent was \$194,871 USD.

A lesson captured is project timing and its effect on project design and the resulting need for adaptive management measures. The three year lag between the IWRM and R2R required that the project Logframe be adjusted to account for changes in circumstances, stakeholder re-engagement, and certain project output completed. Through strong partnerships the project was able to deliver project objectives.

An assessment of the overall risk for the project is scaled at Low Risk, probability of up to 25% that assumptions may fail to hold or materialize, and/ or the project may face only modest risks. And overall implementation progress rating for this reporting period is Highly Satisfactory (HS): Implementation of all components is in substantial compliance with the original/formally revised implementation plan for the project. The project can be presented as "good practice". Project outcomes were met by project output deliverables.

Palau's national demonstration worked towards to supporting the achievement International Waters Focal objectives IW1 outcome 1.1, IW3 outcome 3.3, and Biodiversity Focal Objective 1 Improved Management. Further the national demonstration project contributes to SDG 6 Clean Water and Sanitation and SDG 13 Climate Change.



Introduction

Situational Analysis, project issues, needs

The completed GEF Pacific IWRM (PACIWRM) project was a valuable entry point for (1) strengthening integrated approaches to natural resource management in Pacific SIDS and (2) capacity development – fostering application of interdisciplinary skills and local knowledge. Notably the PACIWRM national demonstration projects built local in-country capacity to implement projects, demonstrating cross sector coordination in water management. Building upon investment of previous water projects and the achievements of PACIWRM, an apparent need to scale up PACIWRM results was realized.

An answer to this need was the GEF International Waters funded, GEF Pacific Ridge to Reef Programme. The R2R programme implemented across 13 PICS, aims to test the mainstreaming of ‘ridge-to-reef’ (R2R), climate resilient approaches to integrated land, water, forest and coastal management in the PICs through strategic planning, capacity building and piloted local actions to sustain livelihoods and preserve ecosystem services. . The programme follows the GEF Programmatic Approach, gaining synergy across the GEF Focal Areas and Implementing Agency. This approach allows for coordination and linkages between in country IW R2R and STAR projects through capacity building and knowledge sharing.

This programme embraces the ‘doing is seeing the need’ philosophy adopted by the IWRM project through the promotion of pilot or national demonstration projects. On April 1, 2016 Palau’s Ministry of Natural Resources, Environment, & Tourism (MNRET) signed a Memorandum of Agreement with the Pacific Community (SPC) to implement the project. Palau’s IW R2R national demonstration project envisioned to (1) strengthen coordination in support of the implementation and replication of the 5-Year Airai State Watershed Management Plan, (2) strengthen participatory monitoring and evaluation to enable effect catchment management for Palau, and (3) establishing public private partnership for the tourism sector investment in Integrated Water and Coastal Land Management.

Project timing and its effect on project design and the resulting need for adaptive management measures. The three year lag between the IWRM and R2R required that the project Logframe be adjusted to account for changes in circumstances, stakeholder re-engagement, and certain project outputs completed.

Project Scope, components and anticipated results

National demonstration projects are designed to strengthen R2R integration by establishing synergies among the work of various sector agencies and the GEF R2R STAR projects, between governments, communities, and civil society and the private sector. Palau’s demonstration project are presented in the table below.

Key Components	Expected Outputs	Anticipated Outcomes
1. Strengthening coordination in support of the implementation and national replication of the 5-Year Airai State Watershed Management Plan	Status on the implementation and stakeholder involvement of the 5-Year Airai State Watershed Management Catchment management planning process replicated through the update of the Belau Watershed Alliance Action Plan	Sustained local coordination and participation in implementation activities for the Airai State Watershed Management Plan
2. Strengthening the capacity for participatory monitoring and evaluation (PM&E) to create an enabling environment for effective catchment management in Palau	PM&E focused on water quality MCN staff capacitated in operationalizing PM&E focused on water quality monitoring Water quality monitoring operationalized	Improved data collection for the development of national catchment plans via PM&E
3. Establishing Public-Private Partnership for Tourism	Partnership to develop terrestrial tourism guidelines	Cross-sectoral coordination established to explore the

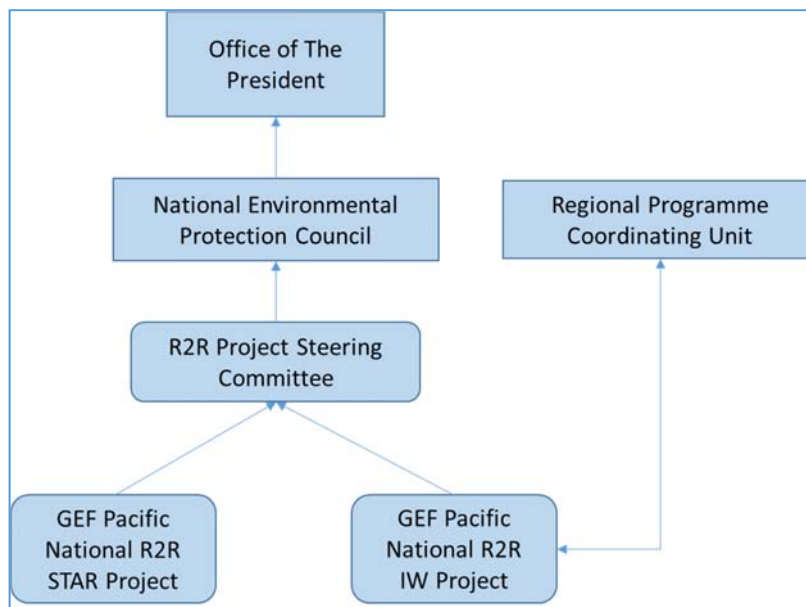


sector investment in IWLCM in Palau		feasibility of public-private partnerships for tourism sector investment in IWLCM in Palau
-------------------------------------	--	--

Project Organization and Management

MNRET is the National Implementing Partner for this project. The vision of MNRET is “To be widely recognized in promoting, exploring, exploiting, developing, protecting, and managing the natural resources of the Republic, in areas of marine and fisheries, agriculture, aquaculture, forests, mineral and other land-based and ocean-based resources as well as tourism.” MNRET oversees multiple natural resource management bureaus and offices including the Bureau of Agriculture, Bureau of Marine Resources, Bureau of Tourism, and the Protected Areas Network Office. Both R2R Star and IW R2R project are housed at MNRET.

A Joint Steering Committee was established for the GEF Pacific National R2R STAR project and the IW R2R national demonstration project. The Chairman for the JSC is the Minister of MNRET, whom is also the chairman for Palau’s National Environment Protection Council. Project steering committee held its first meeting in February 2019. Annex 2 provides JSC Terms of Reference and membership details.



Project Stakeholders and Engagement

The 1st Project Steering Committee and Regional Inception Workshop was held in Nadi, Fiji, on October 2016. In this workshop project managers were presented the GEF Ridge to Reef Stakeholder Engagement Strategy and its accompanying GEF Pacific R2R Engagement Analysis Toolkit Analysis Toolkit. Per stakeholder engagement strategy, analysis of stakeholder roles and their potential support for the project was conducted utilizing a methodology designed by the International Association for Public Participation (IAP2).

Utilizing mentioned strategy and toolkit stakeholders for Palau’s national demonstration project is presented below.

Stakeholder	Role
Airai State Government	Resource owner of Pilot Site – involvement in project strengthening coordination for the 5-Year Airai State Watershed Management Plan
Belau Watershed Alliance	Organization comprised of representatives from



	government organizations, NGOs, and the private sector with the mission of improving watershed Management throughout Palau. Currently 10 member States. Replicate Watershed management planning process and application for grant.
Bureau of Tourism (MNRET)	Oversees Tourism in Palau – Component 3 work with looking into PPP into Tourism Sector
GEF Small Grants Programme – Palau Office	Partner with IW R2R Programme. Provide financial support to NGO and CBO's.
Melekeok State Government	Resource owner of Pilot Site – Component 2 participatory monitoring and (PM&E) for water quality monitoring.
Melekeok Conservation Network	Charged with protecting Melekeok Protected Areas in addition to implementing management plan. Carry out Component 2 PM&E.
Ministry of Natural Resources, Environment, & Tourism	Oversees multiple natural resource management bureaus, houses GEF IW R2R national demonstration project
Palau Conservation Society	PCS is a natural resource conservation organization. 2 staff from PCS are enrolled in the post graduate program course with JCU.
Protected Areas Network	The PAN Office oversees management of the Protected Areas throughout Palau

The IAP2 Model of Stakeholder Engagement portrays engagement levels from Inform, moving to Consult, Involve, Collaborate, and Empower. For the reporting period engagement strategies have been mostly at the Inform, Consult, and/or Involve level. Methods of engagement level widely used for the demonstration project include face to face meetings, public meetings, focus groups, and facilitated events, presentations, and printed publications. Engagement strategies have been useful in targeting the type of goal which to achieve from an engagement activity.

To mainstream gender issues in stakeholder engagements, a Gender Action Plan was developed for the project. Palau's cultural and social environment promotes social inclusion, in addition to a Gender Policy that was endorsed by the Government on April 2018. To capture sex disaggregated data, all meeting sign-in sheet were modified to provide a section on Gender.

A joint IW R2R and STAR Gender workshop was held in Palau on May 17, 2018. A gender consultant commissioned by RPCU/SPC was brought in to facilitate the workshop. During workshop, the RPCU/SPC consultant had to change the setting of the workshop to more of roundtable discussions as most implementing stakeholder have had gender training. A request from the participants of the workshop was that Palau's Gender Office hold the training and keep a list of all participants that have undergone training, to avoid duplication.



Project Results and Achievements

The results can best be presented following the results logic.

Component/ Outcomes/ Outputs	Indicate the appropriate name of the component, the desired outputs and activities	Indicate the Status of implementation (choose from the following:
---	---	--

Component 1	Strengthening coordination in support of the implementation and national replication of the 5-Year Airai State Watershed Management Plan	
Outcome 1.1	Sustained local coordination and participation in implementation activities for the Airai State Watershed Management Plan	Completed
Output 1.1.1	Review 5-Year Airai State Watershed Management Plan Development of an Airai State specific watershed brochure	Completed
Output 1.1.2	Communicate the results of the review on the Airai State WMP to stakeholders	Not completed. Multiple efforts were made to stakeholder but no positive response in scheduling meeting or final sit down.

Component 1	Strengthening coordination in support of the implementation and national replication of the 5-Year Airai State Watershed Management Plan	
Outcome 1.2	Strengthened national replication of catchment management planning model and community participation in Airai State Management Plan implementation	Completed
Output 1.2.1	Catchment management planning process replicated through the update of the Belau Watershed Alliance Action Plan	Completed
Output 1.2.2	Technical support in updating Belau Watershed Action Plan provided	Completed
Output 1.2.3	Provide support in mobilizing funding sources for financing the implementation of activities in the action plan	Completed

Component 1	Strengthening coordination in support of the implementation and national replication of the 5-Year Airai State Watershed Management Plan	
Outcome 1.3	Improved inter-agency partnership in sustainable coastal area monitoring	Completed



Output 1.3.1	Memoranda of Agreement for improved inter-agency partnership for sustainable coastal monitoring forged	Completed
--------------	--	-----------

Component 2	Strengthening the capacity for participatory monitoring and evaluation (PM&E) to create an enabling environment for effective catchment management in Palau	
Outcome 2.1	Improved data collection for the development of national catchment plans via PM&E focused on water quality in a Belau Watershed Alliance State	Completed
Output 2.1.1	PM&E focused water quality report	Completed

Component 2	Strengthening the capacity for participatory monitoring and evaluation (PM&E) to create an enabling environment for effective catchment management in Palau	
Outcome 2.2	Increased local community and agency capacity for water quality monitoring in a BWA member catchment site	Completed
Output 2.2.1	MCN staff capacitated in operationalizing PM&E focused on water quality monitoring	Completed
Output 2.2.2	Water quality monitoring operationalized	Completed

Component 2	Strengthening the capacity for participatory monitoring and evaluation (PM&E) to create an enabling environment for effective catchment management in Palau	
Outcome 2.3	Endorsed PM&E Plan focused on water quality for catchment management to revitalize the Protected Areas Network and sustainable land management in Palau	Completed
Output 2.3.1	PM&E focused on water quality incorporated into MCN activities	Completed
Output 2.3.1	Endorsement from MNRET Minister and PAN Coordinator	Completed

Component 3	Establishing Public-Private Partnership for Tourism sector investment in IWLCM in Palau	
Outcome 3.1	Cross-sectoral coordination established to explore the feasibility of public-private partnerships for tourism sector investment in IWLCM in Palau	Completed



Output 3.1.1	National Environment Investment Board established	Completed (established in 2016 through the creation of the Bureau of Tourism)
Output 3.1.2	Review of the PRTPF is technically supported	Completed

Component 3	Establishing Public-Private Partnership for Tourism sector investment in IWLCM in Palau	
Outcome 3.2	Nationally endorsed guidelines for Public-Private partnerships for the tourism sector in IWLCM	Completed
Output 3.2.1	National PPP Guidelines in tourism sector for terrestrial tourism	Completed

Component 3	Establishing Public-Private Partnership for Tourism sector investment in IWLCM in Palau	
Outcome 3.3	Public-Private partnerships for tourism sector investment in IWLCM established for enhanced environmental protection in Palau	Completed
Output 3.3.1	Investment PPP opportunities identified and Partnership forged	Completed

Financial Summary

SPC-R2R Financial Contribution

Amount	Total Amount Spent	Utilization Rate ¹ (in Percentage)
\$ 200,000 USD	\$ 194,871 USD	97%

Materialized Co-financing

In-kind co-financing to the project was \$1,110,000 USD in 2014. Co-financing realized from project are highlighted in the table below.

Name of Co-financer	Type of Co-financing ²	Amount ³ (USD)
Ministry of Natural Resources, Environment, & Tourism	In-Kind	\$75,000.00

¹ Amount spent divided by amount budgeted/planned multiply by 100.

² Grant or In-kind

³ Total cash and monetized in-kind contributions.

Protected Areas Network	In-Kind	\$200,000.00
US Department of Interior Palau Tourism Master Plan Grant	In-kind	\$100,000.00
Environment Quality Protection Board	In-Kind	\$5,000.00
Palau Automated Land and Resources Information Systems	In-Kind	\$2,000.00
Palau International Coral Reef Center	In-Kind	\$5,000.00
Airai State Government	In-Kind	\$20,000.00
Melekeok State Government	In-Kind	\$130,000.00
Belau Watershed Alliance	In-kind	\$50,000.00
PREL – Water Quality Management Teams Project	In-Kind	\$10,000.00
Palau Conservation Society	In-Kind	\$10,000.00
Ebiil Society	In-Kind	\$5,000.00
United States Natural Resource Conservation Service	In-Kind	\$5,000.00

Implementation Progress Ratings

A brief and concise assessment of the results and achievements of the project from the perspective of the recipient. The assessment should endeavour to respond to the following assessment areas:

1. **Inputs:** To what extent have the planned inputs been supplied?
 - At most, funds have been sufficiently delivered, however, not timely delivered.
2. **Outputs:** To what extent have the planned outputs been produced?
 - To a certain extent, planned outputs have been satisfactory. However timing has been an issue.
3. **Objectives:** To what extent have the outputs contributed to achieving the project objectives?
 - Outputs have delivered on project objectives. Project logframes outcomes and outputs had to be re-visited.
4. **Sustainability** of the project results: To what extent will the intended results of the activity be sustainable?
 - In-situ water quality monitoring integrated to MCN activities
 - Green Boots Terrestrial Tourism Guidelines integrated to BOT activities



5. **Risks/Assumptions/Conditions:** To what extent were the previously identified conditions, assumptions and accompanying risks addressed?

Context	Specify the identified Conditions, Assumptions and Risks	Provide your assessment in this column
Conditions	Continued Government and Community Participation	Government and community participation still present.
Assumptions	Sufficient resources to maintain implementation of watershed management plan and local level participation	Project had to adapt to changes in national and subnational circumstance to deliver project outcomes.
Risks	Capacity limits of implementers	For the most part, expertise can be found in other agencies.

An assessment of the overall risk for the project is scaled at Low Risk, probability of up to 25% that assumptions may fail to hold or materialize, and/ or the project may face only modest risks.

6. Overall Implementation Progress Rating

Overall Implementation progress rating for this reporting period is Highly Satisfactory (HS): Implementation of all components is in substantial compliance with the original/formally revised implementation plan for the project. The project can be presented as “good practice”. Project outcomes were met by project output deliverables.

Project Contributions to the Regional IW R2R Program Outputs and Outcomes

This Chapter provides snapshots of the national project contributions to the Regional Ridge to Reef program components such as:

1. National demonstration to support R2R ICM/IWRM approaches for island resilience and sustainability. Specifically an account of the status of:
 - 1.1 Successful pilot projects testing innovative solutions involving ICM, IWRM and CCA (linked to the STAR via larger Pacific R2R network).

Although Stress Reduction benefits were not identified for Palau in Project Document, Palau National Demonstration project have contributed via:

- The project has supported the review and update of the Belau Watershed Alliance Action Plan. This action plan encompasses all the watersheds in Palau. Furthermore the project partnered with local agencies to deliver a BWA action plan focused Results Based Management workshop.
- The project trained two MCN staff to conduct in-situ water quality monitoring. MCN has decided to carry out the monitoring after project completion, furthermore MCN has partnered with local agencies to scale up monitoring through sedimentation and hydrological studies.



- Water Quality monitoring report will be annexed to the update of the MCN management plan.
- Green Boots – Terrestrial tourism best practice guidelines developed and integrated to the Palau’s Bureau of Tourism activities.

1.2 National Diagnostic analysis for ICM conducted for prioritizing and scaling-up key ICM/IWRM reforms and investments.

A draft IDA report for Palau is available. However, Palau published its State of the Environment (SOE) in 2017 with a subsequent update in 2019. IDA process has similarities with Palau’s SOE’s process thus to avoid redundancy IDA was not continued. The updated 2019 Palau SOE has mentions of the R2R Water Quality Monitoring work conducted with MCN.

1.3 Multi-stakeholder leader roundtable networks established for strengthened ‘community to cabinet’ ICM/IWRM.

- The project through the Belau Watershed Alliance partnered with various agencies to host the National Dialogue on Environment Issues in Palau on May 10, 2018. Participants included over 80 participants ranging from the National Government, State Government, and the local community.
- The project brokered partnership for the Airai State to join the Belau Watershed Alliance through an Airai State formal Resolution.

2. Island-based investments in human capital and knowledge to strengthen national and local capacities for R2R ICM/IWRM approaches, incorporating climate change adaptation

2.1 National and local capacity for ICM and IWRM implementation build to enable best practice in integrating land, water, forest and coastal management and climate change adaptation.

- 3 national experts completed a Post Graduate Certificate R2R at James Cook University
- 1 national expert enrolled in Post Graduate R2R Diploma Management Stream at James Cook University/
- 2 national experts enrolled in Post Graduate R2R Diploma Technical Stream at James Cook University

2.2 Incentive structures for retention of local R2R expertise and inter-governmental dialogue on human resource needs for ICM/IWRM initiated.

- 2 Melekeok Conservation Network Staff, all female, trained in in-situ water quality monitoring
- 28 Members of the BWA, 16 females and 12 males, attended a RBM workshop which purpose was to learn how to operationalize their updated action plan.

3. Mainstreaming of R2R ICM/IWRM approaches into national development planning

3.1 National and regional strategic action frameworks for ICM/IWRM endorsed nationally and regionally

- The National Environment Protection Council (NEPC) was established was established in 2002 via Presidential Executive Order 205. NEPC is a multi-agency body with members from government, semi-government, non-government organizations, and the private sector. Its mandate is to “identify, prioritize, and manage national environment issues within the context of sustainable development through the integration of these identified priorities into national planning processes. The NEPC is the default IMC for the project.
- The NEPC is also the national steering committee for international environment and sustainable development initiatives within the Republic”. The chairman for the NEPC is the Minister for MNRET. The NEPC published State of Environment Reports (SOE) for Palau in 2016 and 2019.
- The Palau Conservation Consortium is an informal group of conservation practitioners, business owners, and concerned citizens. NEPC and Palau Conservation Consortium co-hosted Palau’s



National Environment Symposium in 2016, 2018, and 2020. Water quality monitoring work conducted by the project was mentioned in Palau's 2019 SOE.

- BOT, other Government agencies, non-Government, and private partners formally endorsed the Green Boots guidelines. Guidelines are used by BOT inform the development of terrestrial tourism product development and implementation.

3.2 Coordinate approaches for R2R integrated land, water, forests and coastal management and climate change adaption

- A Joint Project Steering Committee for both the IW R2R and R2R STAR project. The chairman for the project steering committee is the Minister for MNRET whom is also the chairman for Palau's National Environment Protection Council. Members of the Committee also have representation in the NEPC.
- Benefits of leveraging existing social capital allows the Joint Project Steering Committee to ensure cross-sector coordination, efficient use of institutional resources, as well as allowing stakeholders to understand the connections of different projects.

Project contributions to the GEF Focal Areas, SDGs including Special Themes

GEF Focal Areas

1. International Waters

- Through the project partnerships and Airai State resolution to join the Belau Watershed Alliance thus strengthening watershed protection, Palau's national demonstration project supports the achievement of International Waters Focal Objective IW1 outcome 1.1 incorporation of national policy reform on IWRM into national/local plans and action.
- The National Dialogue on Palau's Environment issues promoted multi-stakeholder discussions enabling the support for International Waters Focal Objective IW3 outcome 3.3 IW portfolio capacity and performance enhance from active learning/KM/experience sharing.

2. Biodiversity Conservation

- The project's one-year water quality monitoring with MCN contributes to Biodiversity focal Objective 1 Improved Management. Water Quality monitoring was conducted at areas inside and outside the Ngardok Nature Reserve (NNR). NNR is a watershed that encompasses Lake Ngardok and section of the Ngerdorech River. Features of the watershed include volcanic forests, freshwater swamps / forest, marshes, streams, and Lake Ngardok – the largest permanent natural freshwater lake in Micronesia. MCN has established terrestrial monitoring program and scientific partnerships. Prior to the project, water quality monitoring was a lacking activity in MCN management plan. In November 2019, MCN announced that they will continue the water quality monitoring work as set up by the project in addition to annexing the water quality report in the update of their management plan.



Sustainable Development Goals (SDGs)

Below is the summary of the project contributions to the relevant Sustainable Development Goals.

SDG	Project contributions
SDG 1 – No poverty	
SDG 2 – Zero hunger	
SDG 3 – Good health and well-being	
SDG 4 – Quality education	
SDG 5 – Gender equality	5.B Enhance the use of enabling technology, in particular information and communications technology, to promote the empowerment of women
SDG 6 – Clean water and sanitation	6.5.1 Degree of integrated water resources management implementation
SDG 12 – Responsible production and consumption	
SDG 13 – Climate change	13.2.1 Number of countries that have communicated the establishment or operationalization of an integrated policy/strategy/plan which increases their ability to adapt to the adverse impacts of climate change, and foster climate resilience and low greenhouse gas emissions development in a manner that does not threaten food production (including a national adaptation plan, nationally determined contribution, national communication, biennial update report or other)
SDG 14 – Life below water	14.7 By 2030, increase the economic benefits to Small Island developing States and least developed countries from the sustainable use of marine resources, including through sustainable management of fisheries, aquaculture and tourism
SDG 15 – Life on land	15.1 By 2020, ensure the conservation, restoration and sustainable use of terrestrial and inland freshwater ecosystems and their services, in particular forests, wetlands, mountains and drylands, in line with obligations under international agreements. 15.2 By 2020, promote the implementation of sustainable management of all types of forests, halt deforestation, restore degraded forests and substantially increase afforestation and reforestation globally. 15.5 Take urgent and significant action to reduce the degradation of natural habitats, halt the loss of biodiversity and, by 2020, protect and prevent the extinction of threatened species
SDG 17 – Partnerships for the goals	7.1.7 Encourage and promote effective public, public-private and civil society partnerships, building on the experience and resourcing strategies of partnership.

Special Themes

1. Gender Mainstreaming

The project is fortunate enough where implementation has observed almost equal representation of men and women. Community activities conducted have not been specifically geared toward a certain gender or age group, however activities promote social inclusion. Outreach events requested by schools to the project however, have been geared toward grade level comprehension. The table in the following page summarizes project activities and participation.



Date	Training / Workshops / Meetings	Number of Participants	Gender
03/17/2017	BWA Lead Representatives and Technical Committee Meeting	24	Female: 10 Male: 14
04/21/2017	Earth Day – Water Day: Forming Water Quality Management Teams	35	Female: 21 Male: 14
7/09/2017	GEF 5 Forestry Validation Workshop	11	Female: 6 Male: 5
07/25/2017	BWA Quarterly Meeting	11	Female: 8 Male: 3
01/15/2017	BWA Meeting with Airai State Legislators	10	Female: 3 Male: 7
1/16/2018	BWA Meeting Airai State Community	27	Female: 15 Male: 12
03/01/2018	GEF5 Expanded Project Steering Committee Meeting	42	Female: 19 Male: 23
03/13/2018	Airai Elementary School Education Outreach	100 + students	-----
03/20/2018	GEF R2R IW / BWA meet with Palau's Governors' Association	19	Female: 7 Male: 12
04/14/2018	Tree Planting Activity and Watershed Model Demonstration with Palau High School Students	23	Female: 15 Male: 8
05/10/2018	National Dialogue on Environmental Issues in Palau	85	Female: 48 Male: 37
05/17/2018	Pacific R2R Gender Mainstreaming Workshop	28	Female: 23 Male: 5
05/22/2018	MCN Water Quality Meeting	6	Female: 4 Male: 2
06/06/2018	MCN Water Quality Proposed Sampling Site Visits	4	Female: 3 Male: 1
06/12/2018	Watershed Activity with Ebiil Society Camp	30+ students	---
06/21/2018	BWA Quarterly Meeting	15	Female: 7 Male: 8
07/04/2018	MCN Water Quality Class	5	Female: 4 Male: 1
07/11/2018	R2R IW / BWA Water and Cave Lecture with Ebiil Society Camp	30+ students	-----
07/12/2018	Flag and GPS Water Quality Sites	4	Female: 4 Male: 0
07/12/2018	BWA PM&E Meeting	12	Female: 6 Male: 6
08/16/2018	Meeting with Bureau of Tourism on Development of Green Boots	6	Female: 3 Male: 3
08/17/2018	R2R IW Presentation at SIDS CBA Pacific Regional Workshop	---	---
12/11/2018	BWA Action Plan Launch	48	Female: 25 Male: 23
12/12/2018	Bureau of Tourism Strategic Development	13	Female: 7 Male: 6
1/09/2019	PICRC 18 th Anniversary Education Carnival	201 students	----
2/26/2019	BWA Quarterly Meeting	20	Female: 11 Male: 9
04/30/2019	Result Based Management Training for Belau Watershed Alliance	28	Female: 16 Male: 12
06/19/2020	Water Class with Ebiil Society Summer Camp	30+ students	---
10/22/2019	MCN Water Quality Monitoring Data Class	3	Female: 3 Male: 0
11/05/2020	Results Based Management Coaches Training Workshop	26	Female: 18 Male: 8
11/14/2020	Hand-over Water Quality Equipment to MCN	13	Female: 6 Male: 7

Lessons Learned (Innovations and Catalytic Impacts)

Innovative aspects

The implementation of the IW R2R with STAR project benefits from having both projects housed under Ministry of Natural Resources, Environment, & Tourism. The setup of both projects as described in the project's MOA allows for coordination and communication. Examples include a Joint Gender Workshop, water quality monitoring in a STAR project site, and extension of BWA RBM workshop to STAR stakeholders.

The project has realized the importance of stakeholder engagement and engaging the right partners. The three year gap with the IWRM and IW R2R project created a lull among existing stakeholders. Bulk of the consultations within the first year between partners included re-engagement to the project and discussions of project benefits. Having the right messenger who knows the right language to approach groups was a valuable lesson learned and an entry point for the project to the community.

Although representation of the IW R2R project in education and outreach events is not mentioned in the results framework for Palau. The IW R2R partnered with existing organizations for education and outreach events. These events facilitated an audience of the project outside stakeholder list and publicity for the project.

Catalytic impacts

Project delay, changing administrations, and completed outputs were complications experienced during project implementation. The lesson learned in the Palau's national demonstration project was that Adaptive Management is a necessity when national circumstances change to the degree that it complicates project design and implementation (see Annex 5 – detailed lessons learned document). Productive partnerships and stakeholder involvements was key in ensuring project revisions would meet desired outcomes. These partnerships resulted in Palau's first National Dialogue on Environment Issues as well as a series of RBM workshops catered to effective catchment management.

MCN employs 8 staff (5 males and 3 females). Prior to monitoring, female staff deferred technical work aspects to male staff. The year-long water quality monitoring conducted at MCN was a catalyst for empowering two female staff to build their capacities in water monitoring. In 2020, one of the female staff was promoted to head conservation officer partially owing to the additional skills learned from the monitoring activities.

Annexes

Annexes	Title of the document
Annex 1	Palau Project Logframme
Annex 2	Joint Project Steering Committee and Highlights of Meetings
Annex 3	Gender Action Plan
Annex 4	Trainings Summary
Annex 5	Palau Lessons Learned Document
Annex 6	Reports/Publications

