



Launching and handover of R2R products and publications to Pacific Island Countries

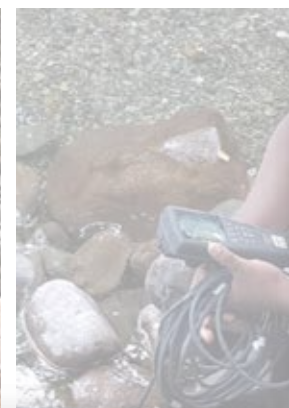




Melekeok Conservation Network
in Situ Water Quality Monitoring Report
Palau

Pacific Community
Communauté du Pacifique

Logos: UN, GEF, UNEP, UN Women, UNFPA, UNICEF, UNDP, UNHCR, UNWFP, UNWOMEN, UNICEF, UNFPA, UNDP, UNHCR, UNWFP, UNWOMEN



Technical Report:
Water Quality
Assessment of
Fongafale Lagoon,
Funafuti, Tuvalu

Pacific Community
Communauté du Pacifique

Logos: UN, GEF, UNEP, UN Women, UNFPA, UNICEF, UNDP, UNHCR, UNWFP, UNWOMEN, UNICEF, UNFPA, UNDP, UNHCR, UNWFP, UNWOMEN

AN ASSESSMENT OF
WATER QUALITY AND BIODIVERSITY
OF THE MATANIKO CATCHMENT, SOLOMON ISLANDS

Pacific Community
Communauté du Pacifique

Logos: UN, GEF, UNEP, UN Women, UNFPA, UNICEF, UNDP, UNHCR, UNWFP, UNWOMEN, UNICEF, UNFPA, UNDP, UNHCR, UNWFP, UNWOMEN



KIRIBATI INTERNATIONAL WATERS
RIDGE TO REEF PROJECT

BONRIKI & BUOTA WATER RESERVES
WATER QUALITY SAMPLING/ MONITORING DATA
APRIL 2020 - JULY 2021

Pacific Community
Communauté du Pacifique

Logos: UN, GEF, UNEP, UN Women, UNFPA, UNICEF, UNDP, UNHCR, UNWFP, UNWOMEN, UNICEF, UNFPA, UNDP, UNHCR, UNWFP, UNWOMEN

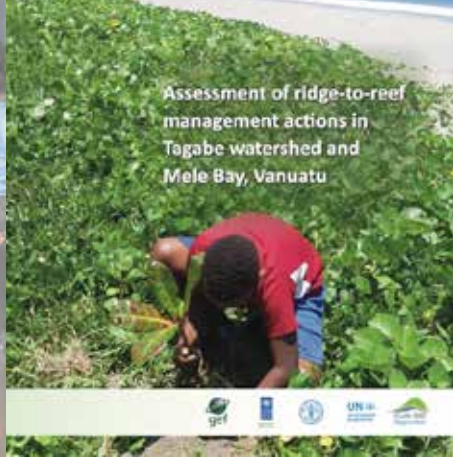
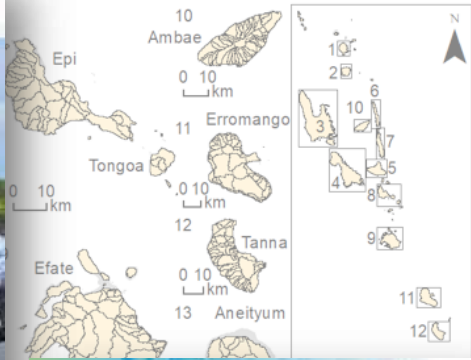




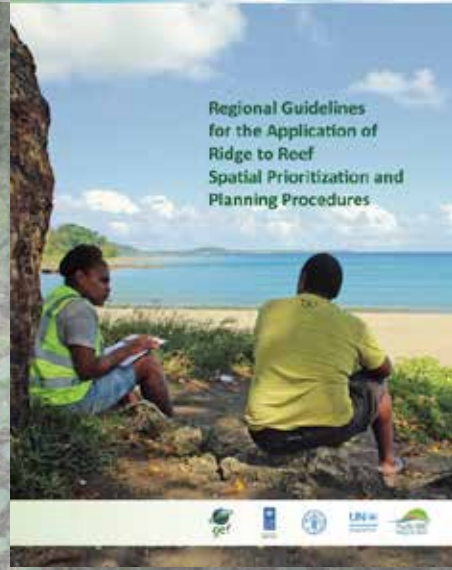
Identification of priority sites
for future upscaling of
Ridge to Reef investments in Vanuatu



Regional Guidelines for Implementing the (modified) R2R Science to Policy Strategic Framework



Assessment of ridge-to-reef
management actions in
Tagabe watershed and
Mele Bay, Vanuatu



Regional Guidelines
for the Application of
Ridge to Reef
Spatial Prioritization and
Planning Procedures

Rapid Assessment of Priority Coastal Area and Lagoon
of Mial Catchment, Rarotonga, Cook Islands



Fagali'i Catchment Biorap Survey Report:
Rapid Assessment of Priority Coastal Areas
for Fagali'i, Samoa



Rapid Coastal
Assessment (RapCA)
in the Hihifo District,
Tongatapu

Rapid Coastal
Assessment of Tagabe
River Catchment Report,
Port Vila, Vanuatu



Federated States of Micronesia (FSM)
International Waters Ridge to Reef Project

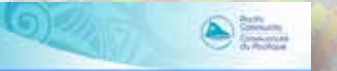
Tofol Watershed Catchment
Geological Assessment from Ridge to Reef,
Kosrae State, FSM



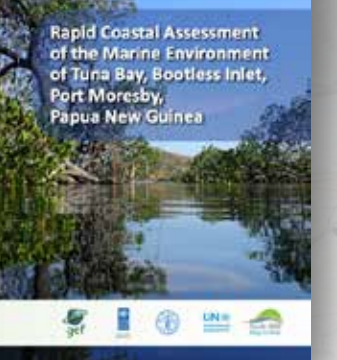
**Rapid Assessment of
Priority Coastal Areas (RapCA)**
in the Hihifo District, Tongatapu

**Social and Economic
Survey Report**

**Tonga International Waters
Ridge to Reef Project**

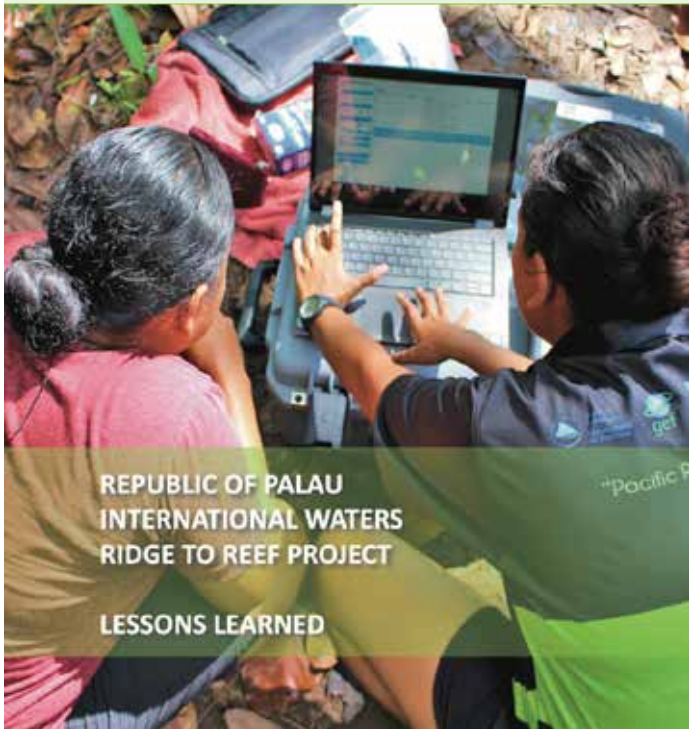


**Rapid Coastal Assessment
of the Marine Environment
of Tuna Bay, Bootless Inlet,
Port Moresby,
Papua New Guinea**



**Rapid Coastal Assessment
of Mataniko River
Catchment Report, Honiara,
Guadalcanal Island,
Solomon Islands**





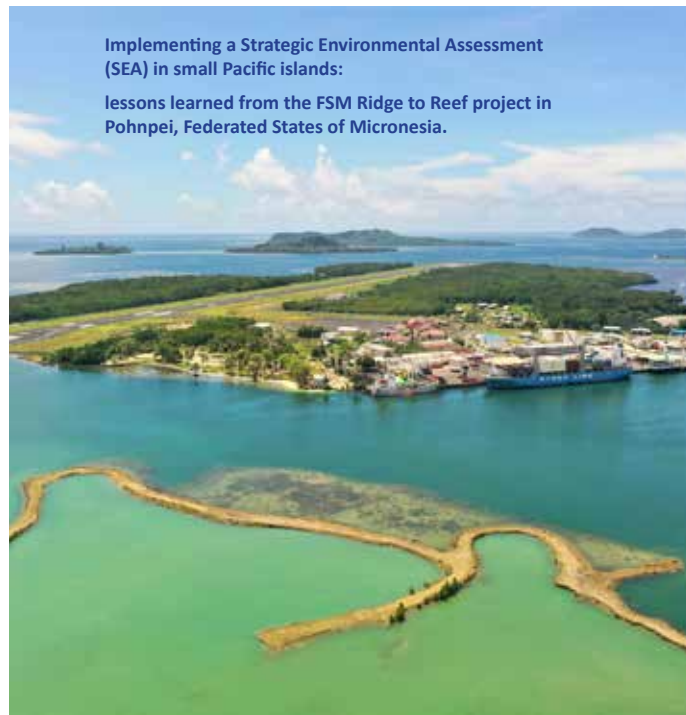
REPUBLIC OF PALAU
INTERNATIONAL WATERS
RIDGE TO REEF PROJECT

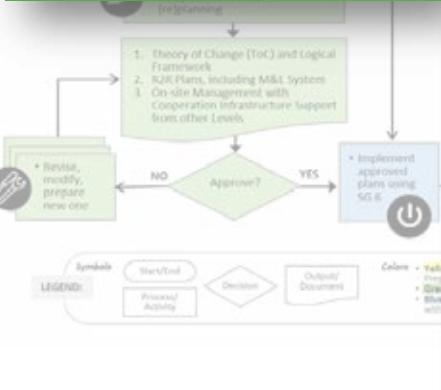
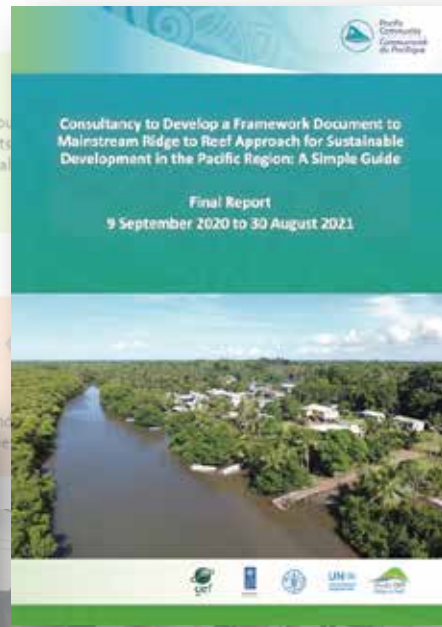
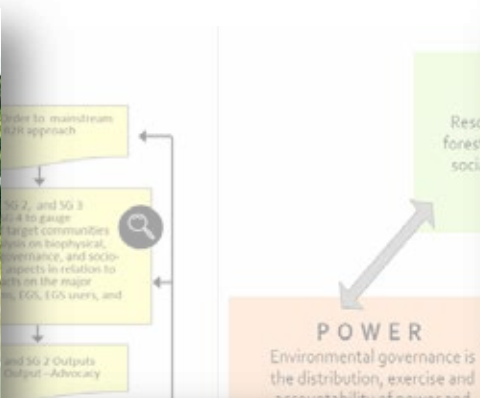
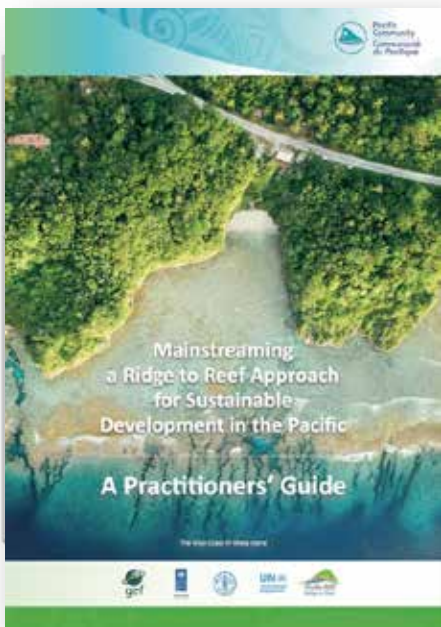
LESSONS LEARNED



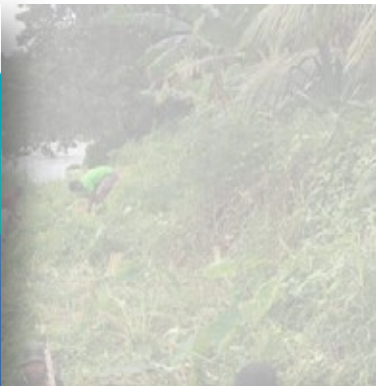
Implementing a Strategic Environmental Assessment (SEA) in small Pacific islands:

lessons learned from the FSM Ridge to Reef project in Pohnpei, Federated States of Micronesia.

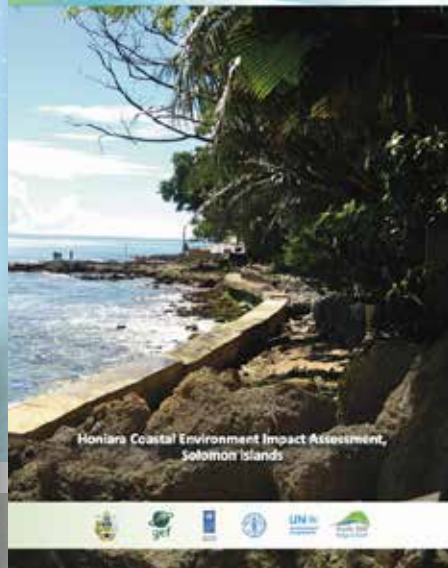




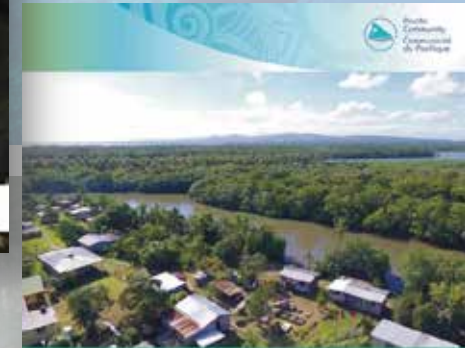
Honiara Coastal and Marine Assessment Report, Solomon Islands



Honiara Coastal Environment Baseline Assessment Technical Report



Honiara Coastal Environment Impact Assessment, Solomon Islands



Ecosystem Goods Services – using Freshwater Health Index for Waimanu Catchment

November 2021

Solomon Islands International
Waters Ridge to Reef Project
Honiara Coastline Baseline Study
Bathymetry and Hydrology Assessment Report



ED AREA



Mataniko Catchment
Integrated Watershed Management Plan



CONSERVATION AND ENVIRONMENT
PROTECTION AUTHORITY
PNG International Waters Ridge To Reef Project
Tuna Bay Mangrove Management Plan
2021-2023



Waimanu River Catchment
Integrated Management Plan

Fiji

December 2021



OFAGA HE PULOTU – Tumukifonua ke he Uluulu Tuapa-Uhomotu Marine Learning Centre



To strengthen conservation and sustainable use of land, water and marine areas and their biodiversity by building on their cultural heritage values through integrated national and community actions



What is the Pacific R2R Programme?

The Pacific Ridge to Reef (R2R) Programme is a multi-country, multi-GEF agency programmatic initiative guiding the coordinated investment of US\$90 million in GEF grant funding across multiple focal areas of biodiversity conservation, land degradation, climate change adaptation and mitigation, sustainable land management, sustainable forest management, and international waters in Pacific Small Island Developing States (SIDS).

Operating across 14 Pacific Island countries, the programme aims to deliver tangible and quantifiable local and global environmental benefits by focusing on cross-cutting approaches to water, land, and coastal management with linkages across GEF focal areas including: biodiversity, land degradation, international waters, sustainable forest management, climate mitigation and adaptation and capacity development.

The programme is implemented by United Nations Development Programme (UNDP), the United Nations Food and Agriculture Organization (FAO) and the United Nations Environment Programme (UNEP).

Executed regionally by the Pacific Community through the Pacific Regional Ridge to Reef International Waters project (Pacific Regional R2R IW), the R2R Programme is supported by the Regional Programme Coordination Unit (PCU) in areas of science-based planning, human capital development, policy and strategic planning, results-based management, and knowledge sharing.

Pacific R2R participating countries include: Cook Islands, Federated States of Micronesia, Fiji, Kiribati, Nauru, Niue, Palau, Papua New Guinea, Republic of the Marshall Islands, Samoa, Solomon Islands, Tonga, Tuvalu, and Vanuatu.





What is the Pacific R2R Programme?

The Pacific Ridge to Reef (R2R) Programme is a multi-country, multi-GEF agency programmatic initiative guiding the coordinated investment of US\$90 million in GEF grant funding across multiple focal areas of biodiversity conservation, land degradation, climate change adaptation and mitigation, sustainable land management, sustainable forest management, and international waters in Pacific Small Island Developing States (SIDS).

Operating across 14 Pacific Island countries, the programme aims to deliver tangible and quantifiable local and global environmental benefits by focusing on cross-cutting approaches to water, land and coastal management with linkages across GEF focal areas including: biodiversity, land degradation, international waters, sustainable forest management, climate mitigation and adaptation and capacity development.

The programme is implemented by United Nations Development Programme (UNDP), the United Nations Food and Agriculture Organization (FAO) and the United Nations Environment Programme (UNEP).

Executed regionally by the Pacific Community through the Pacific Regional Ridge to Reef International Waters project (Pacific Regional R2R IW), the R2R Programme is supported by the Regional Programme Coordination Unit (RPCU) in areas of science-based planning, human capital development, policy and strategic planning, results-based management, and knowledge sharing.

Pacific R2R participating countries include: Cook Islands, Federated States of Micronesia, Fiji, Kiribati, Nauru, Niue, Palau, Papua New Guinea, Republic of the Marshall Islands, Samoa, Solomon Islands, Tonga, Tuvalu and Vanuatu.





GEF Pacific International Waters Ridge to Reef Project








"Tokangaekina 'o e Toka'anga Val' mo e Matāahi', ke Fakaliva 'a hono Malu' mo e Fakas'isi'i 'o e Fakatamaki', 'i Tonga"

NGAAHI LELEI:

1. Fakas'isi'i 'o e Ha'aha'a e Veve Fakakolo.
2. Felu'u Ano Fakatolonga/ Malu'i.



"Integrating Watershed and Coastal Area Management for Strengthened Water Protection and Coastal Hazard Reduction in Tonga"

BENEFITS:

1. Municipal Waste Pollution Reduction.
2. Conserved/Protected Wetlands.

NATURAL RESOURCES DIVISION
MINISTRY OF LANDS & NATURAL RESOURCES
Phone: 2508 or 2288, P.O. Box 5, Corner of Vahakolo and
Bygone Road, Nukunono, Nuku'alofa, TONGA







KEEP SAWANI LITTER FREE



Call Hotline: 1520

Phone: (679) 331 1699

Email: info6@govnet.gov.fj



**Dumping of any form of litter is strictly prohibited.
Offenders will be prosecuted.**



Kiribati Portable Dry Litter Pigpen



Benefits of DL piggery

- Produce organic compost for home gardening
- Pig will naturally turn organic dry litter mixed with pigs' manure, doing the work for you
- No cleaning of pig manure
- No odor from pigpen
- Reduce and help avoid water pollution, hence prevent health impact
- Pigs remain clean and healthy

Step by Step Guide

- 1 Use wire-cutter to cut the side panel to 1.6 meter length (use heavy duty panel wire or something similar that allows proper ventilation).
- 2 Cut two 1.5 meters posts using 2x2" timber for front post and two 1.1 meter posts using 2x2" timber for the back (local timber is a good alternative).
- 3 Tie the side panel with post using tie wire.
- 4 For roofing, drill 2 holes in the corner of 2x4 (1.6 meters length) and insert each to the four posts (front and back). Cut to 2.4 meters each of the five lengths from 2x2" timber as roofing rafters as shown in the design.
- 5 Fill the pigpen with bedding using dry leaves and related materials.
- 6 Compostable dry litter shall be added daily to the pen, and especially placing dry litter materials on top of any pig manure.
- 7 Remove excessive compost material once the height of the compost measures 10mm above the pigpen ground level.
- 8 Regularly remove used materials and manure and add to compost pile outside.

Materials & Tools

Four 2.6 meters square heavy duty wire
 Two 1.5 2meters 2'2 timber
 Two 1.1 meters 2'2 timber
 Five 2.4 meters 2'2 timber
 Tie wire and pleyer



Alternative design using local materials



Photo ©Kaboua John



For more Information Contact
 Environment Conservation Division, MELAD
 Phone : 74021095
 Bikenibeu Tarawa



Ridge to Reef Approach: Testing Spatial Prioritization in Tropical Island settings

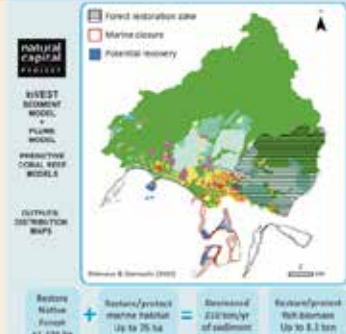


Support Collaborative Decision Making and Management

- Prioritize conservation areas at the national-scale that can benefit both terrestrial & marine environments
- Support local decision making by testing policy actions & estimating potential outcomes prior to implementation
- Provide information to foster dialogue between decision-makers
- Supports an iterative decision making process



Benefits of R2R approach Vanuatu Spatial Prioritization Trial



VINAKA

