



Pacific Islands Ridge to Reef National Priorities – Integrated water, land, forest and coastal management to preserve biodiversity, ecosystem services, store carbon, improve climate resilience and sustain livelihoods

Mainstreaming R2R Approach for Sustainable Development in the Pacific region. - *Conceptual Framework*

Sam, Shaleh & Ernie



- A **technical report** on options for mainstreaming R2R in the Pacific context
- Mainstreaming a Ridge to Reef Approach for Sustainable Development in the Pacific **A Practitioners' Guide**



- R2R Mainstreaming: From Strategy into Reality
What is Mainstreaming R2R?
- What are the Strategies for Mainstreaming R2R?
- Programme-based Approach for Mainstreaming R2R
- What are the Sub-Guides for Rolling Out the R2R Approach?





Entry Points for Mainstreaming R2R

- Steps to reach agreement (or not) to mainstream R2R approach
- Steps to reach agreement on scale and coverage
- Steps to reach agreement on theory of change, R2R Plans, On-site Management
- Approval and implementation

Strategies for Mainstreaming R2R Approach

IF people understand & value
mainstreaming R2R approaches:

- Scaling up R2R mainstreaming of advocacy campaigns
- Replicating participatory integrated R2R planning with envisioned R2R benefit flows
- Replicating R2R implementation of approved integrated R2R plans to realise R2R benefit flows

THEN

- Project supported PICs efforts to mainstream R2R approaches and integrations

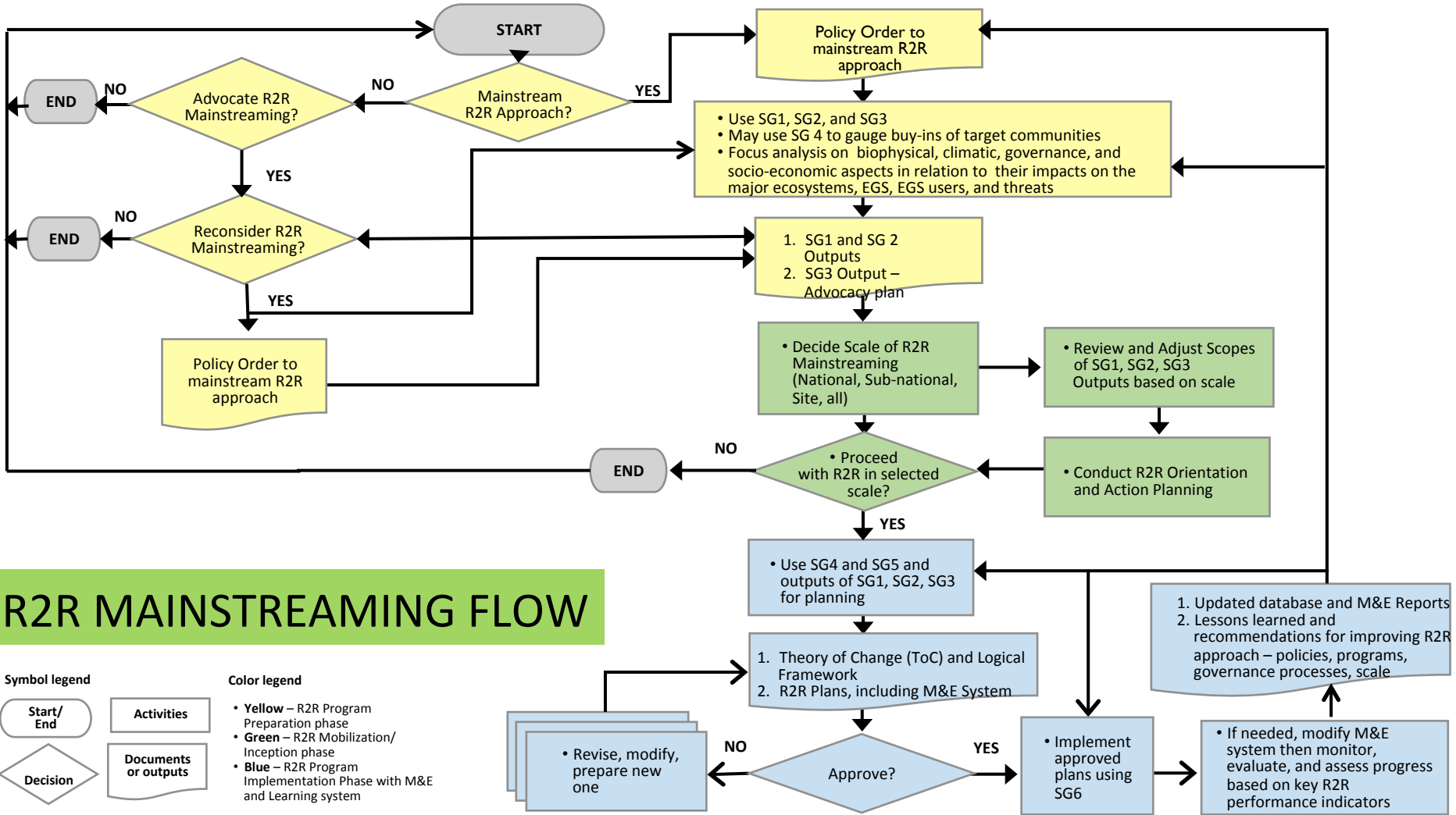
THEREBY

- Contributing to PICs R2R vision of enhanced EGS – reduce poverty, sustain livelihoods, build climate resilience



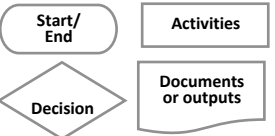
Suggested R2R mainstreaming sub-guides and their uses

R2R Mainstreaming Sub-Guides	R2R Mainstreaming Strategies			
	Advocacy Campaigns	Social Marketing (SM) Campaigns	R2R Planning	R2R Implementation
<i>SG 1- Data Gathering, Mapping, and Analyzing the Benefit Flows of Land-Sea Forms in Support of R2R Mainstreaming Strategies</i>	✓	✓	✓	✓
<i>SG 2- Identifying Relevant R2R Institutions and Establishing Governance Bodies for Steering, Directing, Supporting Policy Development, Planning and Implementing R2R Strategies at the Site, Sub-National, and National Levels</i>	✓	✓	✓	✓
<i>SG 3 – Developing Strategies for Advocating R2R Policies and Programs at the Site, Sub-National, and National Levels</i>	✓	✓	✓	✓
<i>SG 4 - SG 4 -Developing and Implementing Social Marketing Strategies for Target R2R Communities</i>	✓	✓	✓	✓
<i>SG 5 - Preparing, Legitimizing, and Seeking Approval of R2R Plans at the Site, Sub-National, and National Levels</i>	✓	✓	✓	✓
<i>SG 6 - Mobilizing, Organizing, and Strengthening R2R Implementing Units</i>	✓	✓	✓	✓



R2R MAINSTREAMING FLOW

Symbol legend



Color legend

- Yellow** – R2R Program Preparation phase
- Green** – R2R Mobilization/ Inception phase
- Blue** – R2R Program Implementation Phase with M&E and Learning system