

SUSTAINABLE FOREST MANAGEMENT - SFM1
 1.1: Enhanced enabling environment within the forest sector and across sectors
 1.2: Application of good management and practices in existing forests

LAND DEGRADATION - LD2
 2.1: Enhanced enabling environment within forests environments in drylands
 2.2: Improved forest management drylands
 2.3: Maintained functionality and cover of forests ecosystems in drylands

LAND DEGRADATION - LD1
 1.1: An enhanced enabling environment within the agricultural sector
 1.2: Improved agricultural management
 1.3: Sustained flow of services in agro-ecosystems

LD3
 3.2: Adoption of integrated landscape management practices by local communities

BIODIVERSITY - BD1
 1.1: Improved management effectiveness of existing and new protected areas
 1.2: Increased revenue for protected area systems to meet total expenditures required for management

CLIMATE CHANGE - CC5
 5.1: Restoration and enhancement of carbon stocks in forests and non-forest lands

CLIMATE CHANGE ADAPTATION - CCA1
 1.1: Mainstreamed adaptation in broader development sectors frameworks at country level and in targeted vulnerable coastal areas
 1.2: Reduced vulnerability in development sectors

CLIMATE CHANGE ADAPTATION - CCA2
 2.1: Increased knowledge and understanding of climate variability and change-induced risks at country level and in targeted vulnerable areas

CLIMATE CHANGE ADAPTATION - CCA3
 3.1: Successful demonstration, deployment and transfer of relevant adaptation technology in targeted areas

INTERNATIONAL WATERS - IW3
 3.1: Political commitment and capacity demonstrated for ICM integrating with existing IWRM commitments
 3.3: Enhancement of IW portfolio capacity and performance from active learning/KM/experience sharing

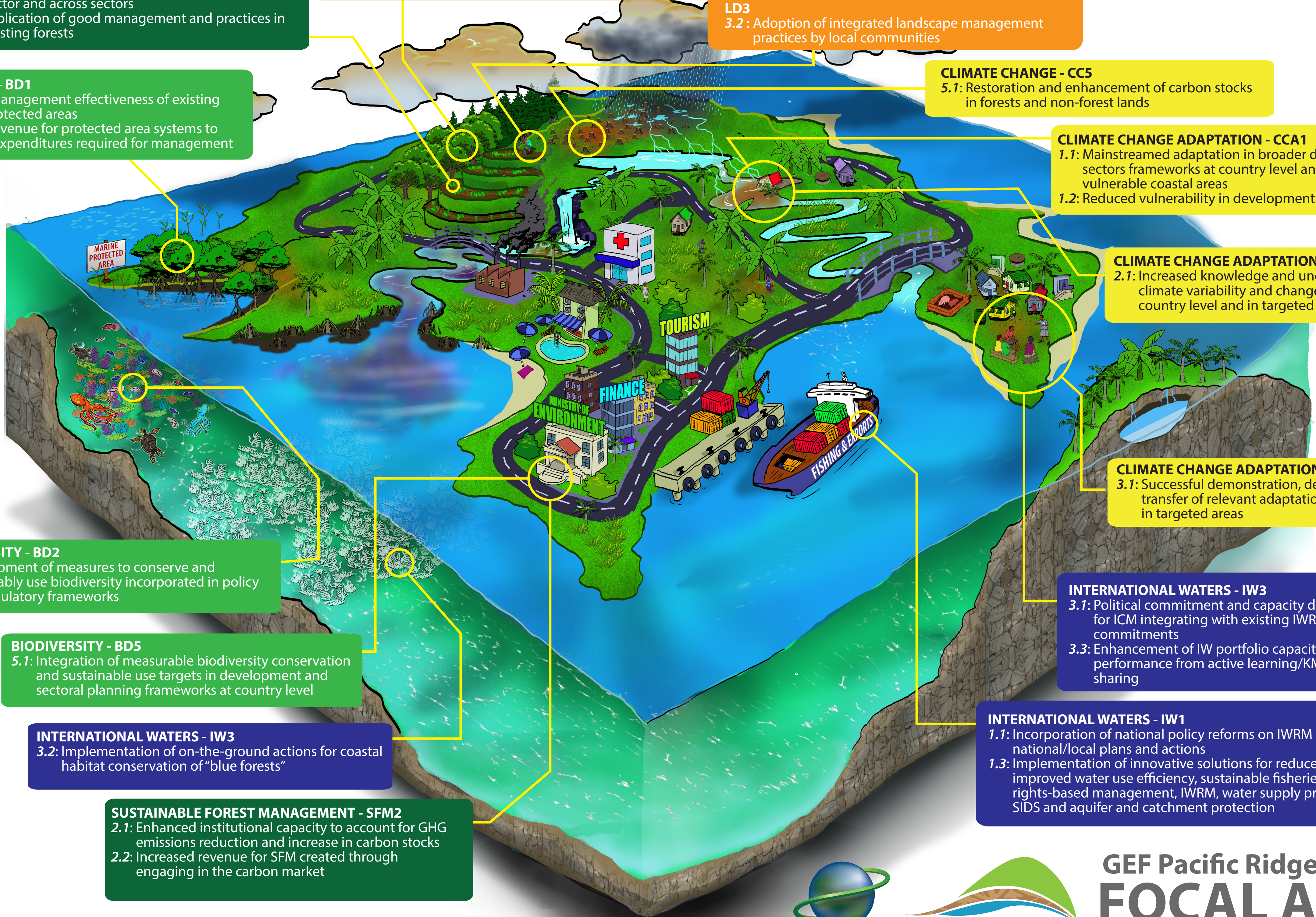
INTERNATIONAL WATERS - IW1
 1.1: Incorporation of national policy reforms on IWRM into national/local plans and actions
 1.3: Implementation of innovative solutions for reduced pollutions, improved water use efficiency, sustainable fisheries with rights-based management, IWRM, water supply protection in SIDS and aquifer and catchment protection

BIODIVERSITY - BD2
 2.2: Development of measures to conserve and sustainably use biodiversity incorporated in policy and regulatory frameworks

BIODIVERSITY - BD5
 5.1: Integration of measurable biodiversity conservation and sustainable use targets in development and sectoral planning frameworks at country level

INTERNATIONAL WATERS - IW3
 3.2: Implementation of on-the-ground actions for coastal habitat conservation of "blue forests"

SUSTAINABLE FOREST MANAGEMENT - SFM2
 2.1: Enhanced institutional capacity to account for GHG emissions reduction and increase in carbon stocks
 2.2: Increased revenue for SFM created through engaging in the carbon market



**GEF Pacific Ridge to Reef
 FOCAL AREA
 STRATEGY**