

# INTERNATIONAL WATER RIDGE TO REEF PROJECT VANUATU REHABILITATION EFFORTS

A Progressive Report Update: Quarter 3, 2020



Report Produced by:

Ericksen Packett

IWR2R National Project Manager/TRMC Secretariat

The Department of Environmental Protection and  
Conservation

Issue No. 3: 05<sup>th</sup> October, 2020



## Basic Data

Activity Name	Vanuatu IW R2R Project Rehabilitation Programme		
Project Site/Location	Tagabe River Catchment Area, Port, Vanuatu		
Contributing to/Achieving Project Objectives	Component 1	Strengthening coordination in support of the development and implementation of the Tagabe River Management Committee (TRMC)	
	Outcome 1.2	Replication of Best Practices and Lessons Learned from IWRM Sarakata Catchment Demo Project	
	Targets End of Project	Buffer and Protected Use areas established and adhered to.	
	Component 3	Establishing partnerships for sustainable coastal area development.	
	Outcome 3.1	A multi-sectoral partnership that should revive the Existing Botanical Garden providing environmental and educational benefits to the Tagabe River Catchment	
	Targets End of Project	Existing Botanical Garden preserving Vanuatu's floral biodiversity and operating as a self-sustaining entity for the national botanical garden. 30 hac established and planted with rare endemic species in Vanuatu.	
Financial Expenditures	Projects	VUV	USD
	Tagabe Catchment Restoration Project	147,760	1,263.55
	Co-financing 15,000	128.27	
	Total	162,760	1,391.82

## Table of Contents

Basic Data .....	1
IWR2R Project Vanuatu Rehabilitation Programmes .....	3
1. Tagabe River Restoration Project .....	3
2. Tagabe Catchment Restoration Project.....	3
3. Blacksand Coastal Restoration Project.....	3
Tagabe Catchment Restoration Project (TCRP).....	4
TCRP_ Field Monitoring.....	5
Nursery Stock: Department of Environmental Protection.....	5
TCRP: Field Monitoring and Maintenance Program.....	5
Tagabe River Restoration Project (TRRP).....	6
Tagabe River Restoration Project Nursery: DOF.....	7
Nursery Stock Dept. of Forestry.....	8
IWR2R Vanuatu Rehabilitation Statistics .....	9
Rehabilitation Project: Field Count (2019-2020) _ Quarter 3 Update.....	9
Ongoing Activities for Quarter 4 .....	9
Annexes .....	10
1. Tree Planting Activity Reports .....	10
2. Tagabe Catchment Restoration Project: Field Monitoring and Maintenance Activity Report. ....	12
3. Tagabe River Restoration Project Nursery Activities by DOF.....	15
Activity Report for August .....	15
Activity report for September.....	16

# IWR2R Project Vanuatu Rehabilitation Programmes

As per components 1 and 3 from the National Log Frame, the following restoration projects were embedded upon achieving key deliverables within the overall Vanuatu R2R pilot projects. These restoration projects are also aligned towards achieving the GEF stress reduction initiative for Vanuatu pilot project as documented within the project document.

Vanuatu pilot project has since last year 2019 implements at least three (3) restoration projects within its demonstration site.

## 1. Tagabe River Restoration Project

This project specifically focuses on restoring and rehabilitating riparian areas of Tagabe River with livelihood trees. However serving its greater significant to stabilize the river banks but also gaining visibility by way of policy reformation to established buffer area regulations to improve water quality by having controlling over unstainable land practice and minimizing water pollution. It should also account for mitigating soil erosions, improve surface water quality, succession ally restore and maintain freshwater lifeforms, and hierarchically improving the quantity and quality of Tagabe River.

## 2. Tagabe Catchment Restoration Project

The catchment restoration project will ensure to revive and maintain the existing Botanical Garden and restore a functional native forest within the identified degraded areas in Matnakara Water Protection Zone 1 (MWPZ1). The botanical garden should accommodate mostly endemic flora species that will be protected and conserved within this legally protected area for future references as a living Herbarium. The native forest itself will be restored with a rough estimation of 14.6 hectors hoping to achieve in the future the improvement of quality and quantity for both surface and underground. A native forest also as an ecosystem of its own will entirely attract the return of key species and eventually provide favorable habitat for many flora, fauna and bird species that will solidify its ecosystem functioning.

## 3. Blacksand Coastal Restoration Project

The project also propose to extend its rehabilitation efforts onto coastal areas of Blacksand. Its purpose serves to restore a native coastal forest on selective sites fragmented along the shorelines of Blacksands. Coastal species will contribute towards the resilient for the coast itself as well as the coastal communities against the impacts of climate change.



## Tagabe Catchment Restoration Project (TCRP)

Tagabe Catchment restoration project initially began last year, 2019 with the establishment of a nursery house raising diverse wildling tree species. Already in 2019 we achieved three (3) mass wildling/tree collection with a major tree planting. Currently up-to-date this year, a total of 3 major planting has been conducted with ongoing efforts to consistently monitor and maintained the rehabilitated site.

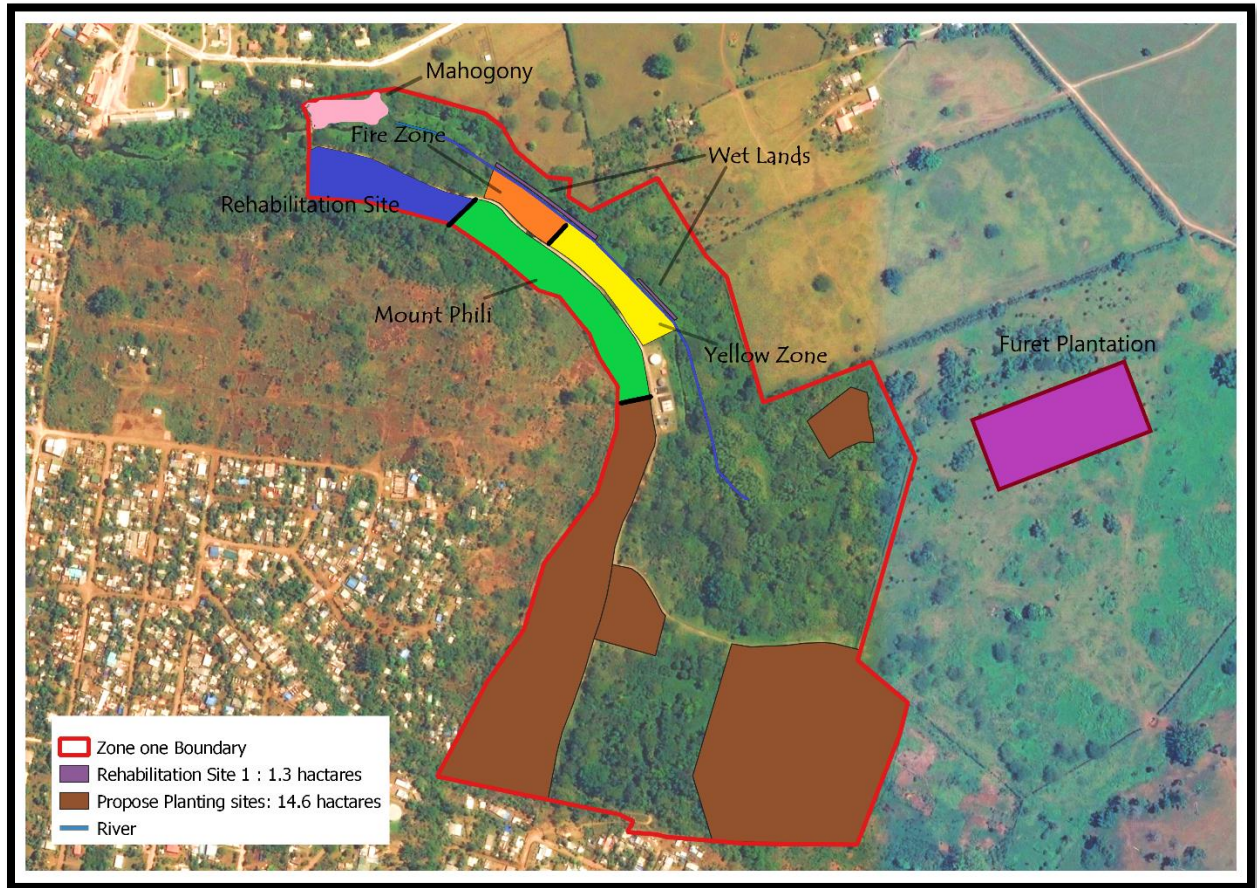


Figure 1 Shaded in Blue, light Pink and Dark Pink are the Rehab Site restored during the month of August via various rehab programs stated in table (1).

The map highlight (in brown) the proposed rehabilitation sites within Matanakara Water Protection Zone 1. Other shaded areas (yellow, green, blue, orange and pink) are the current rehabilitee sites (define on the map as 'Zones'). Shaded in blue and pink (light and dark) are site being restored during this quarter.

## TCRP\_ Field Monitoring

<b>Tree Planting No.2</b>			
<b>Date</b>	<b>Rehabilitation Projects</b>	<b>Site/Zone Name</b>	<b>Total No. of Plants</b>
<b>19<sup>th</sup> &amp; 20<sup>th</sup> August, 2020</b>	<b>Tagabe Catchment Restoration Project</b>	<b>Matnakara Water Protection Zone 1</b>	<b>400</b>
<b>Forestry Week (24<sup>th</sup>-28<sup>th</sup> August, 2020)</b>	<b>Tagabe Catchment Restoration Project</b>	<b>Matnakara Water Protection Zone 1</b>	<b>60</b>
		<b>Matnakara Water Protection Zone 2</b>	<b>400</b>
<b>Total</b>			<b>860</b>

Table 1 Rehabilitation activities schedule in the 3<sup>rd</sup> Quarter.

A mass planting was conducted on the 19<sup>th</sup> and 20<sup>th</sup> August with additional 400 plants put into purpose on the new rehab site shaded in blue. An addition on the national forestry week (24<sup>th</sup>-28<sup>th</sup> August) addressing the need to support the catchment restoration project with 460 plants on the shaded site in MWPZ1 and MWPZ2.

## Nursery Stock: Department of Environmental Protection

The Tagabe Catchment Restoration Project has its nursery house established with the Department of Environmental Protection and Conservation whom is also the national hosting agency for the R2R Project Vanuatu. Nursery establishment was the milestone achievement for the project.

<b>Nursery Monitoring &amp; Tree Planting</b>					
<b>Period of Nursery Raising and Monitoring</b>	<b>Total Collection (as of 2019)</b>	<b>Mortality Rate</b>	<b>No. of Plants Survived</b>	<b>No. of Plants Planted</b>	<b>Remaining Nursery Stock</b>
<b>2020</b>	<b>2891</b>	<b>1,387</b>	<b>1504</b>	<b>1267</b>	<b>235</b>

Table 2, 2020 Nursery Monitoring Statistics.

Further there were no tree collection initiative conducted for the project this year. The nursery house was only replenish with the last year tree collection conducted all year around with a total of 2891 plant species. Another 209 plants from the stock were exposed to mortality as of this 2020 (Q1&Q2) with remaining stock balance at 1187.

## TCRP: Field Monitoring and Maintenance Program

In detail, the project major rehabilitation focuses on Matnakara Water Protection Zones (MWPZs) degraded sites. This is subject to rehabilitation activity 1, whereby degraded area is define as grasslands and generally creepers and vines (bush). The project intends to restore these areas with native, endemic and threatened flora species and thus should encourage establishment of a native forests.

Last year, 2019, the project started with a major tree planting. With no further delay, the project advances this year with 3 major planting. However, the TCRP now requires consistent monitoring and maintenance thorough out its rehabilitated sites. In such case, **“monitoring refers to field county/pant inventory”** whereas maintenance can be referred to as either **“ring weeding, mulching, clearing of undesired plants which includes trees, creepers around the plants to ensure conditions are right and survival rate is guaranteed”**.

<i>Field Monitoring and Maintenance (FMM) Programs</i>		
<i>FMM No.</i>	<i>Date</i>	<i>Rehab Sites/Zones</i>
<i>FMM No. 6</i>	<i>13<sup>th</sup>, 14<sup>th</sup>, 15<sup>th</sup> July</i>	<i>Yellow Zone, Fire Zone, Wetlands, Mount Phil (A&amp;B)</i>
<i>FMM No. 7</i>	<i>7<sup>th</sup>, 10<sup>th</sup>, 11<sup>th</sup> August</i>	<i>Yellow Zone, Fire Zone, Wetlands, Mount Phil (A&amp;B)</i>
<i>FMM No. 8</i>	<i>21<sup>st</sup>- 25<sup>th</sup> September</i>	<i>Yellow Zone, Fire Zone, Wetlands, Mount Phil (A&amp;B), New Rehab Site and Mahogany (Forestry)</i>

Table 3 Field Monitoring and Maintenance program through the 3rd Quarter

Additionally, a field monitoring plan has been compiled by the national project manager to ensure consistency on maintenance and monitoring programs. However, the growth rate at which the weed and undesired plant grow remains complex and unstable due to precipitation patterns. Thus, maintenance is not consistent and is conducted as requirement from field observation. You may refer to annex 1 for a detail field report for each FMM.

## Tagabe River Restoration Project (TRRP)

The Ridge to Reef concept is integral and thus incorporated related rehabilitation project activities. To claim its basic principal to intergrade ecosystem based adaptation into watershed management, the project extends its rehabilitation efforts onto the lower catchment. Therefore, the TRRP restore Tagabe River with livelihood species essential beginning from Tagabe River upstream and towards Blacksand coastal waters. Contrarily the project deters with collaborative partners embracing its progress during planning and implementation.

In doing so, a Memorandum of Understanding (MoU) was the basic instrument that forges formally the collaborative partnership between IW R2R Project and the other key figures to reaffirm their commitment and engagement which was signed on the 9<sup>th</sup> of April. These bilateral key stakeholders are the basic and essential partners processing priority agendas on the related activity course and wherefore contributing in terms of both technical services and financial commitment.



## Tagabe River Restoration Project Nursery: DOF

The Tagabe River Restoration Project began in 2018 concord from an agreement between the DOF and SPREP PEBACC Project in 2018 to restore the riparian areas of Tagabe River. As part of this mutual understanding, nursery activities carried in DOF nursery with the assistant of PEBACC Project to establish nursery beds as well as meeting plant collections and nursey maintenance. Around a 2000 plants as a result of their collaborative works were restored back into designated riparian sites along Tagabe River. However, April 9<sup>th</sup> of this year, 2020, the IW R2R Project also commits to the original understanding and thus provides support by way of MOU with DOF to further strengthen this collaborative efforts fulfilling the Riparian Restoration Project.

The IW R2R Project came to support the original understanding by means of financial resources allocation towards nursery stock/activity maintenances for both the Tagabe Riparian Restoration Project and Blacksand Coastal Restoration Project. The project also is responsible to allocate supplementary budget for field activities as per quarterly planning proper for both projects which includes tree planting activities, monitoring and maintenance.



Figure 2 Tagabe River Restoration Project Nursery Stocks at Dept. of Forestry, Shefa Nursery



Seedling Stock for Tagabe River Riparian Project-July 2020			
Species Type	Common Name	No. of Seedlings	Comments
<b>Canarium indicum</b>	Nanagae	1140	Fruit tree
<b>Calophyllum inophyllum</b>	Nambagura (Tamnau)	1000	Coastal species
<b>Pedagodoxa Spp</b>	Palms	94	Endemic Spp
	Avocado	8	Fruit tree
<b>Zyzygium Speces</b>	Nakafika	400	Fruit tree
<b>Mangifera minor</b>	Mango	53	Fruit tree
<b>Swietenia macrophylla</b>	Mahogany	750	Timber Specie
<b>Terminalia catappa</b>	Natapoa	500	Fruit tree
<b>Barringtonia edulis</b>	Navele	29	Fruit tree
<b>Chrysopogon zizanioides</b>	Vetiver	51	soil Control spp
	W/Pandanus	500	Coastal species
<b>Citrus spp</b>	Thafrican Lime	7	Fruit tree
<b>Agathis macrophylla</b>	Kauri	49	Timber Specie
<b>Santalum austracalendonicum</b>	Sandalwood	68	Commercial spp
<b>Segurinega flexuosa</b>	Namamao	218	Livelihood spp
<b>Acacia spp</b>	Namariu	247	Coastal species
<b>Pometia pinnata</b>	Nandao	26	Fruit tree
<b>Casuarina spp</b>	Oak Tree	7	Coastal species
<b>Citrus spp</b>	Lemon	46	Fruit tree
	Natangura	20	Livelihood spp
	Pigeon Peas	183	Food security & legume
<b>Inocarpus fegifera</b>	Namambe	50	Food security
	Carasole	140	Fruit tree
<b>Coconucifera spp</b>	Coconuts	460	Food security
<b>Atocarpus atilis</b>	Breadfruits	50	Food security
<b>Total Stock :</b>		<b>6096</b>	

Table 4 Nursery Stock for TRRP

The nursery officer hired through the Department of Forestry is responsible for day-day technical management such as;

1. Stocking of Nursery
2. Potting of Poly Bags
3. Transplanting of Plant
4. Raising and Nursing of Seedlings
5. Weeding and Watering
6. Monitoring- Stock Count

# IWR2R Vanuatu Rehabilitation Statistics

## Rehabilitation Project: Field Count (2019-2020) \_ Quarter 3 Update

Rehabilitation Projects	No. of Trees Planted	Plants Survived	Mortality Rate Per Plants	No. of Replacement Plant
Blacksand Coastal Restoration Project	825	305	520	12
Tagabe Catchment Restoration Project	1,782	1,760	22	22
Tagabe River Restoration Project	330	330	0	0
<b>Total</b>	<b>2,937</b>	<b>2,395</b>	<b>542</b>	<b>34</b>
<b>Total Survival Rate/Plants (Total No. of Trees Planted + No. of Replacement Plant)</b>				<b>2,971</b>

Table 5 Rehabilitation up-to-date statistics


## Ongoing Activities for Quarter 4

1. Tagabe Catchment Restoration Project- 2 Major outer island collections.
2. Tagabe River Restoration Project- 1 Major Tree planting on sites and 1 Major Relocation of Trees.
3. Blacksand Coastal Restoration Project- Field Monitoring and Maintenance.

Note: Field monitoring and maintenance is a consistent through all three (3) Rehabilitation Projects


# Annexes

## 1. Tree Planting Activity Reports



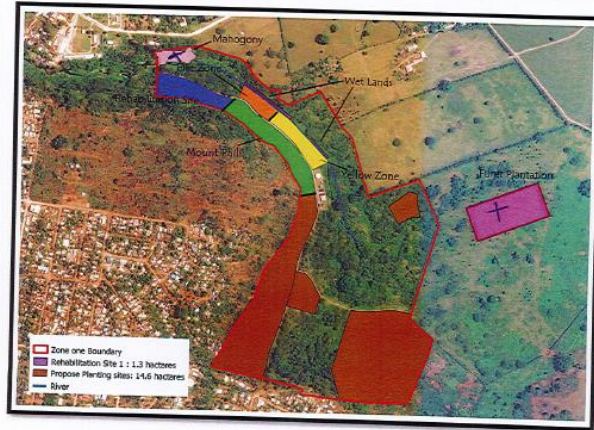
**IW R2R Project Vanuatu Rehabilitation Tree Planting Activity No. 3**

Date	25 <sup>th</sup> - 27 <sup>th</sup> August, 2020 / 24 <sup>th</sup> launching of National Forest Week	
Location	Molunasa Wetland Protection Zone I & 2 - Togaube Catchment Rehabilitation Project.	
Zone(s)	Highlighted in Pink	
Activity	Bush Clearing (Waet Man Bras)	✓
	Ring Weeding	✓
	Digging Hole	✓
	Tree Planting	-
Output/Observation	<ul style="list-style-type: none"> <li>➢ 360 Mahogany Trees planted on this day</li> <li>As to about the launching of the National Forest Week.</li> <li>➢ 400 Mahogany Trees were planted on Wetland Forest Rehabilitation as part of National Forest Activity.</li> </ul>	
Recommendations	<ul style="list-style-type: none"> <li>➢ Consistent Field Monitoring &amp; Maintenance</li> </ul>	
Accountable Funds (To be filled out by National Project Managers)	Project Expenditure	Co-financing
	Refer to Q3 Rehab Report	➢ 5000 (DER).



**IW R2R Project Vanuatu Rehabilitation Tree Planting Activity No. 2**

Date	19 <sup>th</sup> & 20 <sup>th</sup> August, 2020	
Location / Project	Togaube Catchment Rehabilitation Project Molunasa Wetland Protection Zone I.	
Zone(s)	In (In Blue Circle Map)	
Activity	Bush Clearing (Waet Man Bras)	✓
	Ring Weeding	✓
	Digging Hole	✓
	Tree Planting	✓
Output/Observation	<ul style="list-style-type: none"> <li>➢ 600 trees planted</li> <li>➢ All were chosen species</li> <li>➢ 110 were Mahogany trees</li> <li>➢ Bush Clearing was made along tree proximity.</li> <li>➢ Ring Weeding was also done around the plants protection.</li> <li>➢ 46 plants were planted along to Main Road.</li> </ul>	
Recommendations	<ul style="list-style-type: none"> <li>➢ thorough white man touch be made</li> <li>➢ (lasts) Advice for possible relocation for plants within 10 meters range of electrical power line.</li> <li>➢ Thus, Relocation is needed.</li> </ul>	
Accountable Funds (To be filled out by National Project Managers)	Project Expenditure	Co-financing
	Refer to TOR for tree planting	10,000 vada (DER).




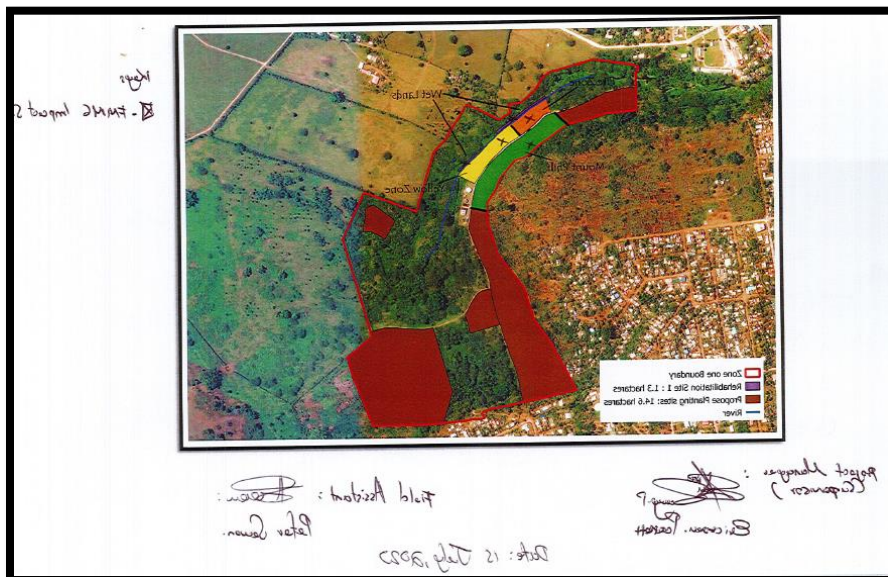
National Project Manager: Erica Porett

Implementing Partners: \_\_\_\_\_



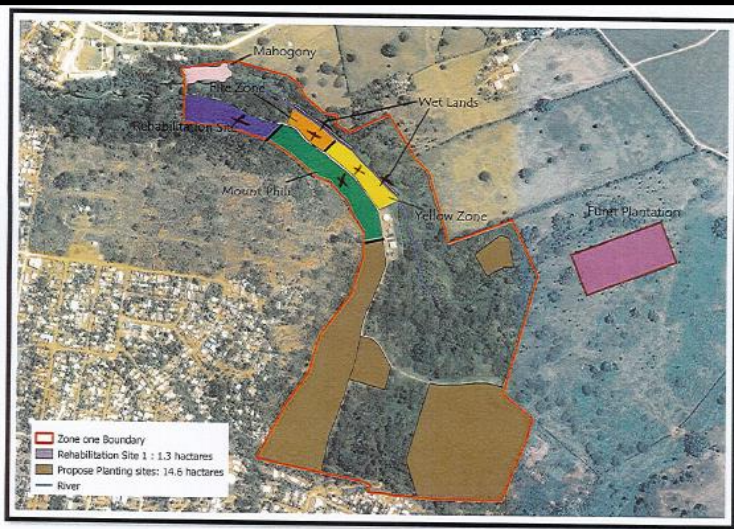
## 2. Tagabe Catchment Restoration Project: Field Monitoring and Maintenance Activity Report.

		
IW R2R Project Vanuatu Rehabilitation_ Field Monitoring and Maintenance No. 6		
Date	13 <sup>th</sup> , 14 <sup>th</sup> , 15 <sup>th</sup> July, 2020	
Location	Tagabe Catchment Restoration Project	
Zone(s)	Hillside Zone, Fire Zone, Wet lands, & Mount Phit	
Activity	Ring Weeding	✓
	Bush Clearing (Waet Man Bras)	✓
	Field Count	✓
	Replacement of Death trees	✓
Observations	<p>→ Bushes were overgrowing the plants. Most plants were totally covered by bush vines and grasses. This acts consequentially to reduce the growth of the plants.</p> <p>→ No plants were replaced.</p> <p>→ It was not ideal for a using weeding or cut or bush clearing. Both using weeding and bush clearing was done in all rehab sites.</p> <p>→ This FMMG was much intense and that it took more time ensure maintenance.</p>	
Recommendations	<p>→ Next FMM, FMM should be basically involved only using weeding</p>	
Accountable Funds	Project Expenditure	Co-financing
	<p>20,000 - Local field Assistant</p> <p>5,000 - Transportation (Day 1)</p>	5000 - DEPC CG-Vehicle, Day 2 & 3



### IWR2R Project Vanuatu Rehabilitation, Field Monitoring and Maintenance No. 7

Date	7 <sup>th</sup> , 8 <sup>th</sup> & 10 <sup>th</sup> August, 2020	Location / Project	MWPZ I - Tapsoko Catchment Rehabilitation Project
Zone(s) / Rehab Sites	Yellow Zone, Fire Zone, Wetlands & Mount Phil		
Activity	Ring Weeding		✓
	Bush Clearing (Waet Man Bras)		✓
	Field Count		
	Replacement of Death trees		
Outcomes	<ul style="list-style-type: none"> <li>The above activities conducted during each field monitoring &amp; maintenance (MWPZ I) resumed in each rehab sites / Zones; Yellow, Fire, Wetlands &amp; Mount Phil.</li> <li>0 Mortality rate of plants - No Replacement.</li> <li>After the <del>Final</del> Rehab activities (in Mount Phil), plants has shown progress in growth; adapting favorably to the new environment. - less Mortality Rate on Site.</li> <li>Yellow, Fire &amp; Wetlands - plants are achieving progress growth.</li> </ul>		
Observation	<ul style="list-style-type: none"> <li>less Mortality Rate expectation in all Rehab zones</li> <li>Plants, even though experienced progressive growth, - Top <del>and</del> are delayed/delinked over the long sunny/hot period.</li> </ul>		
Recommendations	<ul style="list-style-type: none"> <li>Requires bush clearing approach for the next FMMs.</li> </ul>		
Accountable Funds	Project Expenditure	Co-financing	
	<ul style="list-style-type: none"> <li>Refers to TOR</li> <li>Transportation - 2000Vt</li> </ul>	- 7,000 (DPR)	



Supervisor: Ericson P. P. *[Signature]*

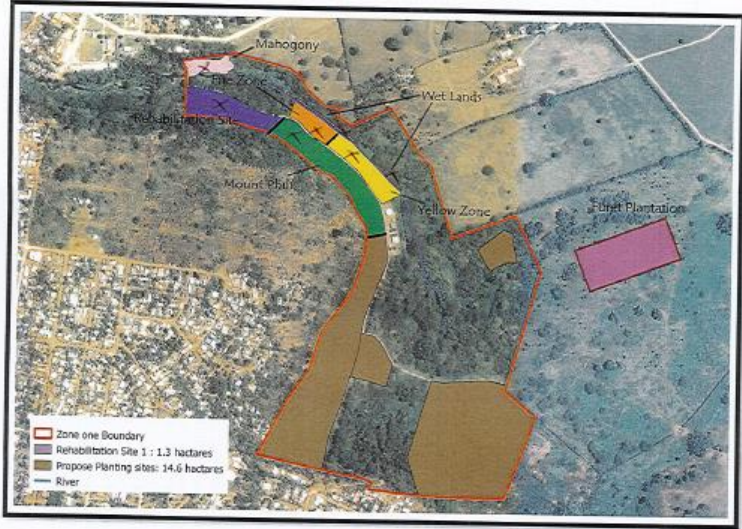
Date: 10<sup>th</sup> August, 2020

Local Field Assistant: Peter Sewien *[Signature]*



### IWRZ Project Vanuatu Rehabilitation Field Monitoring and Maintenance No. 5

Date	21 <sup>st</sup> - 25 <sup>th</sup> September, 2020	Location / Project
Zone(s)	Mount Phil, Fire Zone, Yellow Zone, Wetlands, Rehab Sites, <del>Wetlands</del> Mahogany.	
Activity	Ring Weeding	✓
	Bush Clearing (Waet Man Bras)	✓
	Field Count	✓
	Replacement of Death trees	✓
Outcomes	<ul style="list-style-type: none"> <li>• The following activities outlined in each Rehab Sites were fully performed with satisfaction.</li> <li>• Newly rehabilitated sites - plants show sign of progress in growth. There were no death trees during monitoring.</li> <li>• Other Rehab Zone/sites - Shows sign of progress in growth &amp; adaptation.</li> <li>• Forestry site (Mahogany) - Weeding happened in this area / show sign of success in its growth.</li> </ul>	
Observation	<ul style="list-style-type: none"> <li>▶ With last few Weeks of Continuous raining, the plant experienced sign of Rain and trees grow At a faster Rate.</li> <li>▶ Bums /unwanted plants grow even more competitive than before.</li> </ul>	
Recommendations	<ul style="list-style-type: none"> <li>▶ Ring Weeding / Monitoring for FAULT 9.</li> <li>▶ More Rehabilitation needed in wetlands.</li> <li>▶ Replacement of plants /Rebation of plants to New sites.</li> <li>▶ Needs gap filling alerts in follow up.</li> </ul>	
Accountable Funds	Project Expenditure	Co-financing
	Refer to TOR for field details.	15000 ut (DEPC)



Supervisor: Emmanuel P. P.

*[Signature]*

Date 25/09/2020

Local Field Assistant: *[Signature]*

Peter Sewer

### 3. Tagabe River Restoration Project Nursery Activities by DOF Activity Report for August

Date	Activities	Comments
<b>AUGUST 3-31 2020</b>		
	<ul style="list-style-type: none"> <li>Transplant Namamau geminants-concrete Bed -448 &amp; Steel bed -315</li> </ul>	448 planted on Concrete bed
	<ul style="list-style-type: none"> <li>Transplant 37 namamau</li> <li>Cut grass around the nursery building –</li> <li>Collect the rubbish and water the plants</li> </ul>	<ul style="list-style-type: none"> <li>872 plants on Steel Bed</li> <li>Nursery ground maintained</li> </ul>
	<ul style="list-style-type: none"> <li>Weedout kohu seedlings 310</li> <li>Weed out 272 Seedlings-Namamau</li> <li>Transplant 80 die back-namamau</li> </ul>	<ul style="list-style-type: none"> <li>310 kohu seedlings weeded</li> <li>272 Namamau seedling weeded</li> </ul>
	<ul style="list-style-type: none"> <li>Transplant 81 Natapoa</li> <li>Replace old pots and stack Natapoa seedlings</li> </ul>	81 Natapoa Transplanted
	<ul style="list-style-type: none"> <li>Transplant 50 Namamau geminants</li> <li>Change poly bags – 180 Natapoa seedlings and stacked</li> <li>Pick Rubbish around the beds and water the seedlings</li> </ul>	
	<ul style="list-style-type: none"> <li>Clean around the nursery ground and storage</li> <li>Weed inside nanae bed</li> <li>Replace the die back</li> </ul>	
	<ul style="list-style-type: none"> <li>Stack 228 Natapoa seedlings today</li> <li>Transplant 125 Namamau dieback</li> <li>Restacked 1528 Natapoa Seedlings after a thorough weeding and collect rubbish</li> <li>Restack 30 empty pots</li> <li>Collect soil off tore polybags for storage</li> </ul>	<ul style="list-style-type: none"> <li>2056 Natapoa Seedlings restacked</li> </ul>
	<ul style="list-style-type: none"> <li>Restack 120 natapoa after weeding the pots</li> <li>Weed around the germination bed</li> <li>Transplant 50 namamau</li> <li>Restake 56 mango &amp;16 navele</li> <li>Water seedlings</li> </ul>	<ul style="list-style-type: none"> <li>72 Fruit trees retacked</li> </ul>
	<ul style="list-style-type: none"> <li>Weeding of nursery beds</li> <li>Rake and collect rubbish</li> <li>Transplant 50 Namamau</li> <li>Weed around the sandalwood seedlings-30 and Tamanu -52</li> <li>Recount Kohu-337 seedlings</li> </ul>	<ul style="list-style-type: none"> <li>30 sandalwood seedlings weeded</li> <li>52 Tamanu seedling weeded</li> <li>337 Kohu seedling in stock</li> </ul>
	<ul style="list-style-type: none"> <li>Transplant 165 namamau</li> </ul>	<ul style="list-style-type: none"> <li></li> </ul>



	<ul style="list-style-type: none"> <li>Weed around the coconut seedlings- 4seedbeds, 1 bed pandanas, 1 Bed Namambe (bareroot), 1-bed pandanas &amp; vertifers(bareroot)</li> <li>Collect and remove the rubbish</li> <li>Transplant 98 namamau</li> <li>Stock take coconuts-845, Namambe-74, Pandanas-19</li> </ul>	<ul style="list-style-type: none"> <li>7 ground beds weeded and cleaned</li> <li>Coconut seedling in stock 845</li> <li>19 pandanus</li> <li>74 Namambe</li> </ul>
--	---	--

### Activity report for September

Date	ACTIVITIES	Comments
	<b>1-30 September</b>	
	<ul style="list-style-type: none"> <li>Weeding of nangae seedlings inside long Poly Bags</li> <li>Trimming dead leaves and properly staking the manage pots.</li> <li>Transplant 120 namanau into the dieback pots</li> <li>Rake dead leaves and grass and dispose at the dumpsite</li> <li>Slash grass and weed around the germination bed <ul style="list-style-type: none"> <li>Spread out tapulin and green net under the namamau tree to collect fallen seeds</li> </ul> </li> <li>Weed two standout beds with mix species</li> <li>Clean-up inside the tool house and sites for New Soil Shed Building</li> <li>Help out by removing tools to research tool house and give away the following seedlings: <ul style="list-style-type: none"> <li>3 natapoa</li> <li>3 coconuts</li> <li>2 nakatabol</li> <li>2 castapol</li> <li>2 nakavika to UN Womens to plant them at Marobe market place.</li> </ul> </li> <li>Also gave 1 Natapoa to Michel (origin gaz) to plant it in Mele village</li> <li>Removed nangai branches and clean-up.</li> <li>Transplant 50 namamau plus weeding</li> <li>Transplant 725 namamau and 100 pandanus</li> <li>Restacking of vetiver grass, 10 black palm, weed inside nangai bed.</li> <li>Give away 4 natapoa to USP students</li> <li>Weed around nursery area and transplant: <ul style="list-style-type: none"> <li>21 nadao</li> <li>60 black palm</li> <li>53 nakatabol</li> <li>30 palm</li> </ul> </li> <li>Weeding and stacking of seedlings: <ul style="list-style-type: none"> <li>312 namamau</li> <li>20 black palm</li> <li>120 nakavika</li> </ul> </li> <li>And transplant <ul style="list-style-type: none"> <li>39 namamau</li> <li>Fanny gave away seedlings</li> <li>16 sandalwood to USP Students</li> </ul> </li> <li>Transplanting of: <ul style="list-style-type: none"> <li>251 namamau</li> </ul> </li> </ul>	<ul style="list-style-type: none"> <li>Nursery hygiene is maintained</li> <li>Namamau seedling Hardened</li> <li>232 Dieback namamau germinants replaced</li> <li>13 Livelihood seedlings distributed</li> <li>725 namamau germinants transplanted</li> <li>4 natapoa seedling to USP students</li> <li>30 Rootstock –citrus ready for grafting</li> <li>Cleared</li> </ul>

	<ul style="list-style-type: none"> <li>• Replace 14 death Nagai germinants</li> <li>• Weeding inside the tamanu and nangai seedlings. Pruned the leaves and rake around the beds.</li> </ul> <p>Attend staff meeting in the morning. Pruned natapoa leaves plus weeding and transplant of</p> <ul style="list-style-type: none"> <li>• 20 namamau</li> </ul> <p>SANMA DAY.</p> <ul style="list-style-type: none"> <li>• Assist Judy with decorate YUMI GO stage with fruits trees and other livelihood trees from (TRRRP)</li> <li>• Water the seedlings and weed one seed bed this morning.</li> <li>• Assist in the nursery with the help of Judy Kalotap to received clients that were there to have more access to information on trees that were raised in the nursery.</li> <li>• Help Judy transport the seedlings back to the nursery</li> <li>• Damage seedlings were re-potted into new polybags and thoroughly watered</li> <li>• Weeding around coconut and other sowing bed areas at the nursery</li> <li>• Restacking of thatch seedlings and other fruit trees.</li> <li>• Preparation of grafting materials –Rootstock-citrus 30</li> <li>• Stacking of 50 namamau and stacking of 25 polybags. Weeding also took place at that time</li> </ul>	
--	---	--