



---

GEF IW R2R/ RSC.5/ WP.07

Date: 21<sup>st</sup> October 2020

Original: English

**Fifth Regional Steering Committee Meeting (Virtual) for the  
GEF Pacific International Waters Ridge to Reef Project entitled:**

*Ridge to Reef – Testing the Integration of Water, Land, Forest &  
Coastal Management to Preserve Ecosystem Services, Store Carbon,  
Improve Climate Resilience and Sustain Livelihoods in Pacific Island Countries*

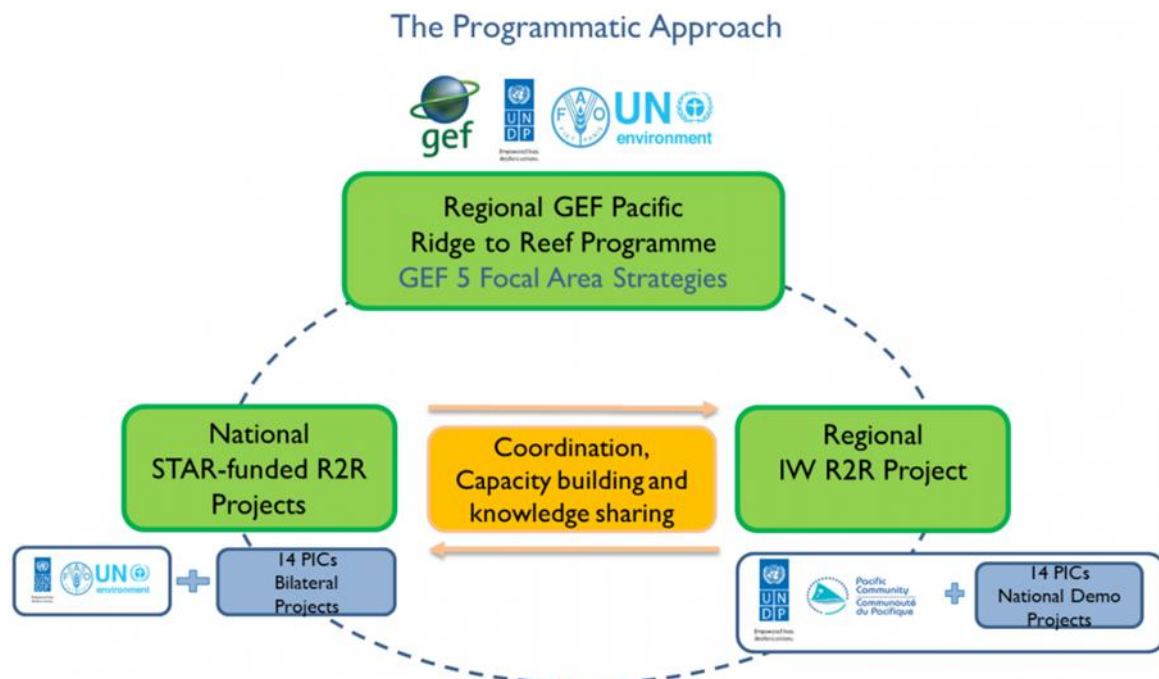
Suva, Fiji 22<sup>nd</sup> to 23<sup>rd</sup> October 2020

**Launching of the Pacific R2R Programme website and related online tools**

## Launching of the Pacific R2R Programme website and related online tools

The **Pacific Ridge to Reef Programme** is a multi-focal area programme guiding coordinated investment of over US\$90 million in GEF grant funding across its focal areas of biodiversity conservation, land degradation, climate change adaptation and mitigation, sustainable land management, sustainable forest management, and international waters in Pacific Small Island Developing States (SIDS). It is a multi-agency initiative involving the United Nations Development Programme (UNDP), the United Nations Food and Agriculture Organization (FAO), and the United Nations Environment Programme (UNEP) as GEF implementing agencies.

Executed regionally by the Pacific Community through the Regional International Waters Ridge to Reef Project (Regional IW R2R Project), the R2R programme is supported in areas of science-based planning, human capital development, policy and strategic planning, results-based management, and knowledge sharing. The Regional Programme Coordinating Unit (RPCU), hosted by the Pacific Community's Geoscience Division based in Fiji.



Global experience in integrated natural resource and environmental management have demonstrated that efforts to integrate water, land and coastal management have often been of less priority when introduced at the national and sub-national levels of government. As a result, national leaders of these processes need to be able to effectively communicate the benefits of integrate approaches across a broad range of government agencies and local institutions in order to impact: policy and development planning; investment in efforts to reduce stress on natural resources and improve environmental state; and in strengthening community engagement in management.

The terminal evaluation of the GEF Pacific IWRM project highlighted that communications and knowledge management were critical elements in the efforts to raise awareness, to stimulate support for necessary policy and legal reforms, and for global outreach with donors and sister initiatives in the Caribbean and the Indian and Atlantic Oceans PICs. In the same review it was also identified that communications and knowledge management initiatives of the Pacific IWRM initiative were essential in ensuring that best practices generated through national IWRM demonstration

projects and national policy development processes were captured, shared and effectively communicated to guide the longer-term sustainability and scaling up of investments.

The R2R networking and partnerships component builds on these achievements through development of national and regional platforms for managing information and sharing best practices and lessons learned from efforts of this project to support the mainstreaming of the integration of water, land, forest and coastal management.

### **Pacific R2R Programme Network**

Networks are increasingly seen as playing an important role in the way activities are coordinated, information and knowledge is shared, solutions are borne, decisions are made, and goals are met. Networks play a role in influencing the spread of ideas and practices. Internet networking particularly is becoming popular, enabling masses to share ideas at across greater distances, faster and often conveniently at lower costs.

The Ridge to Reef regional programme aims to influence environmental benefits at the local, national and global levels. Annex 1 summarizes the objectives, features, required inputs, and technical and human resource needs for the GEF Pacific Ridge to Reef Programme website and associated databases.

### **Website Redevelopment - Fast Facts**

The **Phase 1** of the website redevelopment work was soft launch on World Water Day on March 22. As at 30 August 2020 Pacific R2R website results indicate:

- 3,304 users (target 100). Exceeded 100-user target,
- 25,584 page views,
- 05:22 minutes per session and 4 pages per session
- Bounce rate: 25% (26% - 40% rates excellent)
- 2279 downloads
- 167 countries visited
- Most visited page (in order of frequency of visits):
  - ✓ Resource library
  - ✓ News
  - ✓ Project pages
  - ✓ Capacity development
  - ✓ Science portal

### **Phase 2 work, includes:**

- Science Portal and the Pacific State of the Coast (SoC) system and database launch this week
- Pacific R2R Science Database Training for PMs 2 October
- Follow-up country specific training for in-country GIS specialists
- Online regional and national portals developed
- Roster of national and regional experts and practitioners developed and deployed
- Repository for best practice, lessons learned, and other programme outputs developed
- A virtual Content Management System training September 15-16 for STAR and IW projects to update, maintain and enhance the content of their respective online project pages.
- Launch of the first Pacific R2R Programme newsletter.

## Phase 2 Challenges:

- PMIS development delay due to implementation issues.
- Related WP.03 Status on implementing MTR Recommendations and Management Responses

The Website Redevelopment work ensures that regional and national level outputs of the GEF R2R programme are accessible, supporting our goal to maintain and enhance Pacific Island countries' ecosystem goods and services through integrated approaches to land, water, forest, biodiversity and coastal resource management that contribute to poverty reduction, sustainable livelihoods and climate resilience.

Central to the Knowledge Management and Communications Strategies supporting the programme, it cuts across all areas of programme activity from planning to practice, learning and adaptive management in order to facilitate cooperation, coordination and collaboration.

For the programme, knowledge management and communications play key roles in facilitating planning to policy processes facilitating the adoption of integrated coastal management and integrated water resources management practices supporting sustainable livelihoods and climate resilience among Pacific small island developing states.

One of the core outcomes of the GEF Pacific R2R Programme focuses on the establishment of national and regional platforms for managing information and sharing of best practices and lessons learned from implementation. The programme has adopted an integrated and multi-disciplinary approach to achieving organizational objectives with benefits to the R2R knowledge network that include:

- Cohesion – cooperation, coordination and collaboration
- Accelerated Knowledge Access and Transfer - creation, storing, sharing and application of knowledge
- Costs and Optimization - minimize costs of organizing, finding and leveraging knowledge

Providing the Pacific R2R Network with access to new documents, technical data and information, project related news and results, professional R2R contacts and expertise, members of knowledge network will enable them to effectively contribute and participate in achieving a common goal.

## Annex 1

Website Objectives	Features to Maintain and Develop	Required Inputs (Content)	Hardware/Operational Needs (Regional)
<ol style="list-style-type: none"> <li>1. Ensure that all regional and national level outputs of the GEF R2R programme are accessible online, and can be easily searched and downloaded;</li> <li>2. Maintain and continuously update the database of contact details for all individuals and organizations involved in GEF R2R programme implementation;</li> <li>3. Maintain and expand the online network of institutional websites relevant to GEF R2R implementation;</li> <li>4. Establish and regularly update information pages about that status of R2R programme implementation and results;</li> <li>5. Provide timely information to project partners about project progress, status and events;</li> <li>6. Create and regularly update knowledge repositories of outputs from R2R activities, including best practice;</li> <li>7. Extend and ensure syndication of regional, national, and site level news to project partners;</li> <li>8. Increase the online sharing of information between/among project network members;</li> <li>9. Enhance the online visibility of R2R project activities and outputs; and to</li> <li>10. Facilitate efficient online compilation and sharing of information/data.</li> </ol>	<p><b>Information/Data Management</b></p> <ul style="list-style-type: none"> <li>• Regional web-based GIS for compilation and update of site-based/coastal area data (including inter-linked meta database)</li> <li>• Web-based analytical tool for assembly and analysis of data on programme status/results (including dash-boarding tool and geospatial presentation of programme results)</li> </ul> <p><b>Knowledge Capture and Sharing</b></p> <ul style="list-style-type: none"> <li>• 14 national project information pages</li> <li>• Online catalogue of best practice management approaches and technologies</li> <li>• Online register of coastal practitioners</li> <li>• Searchable repository of policy docs</li> <li>• Online database of past and present projects and programmes</li> <li>• E-forum for informal information and knowledge exchange</li> <li>• Knowledge repositories (publications, documentaries and instructional films etc)</li> </ul> <p><b>Training and Capacity Building</b></p> <ul style="list-style-type: none"> <li>• Training portal for Result Management of the R2R programme (including online certification)</li> <li>• Training portal for R2R post-graduate training programme (50+ participants)</li> </ul> <p><b>Outreach</b></p> <ul style="list-style-type: none"> <li>• Overarching website for the R2R programme (include best practice SEO)</li> <li>• Web-based competitions for awareness</li> <li>• Social media integration for syndication of programme news/info</li> <li>• R2r Google Earth layer (or equivalent)</li> </ul> <p><b>Project Management</b></p> <ul style="list-style-type: none"> <li>• Cloud-based project reporting (quarterly)</li> <li>• Online campaigns, including tools and mechanisms for resource mobilization</li> <li>• Analytics</li> </ul>	<p><b>Regional Co-ordination</b></p> <ul style="list-style-type: none"> <li>• Optimization/uploading of documentation and other project outputs</li> <li>• Regional news and screening of national news contributions</li> <li>• Periodic update (monthly) of partner contacts database and e-mailing lists</li> <li>• Update of project events calendar</li> <li>• Publish and email, e-newsletter (quarterly)</li> <li>• Periodic (weekly) update of regional information repositories (documents, multi-media, training, awareness)</li> <li>• Stimulation of e-fora for discussions</li> </ul> <p><b>National Execution</b></p> <ul style="list-style-type: none"> <li>• Establish and maintain links from websites of national orgs to R2R website</li> <li>• Contributions of project news, information, required inputs to databases</li> </ul> <p><b>Individual National Programme Managers and Coordinators</b></p> <ul style="list-style-type: none"> <li>• Collation and upload of new information and data (meta-data, policy documents, project information) directly to website</li> <li>• Upload of national outputs (publications, multi-media etc) to site</li> <li>• Participation in e-fora</li> </ul>	<p><b>Web-Hosting</b></p> <ul style="list-style-type: none"> <li>• Commercial high capacity web-hosting in secure data centre with technical support. PHP5, CGI, SSI capabilities Approximately 100 GB disk space. Min 100GB data transfer per month. Min. 300GB disk space on separate disk for back ups</li> </ul> <p><b>Maintenance of the website – Content Management System</b></p> <ul style="list-style-type: none"> <li>• Upgrades of selected content management system and supporting software modules as required (-40 upgrades/yr)</li> </ul> <p><b>Data management and security</b></p> <ul style="list-style-type: none"> <li>• Full daily back-up on server (automated).</li> <li>• Back-up downloaded weekly and stored on hard disk and DVD (DVD checked with MD5 has to ensure no data loss).</li> <li>• Back-up deployed and maintained on test server (monthly) to ensure no data corruption.</li> </ul> <p><b>Support/Capacity Building</b></p> <ul style="list-style-type: none"> <li>• Update user manuals and conduct training as required.</li> <li>• Assist web users online.</li> </ul>

Table 1: Summary of objectives, features, required inputs, and technical and human resource needs for the GEF Pacific Ridge to Reef Programme website and associated databases, endorsed by RSC 1 (2016) as the basis for the website redevelopment and associated online tools.