

Material List Drawing	Pohnpei Model From pm-2-1	To pm 2-5	Estimate 9/8/2017					Estimate 6/26/2013		
			Unit Price	Amount	Source	Unit Price	Amount	Source		
No	Description	Model others	Quantity	Unit						
<b>1</b>	<b>Dig Ground construction</b>									
*	Coral sand		30	yd3	15.00	450.00	Ace	15.00	450.00	Ace
	Delivery fee (sand)		2	time	60.00	120.00	Ace	65.00	130.00	Ace
<b>2</b>	<b>Concrete construction</b>									
	Concrete		5.5	yd3		0.00			0.00	
	Cement	7bag/yd3	36	bag	11.54	415.44	Ace	8.52	306.72	Ace
	Rock		3	yd3	75.00	225.00	Apsco	42.00	126.00	Apsco
	Delivery fee (rock)	lyd3/yd3	1	time	75.00	75.00	VCS	45.00	45.00	Apsco
	White sand	lyd3/yd3	3	yd3	45.00	135.00	VCS	35.00	105.00	Ace
	Delivery fee (sand)		1	time	60.00	60.00	VCS	45.00	45.00	Ace
<b>3</b>	<b>Concrete block construction</b>									
	Concrete block	16inch*8inch*4inch	506	piece	1.25	632.50	EMC	1.23	622.38	Ace
	sales tax		1	set	0.00	0.00	EMC	7.90	7.90	Ace
	SUV tax		1	set	0.00	0.00	EMC	1.58	1.58	Ace
	Delivery fee (block)		1	time	0.00	0.00	EMC	45.00	45.00	Ace
<b>4</b>	<b>Rebar construction</b>									
	Rebar/2	d=1/2 L=20ft	47	piece	9.44	443.68	Ace	8.99	422.53	Ace
<b>5</b>	<b>Wood construction</b>									
	lumber	2inch*6inch*16ft	16	piece	26.24	419.84	Ace	19.99	319.84	Ace
	lumber	4inch*4inch* 16ft	1	piece	47.24	47.24	Ace	42.99	42.99	Ace
	lumber	2inch*4inch*16ft	24	piece	14.69	352.56	Ace	12.99	311.76	Ace
	PVC pipe	4 inch 20ft	3	piece	73.49	220.47	Ace	69.99	209.97	Ace
<b>6</b>	<b>Iron Bolt Nut Nail</b>									
	Rod (ø=3/8 L=3 ft)	52107 1 ft cut	4	piece		0.00			0.00	Ace
	Nut	57309	24	piece		0.00			0.00	
	Beam joint	5386727	0	piece		0.00		1.49	0.00	
	Beam joint	55773	10	piece	1.29	12.90	Ace	1.29	12.90	Ace
	Pillar support 2	conector	5	piece	7.29	36.45	Ace	7.29	36.45	
	Beam conector	53118	20	piece	0.79	15.80	Ace	0.79	15.80	
	nail	3 inch	5	lb	1.65	8.25	Ace	1.59	7.95	Ace
<b>7</b>	<b>Roof construction</b>									
	Tin	32 inch*8ft	30	piece	17.84	535.20	Ace	16.99	509.70	Ace
	roof nail (new item 2017)		10	lbs	2.99	29.90	Ace		0.00	
<b>8</b>	<b>Water construction</b>									
	Plastic pipe	d=1/2 L=20ft	1	piece	5.76	5.76	Ace	5.49	5.49	Ace
	tee	N=43110	4	piece	0.49	1.96	est	0.49	1.96	Ace
	tee	N=45621	4	piece	0.59	2.36	est	0.49	1.96	
	Pig Nipple	1/2 inch 70015451	4	piece	10.99	43.96	Ace	7.99	31.96	Ace
	Gate Valve	1/2 inch plastic	1	piece	2.99	2.99	Ace	2.99	2.99	Ace
<b>9</b>	<b>Gate, Fence</b>									
	Rebar	d=1/2 L=20ft	16	piece	9.44	151.04	Ace	8.99	143.84	Ace
	lumber	4inch*4inch* 16ft	2	piece	47.24	94.48	Ace	42.99	85.98	Ace
		2inch*4inch* 16ft	1	piece	14.69	14.69	Ace	12.99	12.99	Ace
	Rod (ø=3/8 L=3 ft)	devide 6piece	5	piece		0.00	Ace		0.00	Ace
	Nut, Washer 3/8		26	set		0.00			0.00	
<b>Total</b>						<b>4,552.47</b>			<b>4,061.64</b>	
<b>*** 3</b>	<b>pig pen common use material</b>									
	lumber	2inch*2inch*16ft	25	piece	7.99	199.75	Ace	7.99	199.75	Ace
	Plywood	4ftx8ft 1/2"	5	piece	47.99	239.95	Ace	44.99	224.95	Ace
<b>Total</b>						<b>439.70</b>			<b>424.70</b>	

\* Coral sand volime is chaned by construction condition. These materials will be used 3 times

\*\*\* These materials will be used 3 times  
After construction it will be used as compost fence.

# Dry Litter Pig Pen Pohnpei Model

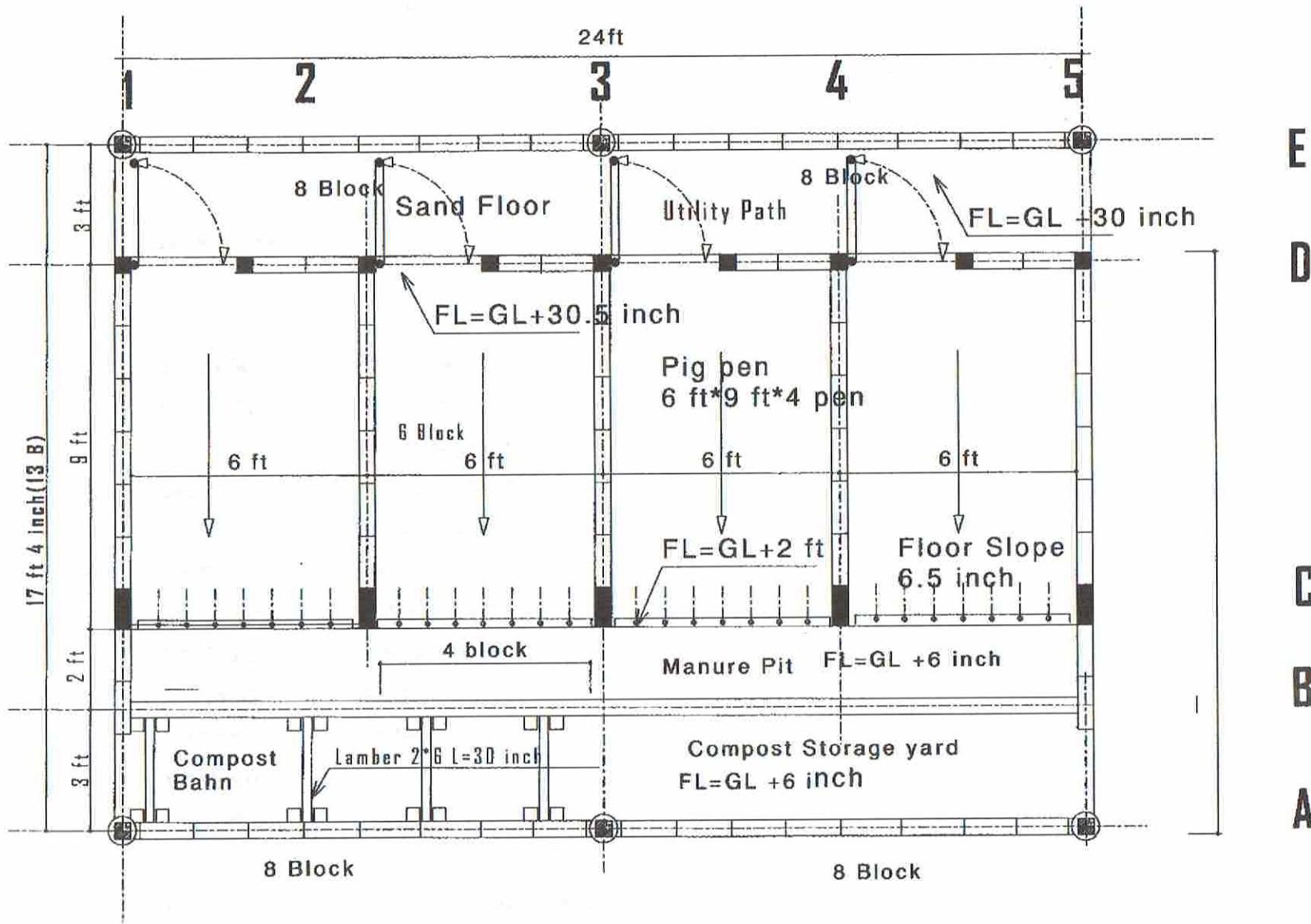
Date 2012/08/30

## Drawing No

PM-04-00	Total Plan
PM-04-01	Out Look
PM-04-02	Vertical
PM-04-03	Base Block Plan
PM-04-03-1	Concret Block on the Floor
PM-04-04	Iron Works
PM-04-05	Wood Structure Plan
PM-04-06	Wood Structure Vertical
PM-04-07	Block Base Detail
PM-04-08	Roofing Plan
PM-04-09	Water Line
PM-04-10	

## Material List

COM FSM Pohnpei Campus CES

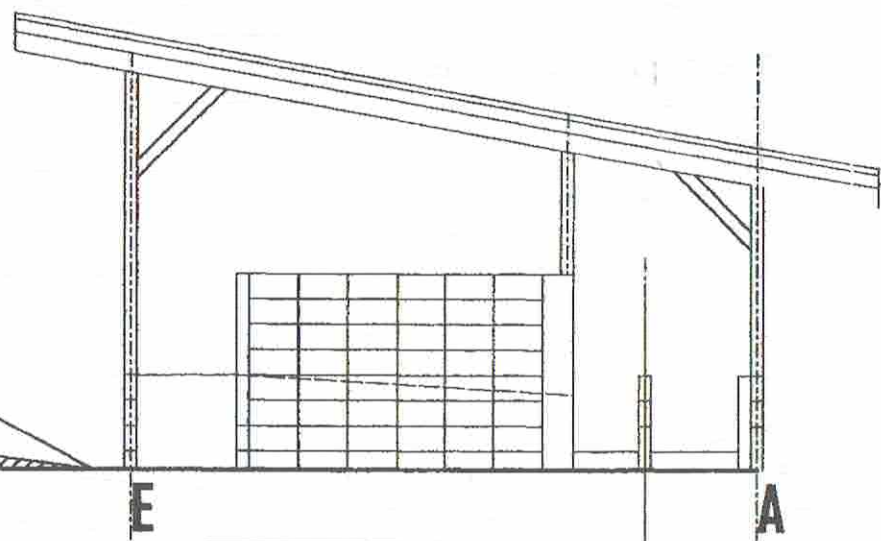
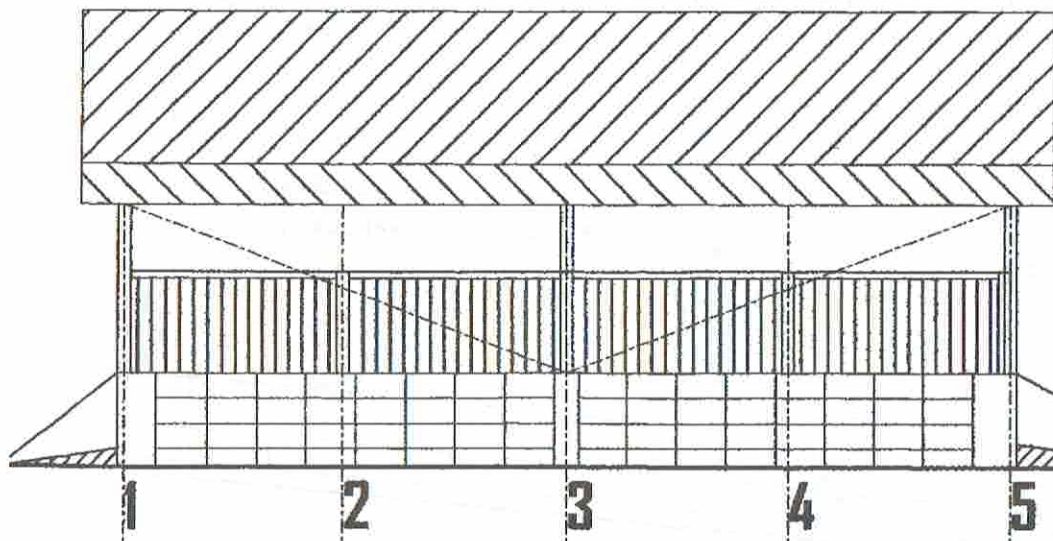
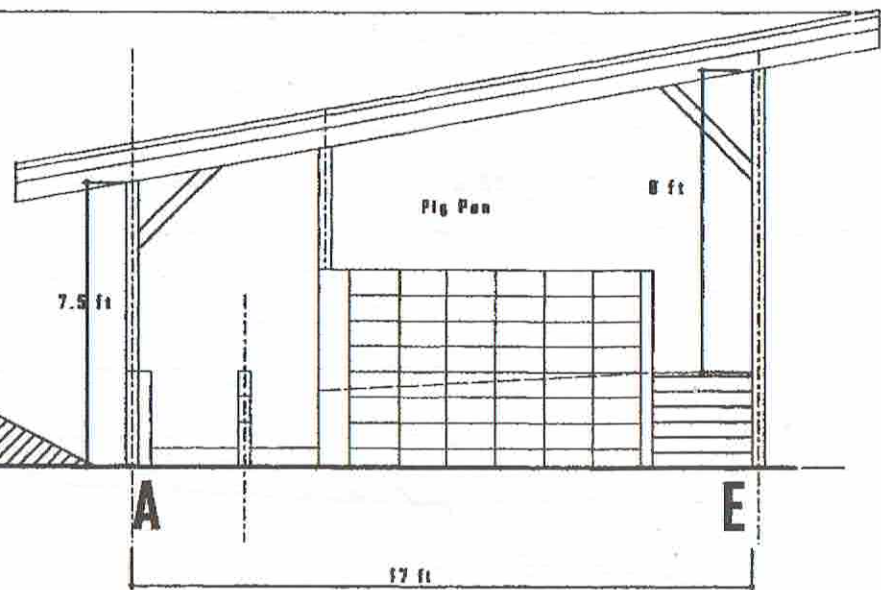
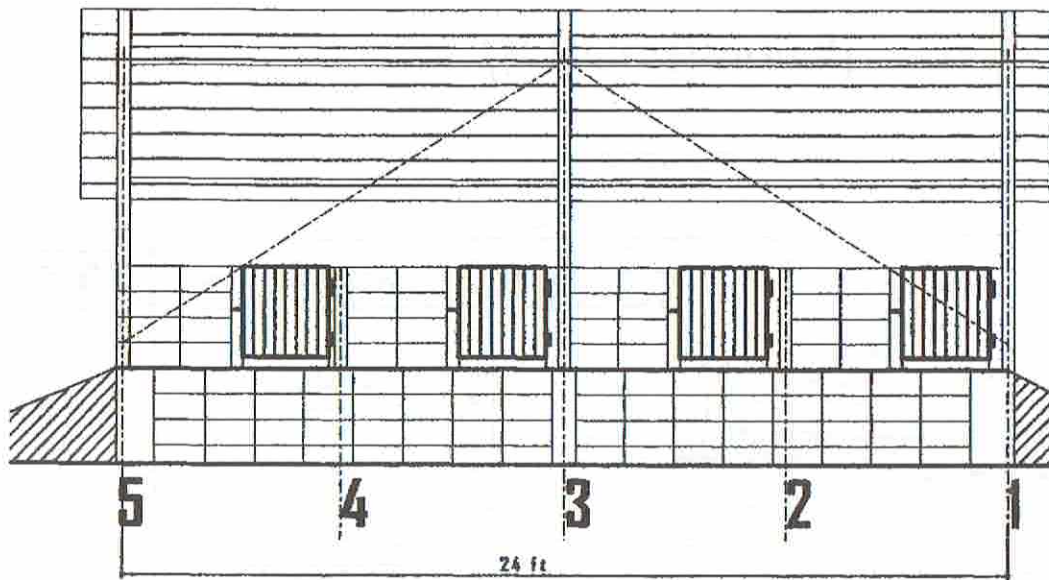


Floor concret thickness 4 inch

Concret block 8\*16 inch thickness 4 inch

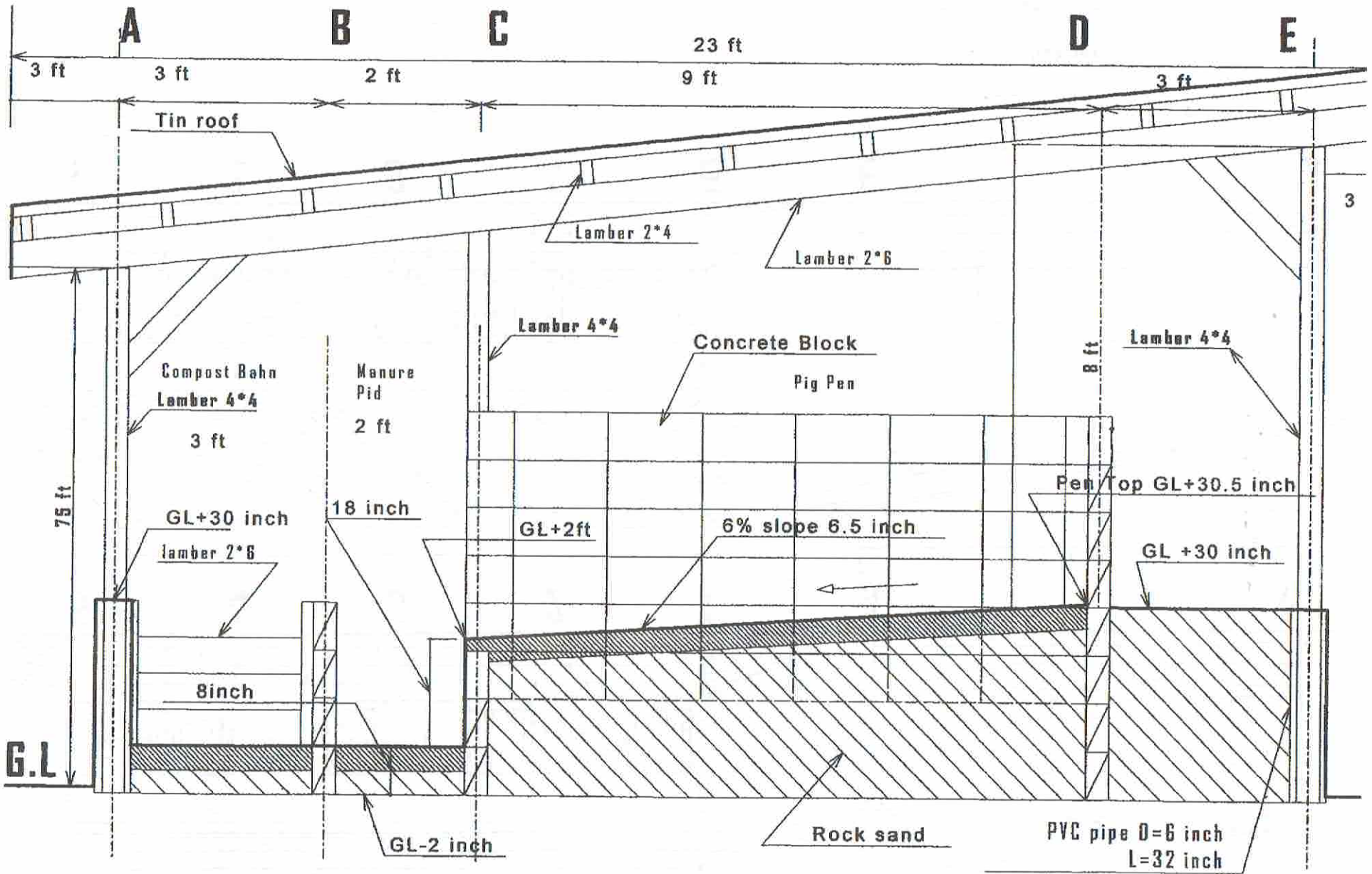
Total Plan

Dry Litter Pig Pen		
Total Plan		
No	PM- 04-00	S=Non



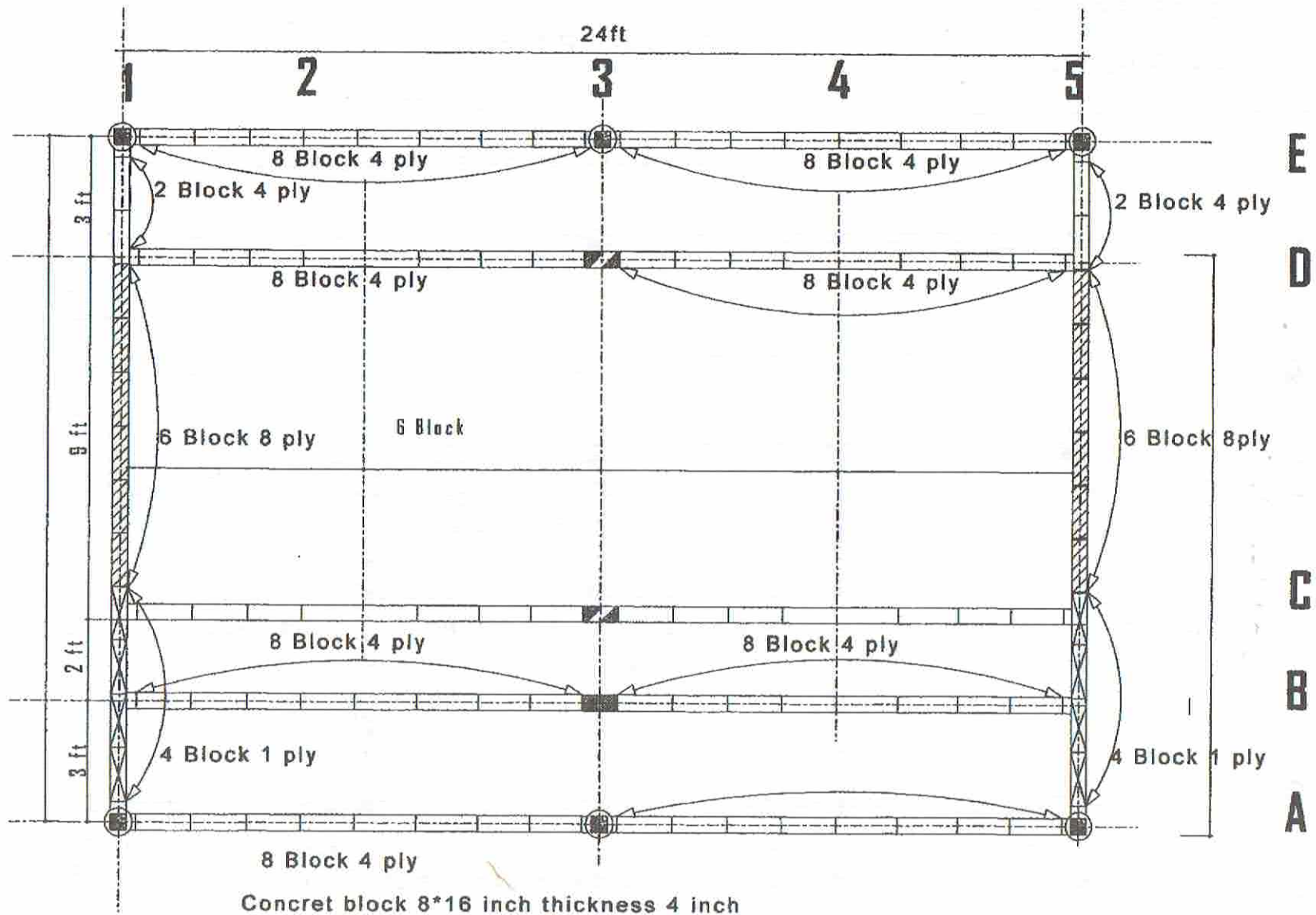
Dry Litter Pig Pen		
Outlook		
No	MP- 04-01	S=Non





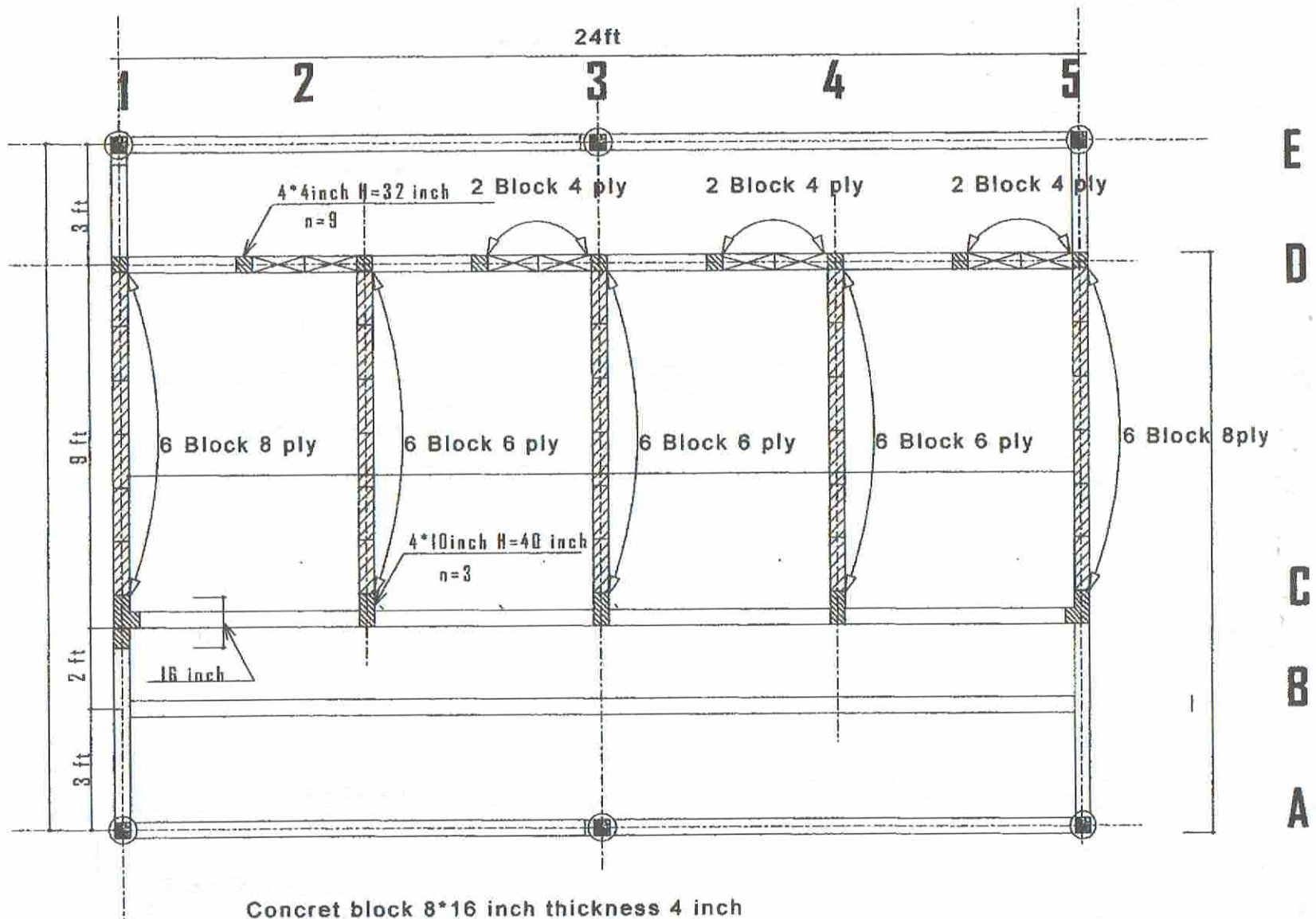
## Virtical General

Dry Litter Pig Pen		
Virtical General		
No	MP- 04-02	S=Non



Base Block Plan

Dry Litter Pig Pen		
Base Block Plan		
No	PM- 04-03	S=Non



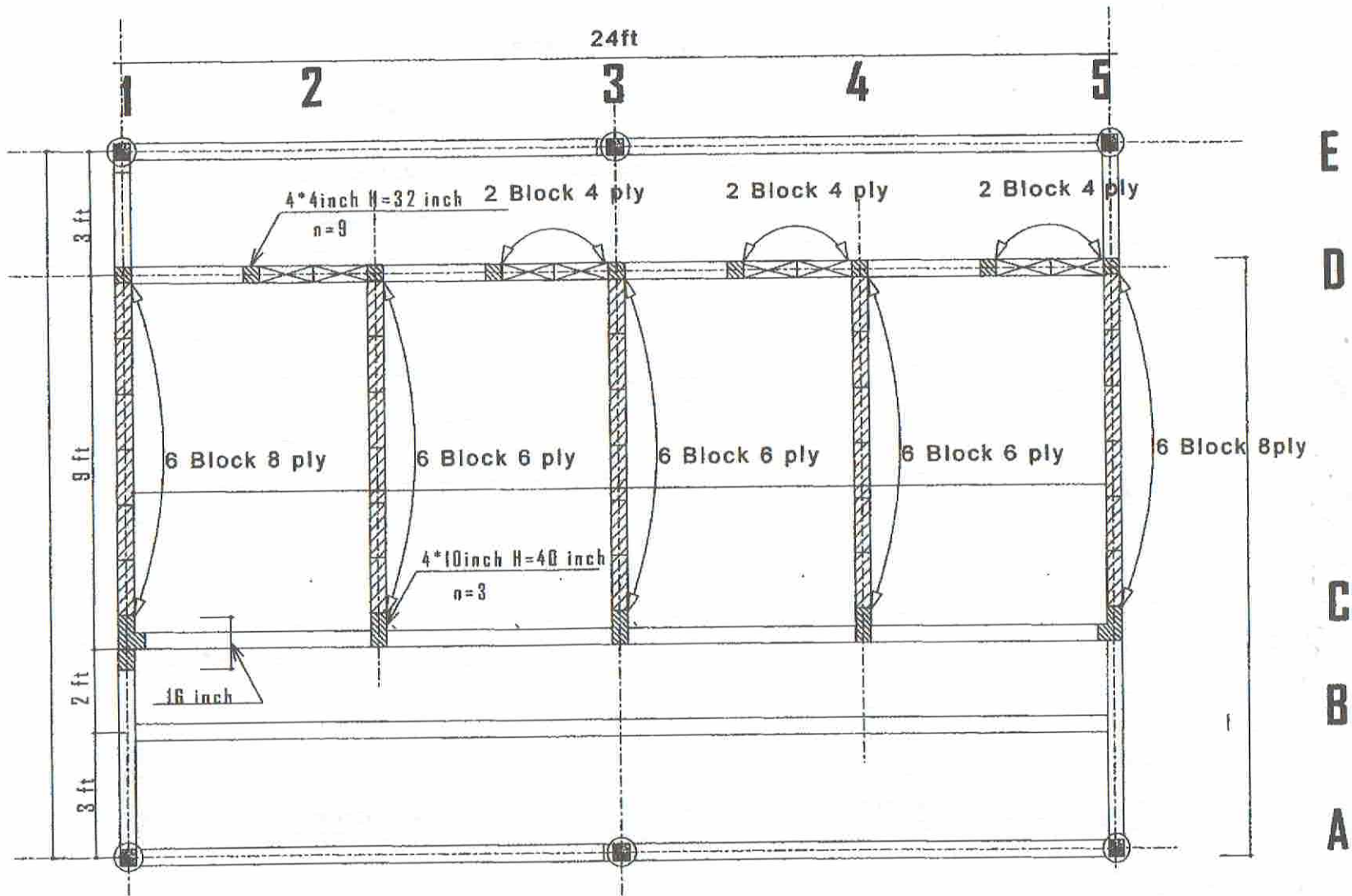
Concret block 8\*16 inch thickness 4 inch

Block base level GL-2 inch

Base Block Plan

Dry Litter Pig Pen		
Block Plan Over Floor		
No	PM-04-03-1	S=Non





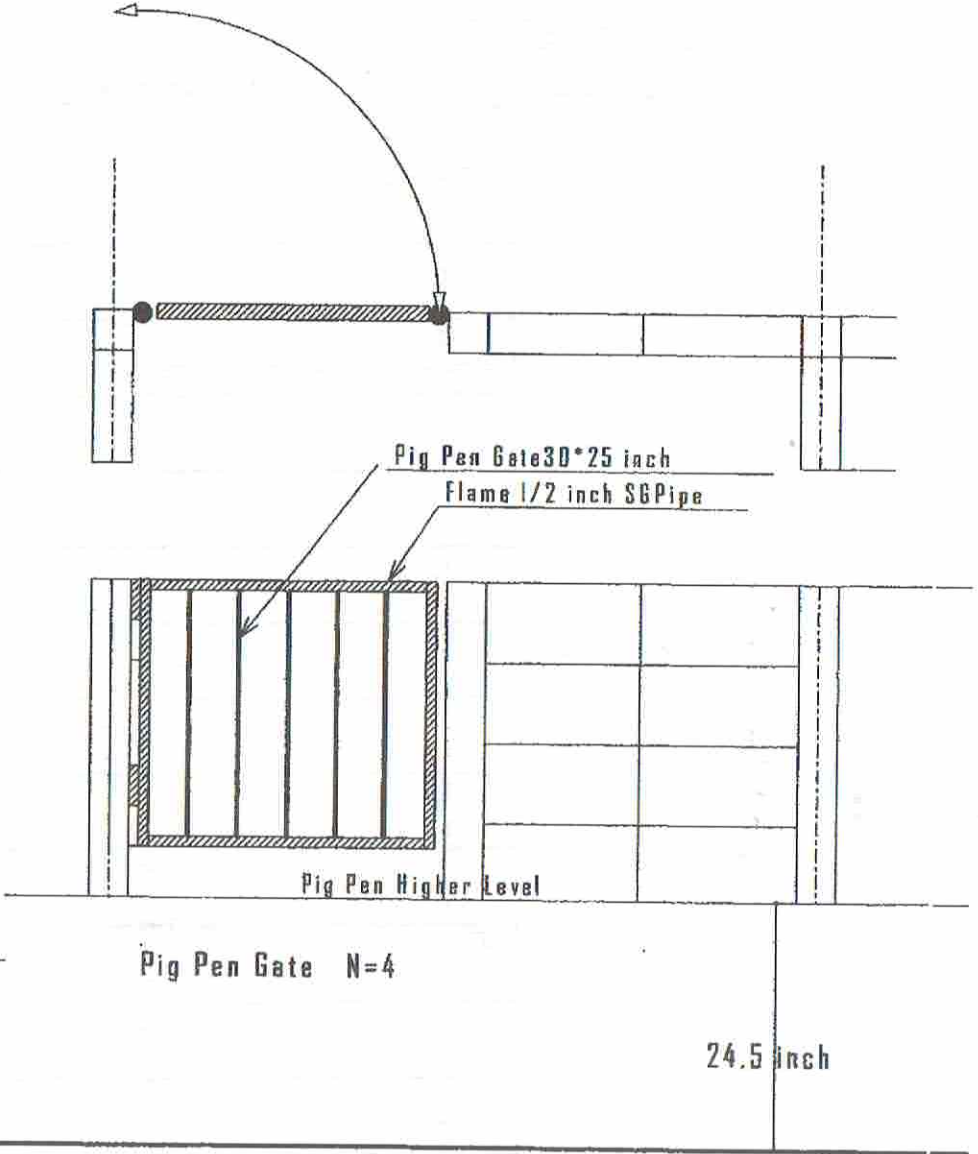
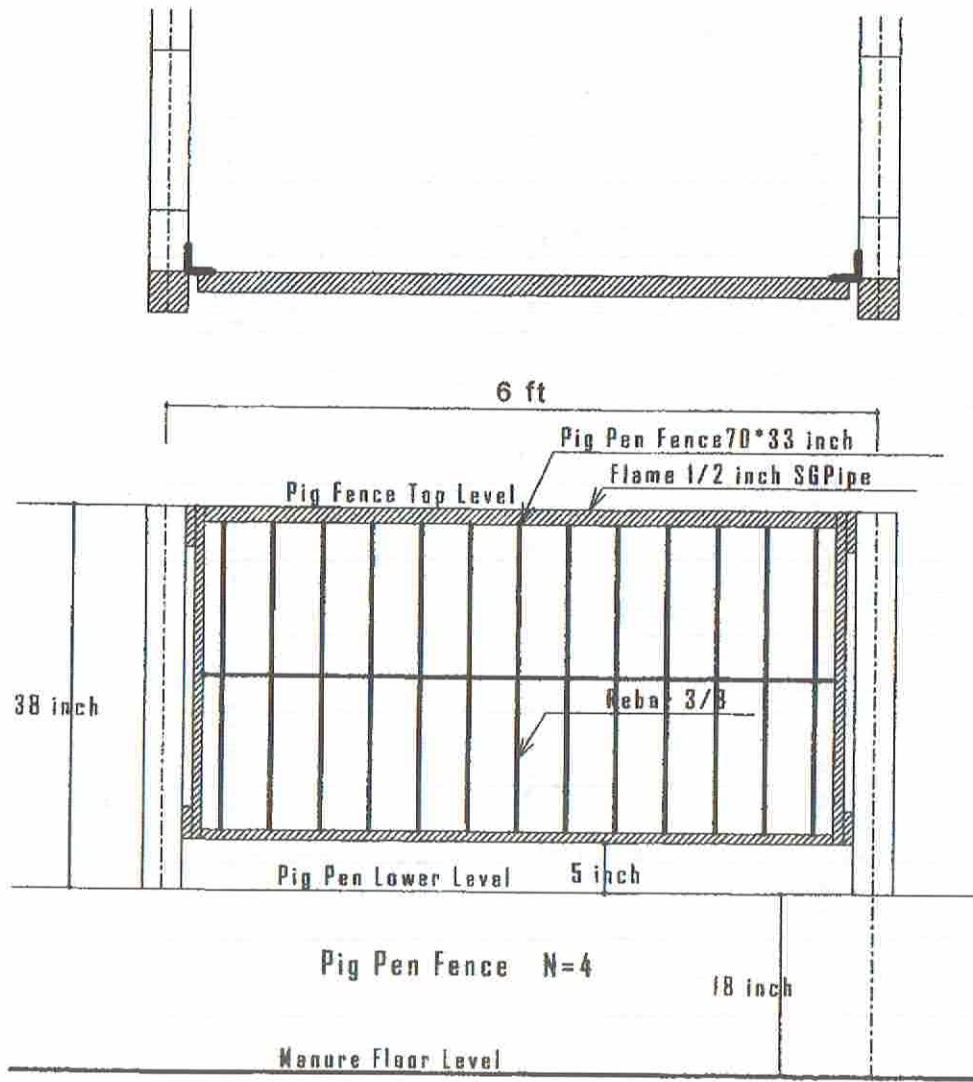
Concret block 8\*16 inch thickness 4 inch

Block base level GL-2 inch

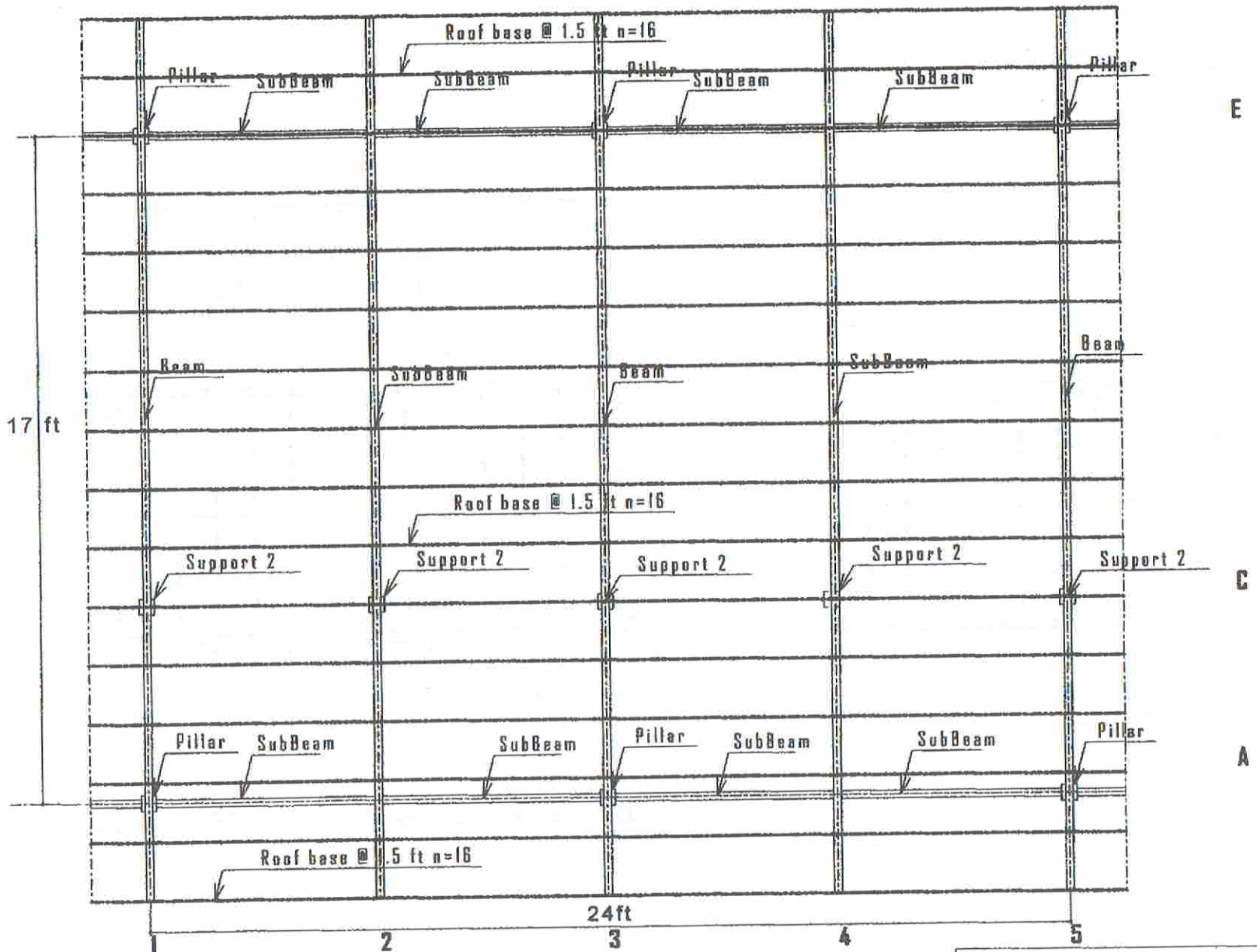
### Base Block Plan

Dry Litter Pig Pen		
Block Plan Over Floor		
No	PM- 04-03-1	S=Non





Dry Litter Pig Pen		
Iron Pig fence and Gate		
No	MP- 04-04	S=Non



Pillar 4\*4

Beam 2\*6

Support 1 2\*4

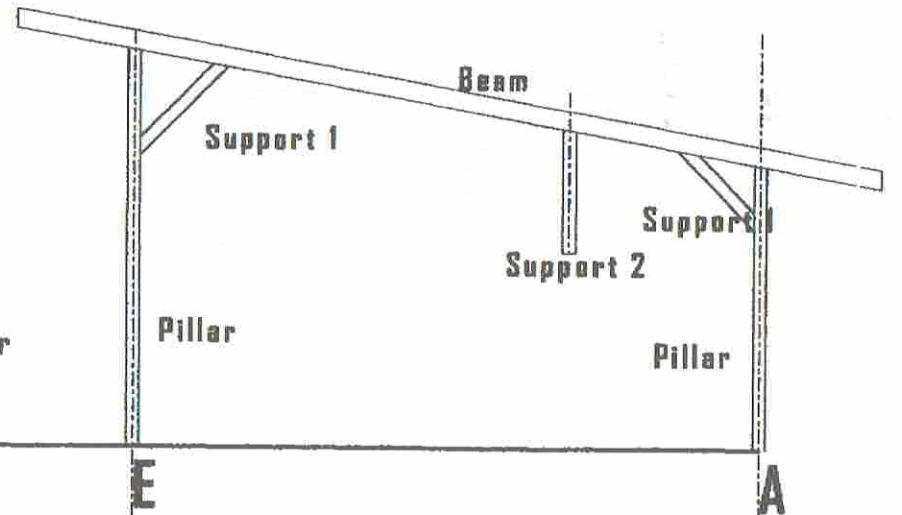
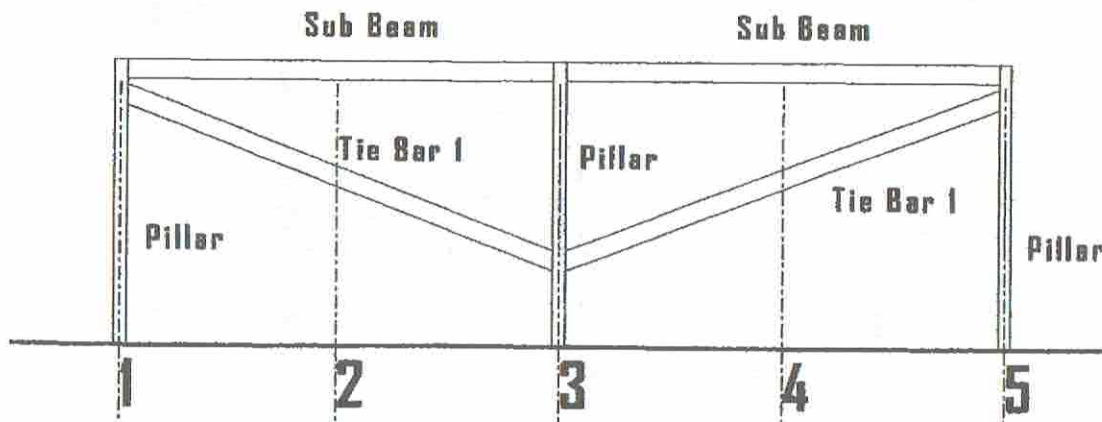
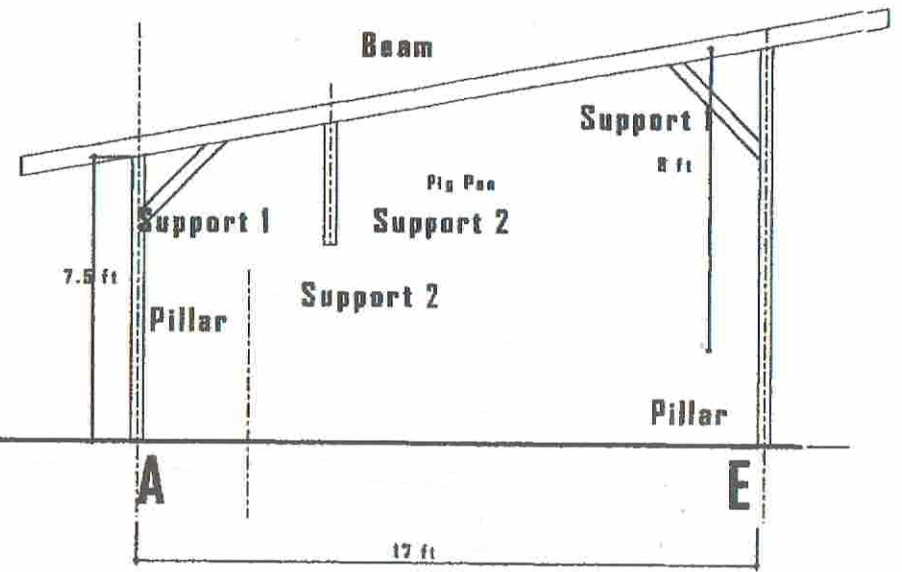
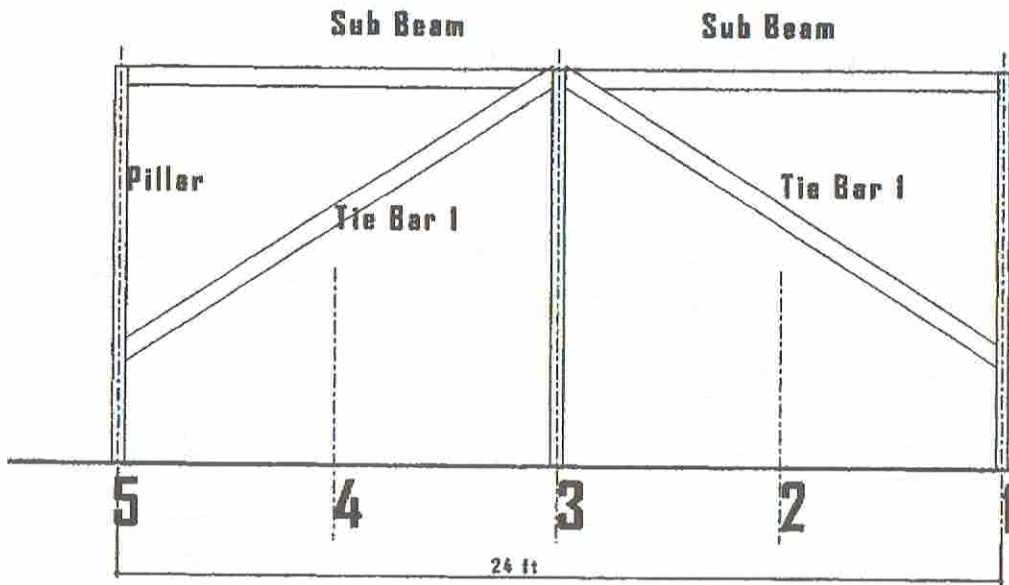
Sub Beam 2\*6

Tie Bar 1 2\*6

Support 2 4\*4

Roof Base 2\*4

Dry Litter Pig Pen		
Wood Structure Plan		
No	MP- 04-05	S=Non



Pillar 4\*4

Beam 2\*6

Support 1 2\*4

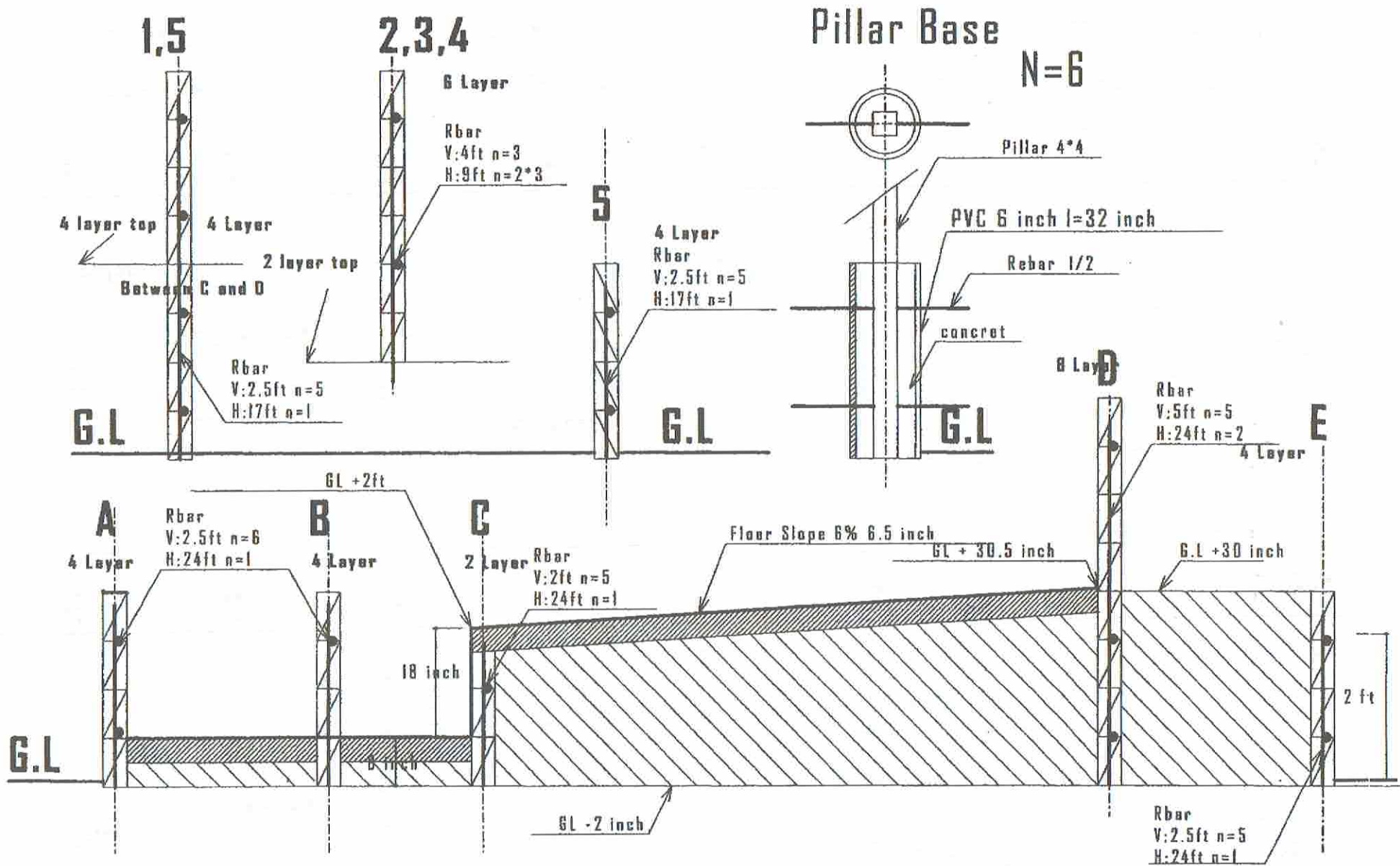
Sub Beam 2\*6

Tie Bar 1 2\*6

Support 2 4\*4

Dry Litter Pig Pen		
Wood Structure Vertical		
No	MP- 04-06	S=Non

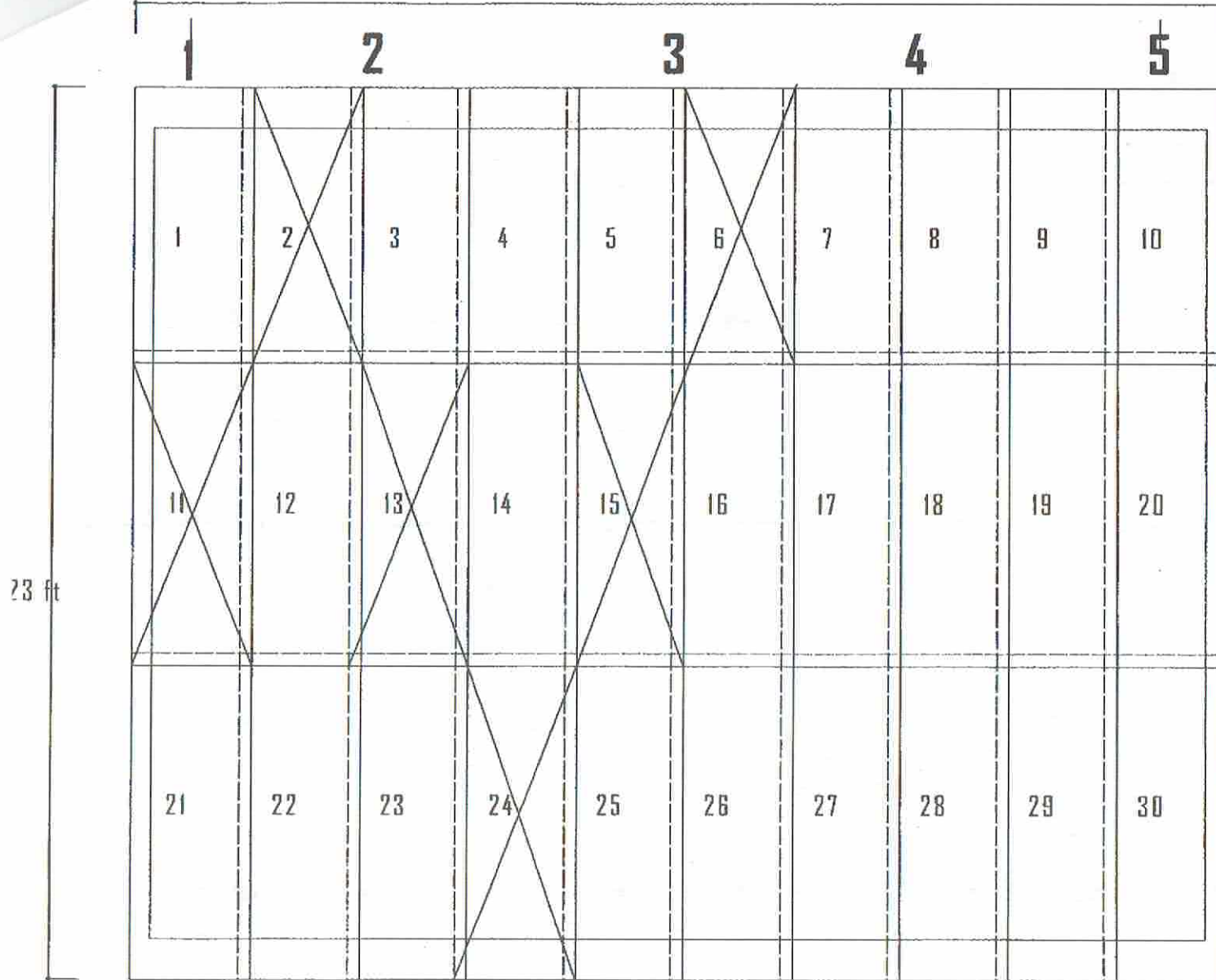




Vertical General

Dry Litter Pig Pen		
Block Floor Base Detail		
No	MP- 04-07	S=Non



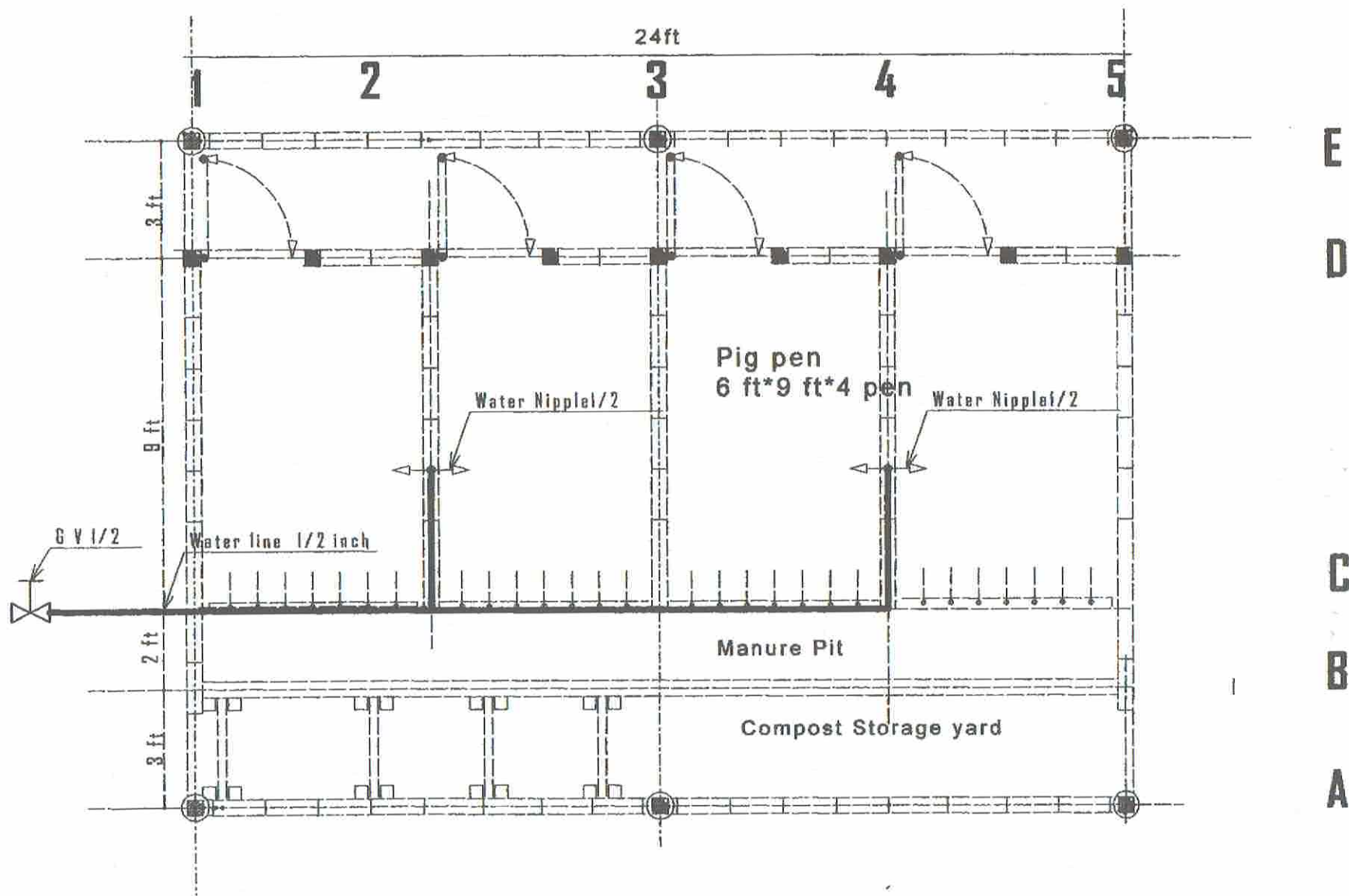


E  
D  
C  
B  
A

Tin roof 32 inch\*8 ft n=30

Roof Plan

Dry Litter Pig Pen		
Roof Plan		
No	MP 04-8	S=Non



Water line

Dry Litter Pig Pen		
Water Line		
No	PM- 04-09	S=Non