



GEF IW R2R/ RSC.4/ 4
Date: 28th July 2019
Original: English

Fourth Regional Steering Committee Meeting for the GEF Pacific Regional International Water Ridge to Reef Project entitled:
Ridge to Reef – Testing the Integration of Water, Land, Forest & Coastal Management to Preserve Ecosystem Services, Store Carbon, Improve Climate Resilience and Sustain Livelihoods in Pacific Island Countries

Nadi, Fiji, 30th to 31st July 2019

STATUS OF THE GEF PACIFIC INTERNATIONAL WATERS R2R PROJECT

The attached document reports on the status of the Pacific Regional International Waters Ridge to Reef Project as of June 30, 2019. This report provides an overview of the status of the development outcomes, issues and opportunities, including financial utilisation.

Annex 1:

Regional International Waters

Ridge to Reef Project Overview and Status

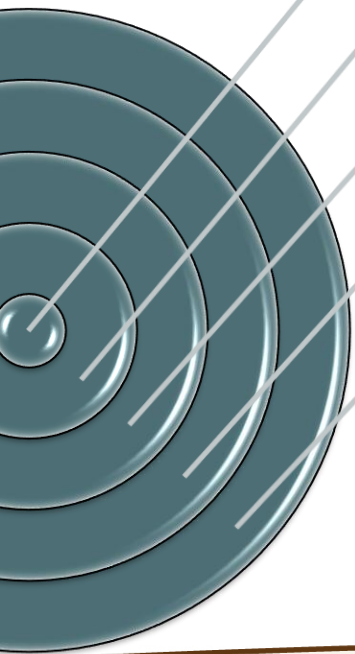


Pacific Islands Ridge to Reef National Priorities – Integrated water, land, forest and coastal management to preserve biodiversity, ecosystem services, store carbon, improve climate resilience and sustain livelihoods

Regional International Waters Ridge to Reef Project Overview and Status

Peter Cusack – Regional Program Coordinator
4th RSC Meeting, Tanoa International Hotel, Nadi, Fiji





GEF Pacific R2R Program overview

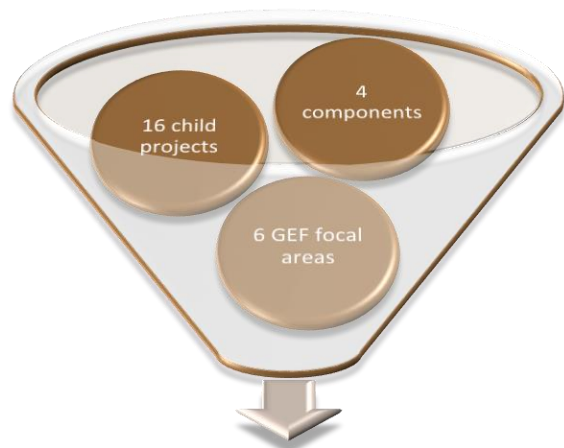
Regional IW R2R project profile

Status of development outcomes

Issues, risks and opportunities

Financial status and forecast

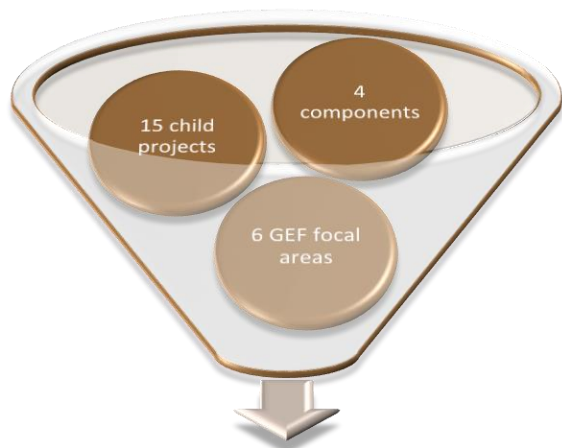




Program Title

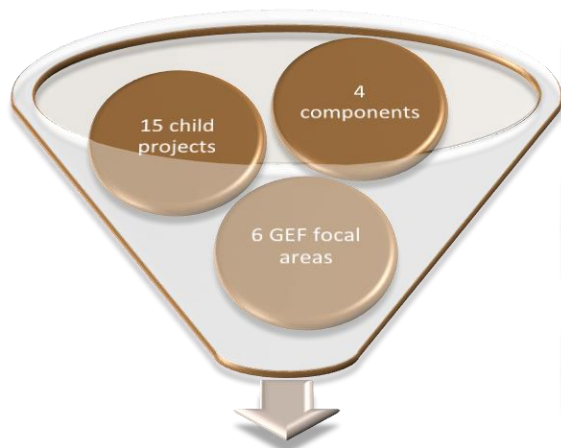
Pacific Islands Ridge to Reef National Priorities - Integrated Water, Land, Forest & Coastal Management to Preserve Ecosystem Services, Sequester Carbon, Improve Climate Resilience and Sustain Livelihoods





Program objectives

To maintain and enhance **Pacific Island Countries'** ecosystem goods and services (provisioning, regulating, supporting and cultural) through **integrated approaches** to land, water, forest, biodiversity and coastal resource management that contribute to **poverty** reduction, **sustainable livelihoods** and **climate resilience**



Program components

Component 1

National GEF STAR funded Multi-focal Area Ridge-to-Reef Demonstrations in all Pacific Island Countries

Component 2

Improved Governance for Integrated, Climate Resilient Land, Water, Forest and Coastal Management

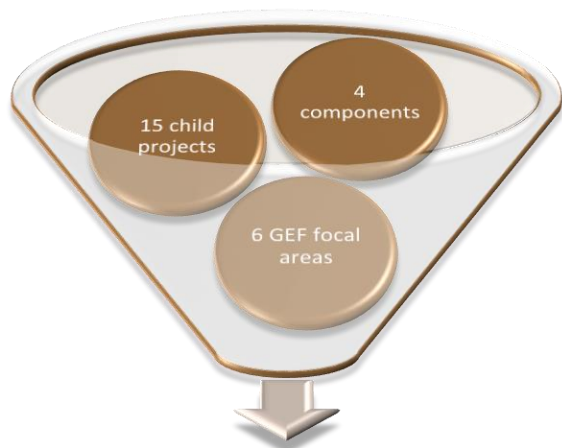
Component 3

Regional and National/Local Ridge-to-Reef Indicators, Monitoring & Evaluation & Knowledge Management

Component 4

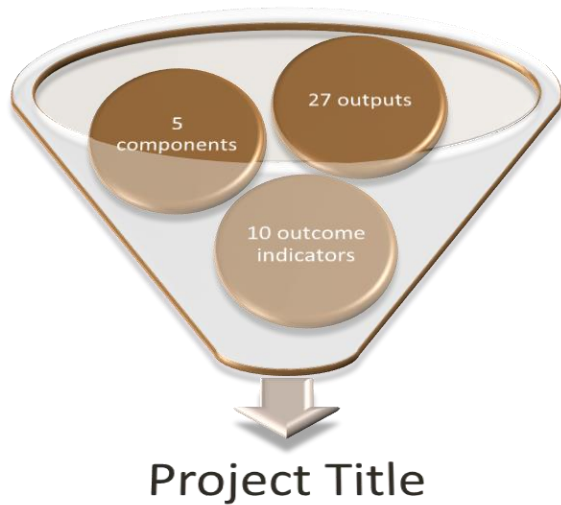
Regional Program Coordination



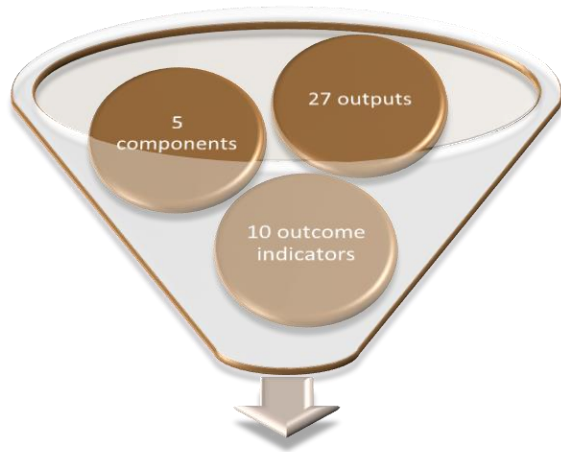


Program facts

- ❑ **Fund Source:** Global Environmental Facility
- ❑ **Lead GEF IA:** United Nations Development Program
- ❑ **Other GEF Agency:** UN Environment & FAO
- ❑ **Partners:** 14 Pacific Island Countries & The Pacific Community (SPC)
- ❑ **Total budget:** USD 90.4 million
- ❑ **Duration:** 60 months

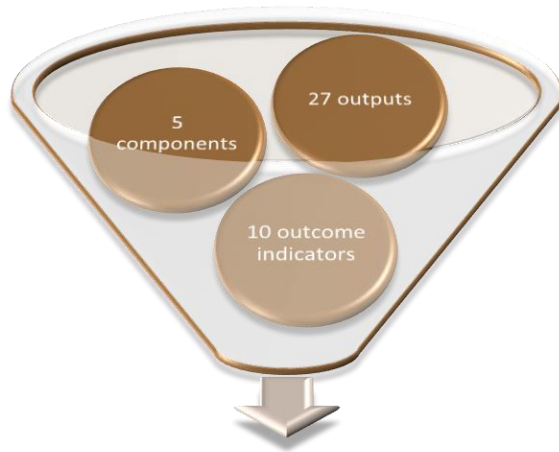


Ridge to Reef: Testing the integration of water, land, forest and coastal management to preserve ecosystem services, store carbon, improve climate resilience and sustain livelihoods in Pacific Island Countries



Project objectives

To **test** the mainstreaming of **Ridge to Reef, climate resilient approaches** to integrated land, water, forest and coastal management in the **Pacific Island Countries** through strategic planning, capacity building and piloted local actions to **sustain livelihoods** and preserve **ecosystem services**



Project components

Component 1

National Demonstrations to support R2R ICM/IWRM approaches for island resilience & sustainability

Component 2

Island-based investments in human capital & knowledge to strengthen national & local capacities for R2R ICM/IWRM approaches, incorporating CCA

Component 3

Mainstreaming of R2R ICM/IWRM approaches into national development planning

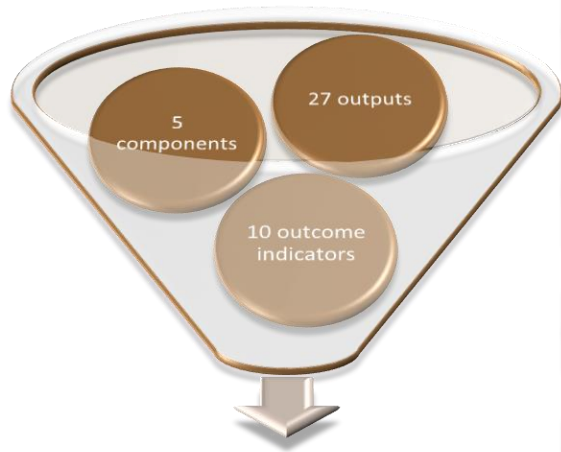
Component 4

Regional & national R2R indicators for reporting, monitoring & adaptive management & knowledge management

Component 5

Ridge to Reef regional & national coordination





Project outcomes

Component 1

National Demonstrations to support R2R ICM/IWRM approaches for island resilience & sustainability

Outcome 1.1

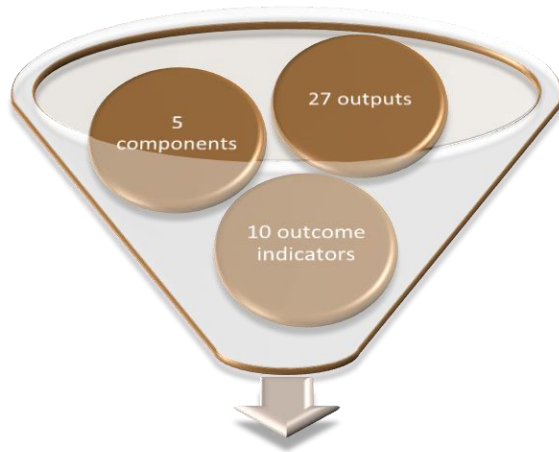
Successful pilot projects testing innovative solutions involving linking ICM, IWRM & CCA (linked to STAR via larger Pacific R2R network)

Outcome 1.2

National diagnostic analysis for ICM conducted for prioritizing and scaling-up key ICM/IWRM reforms and investments

Outcome 1.3

Multi-stakeholder leader roundtable networks established for strengthened 'community to cabinet' ICM/IWRM



Project outcomes

Component 2

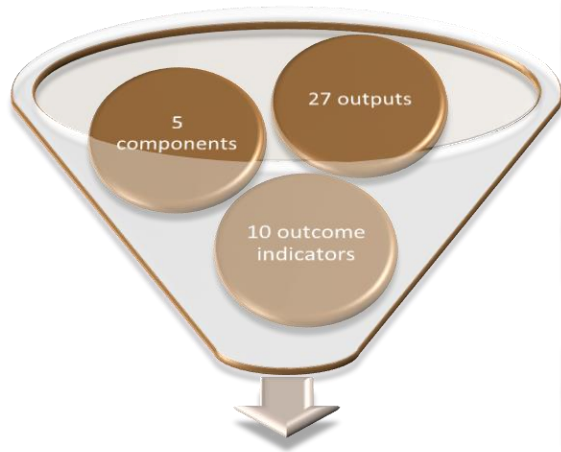
Island-based investments in human capital & knowledge to strengthen national & local capacities for R2R ICM/IWRM approaches, incorporating CCA

Outcome 2.1

National & local capacity for ICM & IWRM implementation build to enable best practice in integrated land, water, forests & coastal management & CCA

Outcome 2.2

Incentive structures for retention of local R2R expertise & inter-governmental dialogue on HR needs for ICM/IWRM initiated



Project outcomes

Component 3

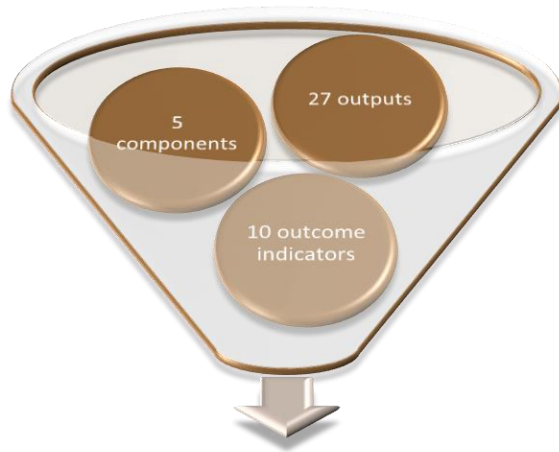
Mainstreaming of R2R ICM/IWRM approaches into national development planning

Outcome 3.1

National and regional strategic action frameworks for ICM/IWRM endorsed nationally and regionally

Outcome 3.2

Coordinated approaches for R2R integrated land, water, forests & coastal mgt. & CCA achieved in 14 Pacific Island Countries



Project outcomes

Component 4

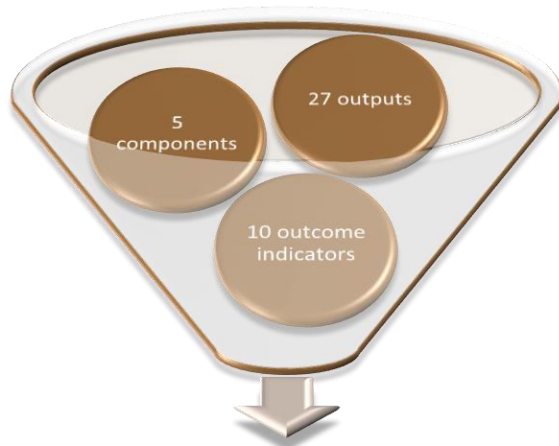
Regional & national R2R indicators for reporting, monitoring & adaptive management & knowledge management

Outcome 4.1

National & regional formulation & adoption of integrated & simplified results frameworks for integrating multi-focal projects

Outcome 4.2

National & regional platforms for managing information & sharing of best practices & lessons learned in R2R established



Project outcomes

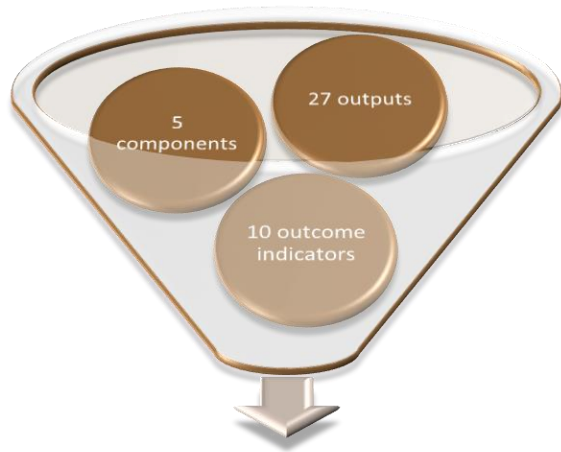
Component 5

Ridge to Reef regional & national coordination

Outcome 5.1

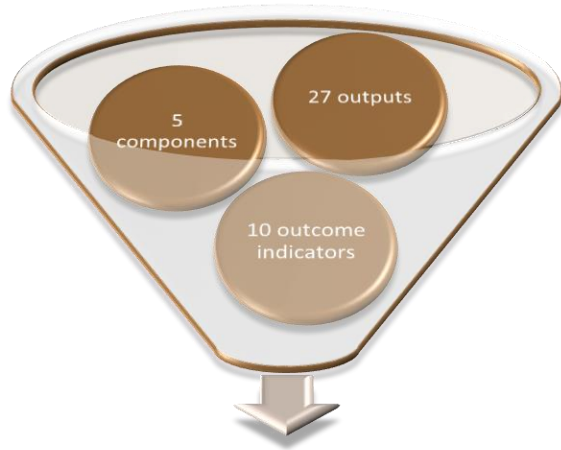
Effective program coordination of national & regional Ridge to Reef projects



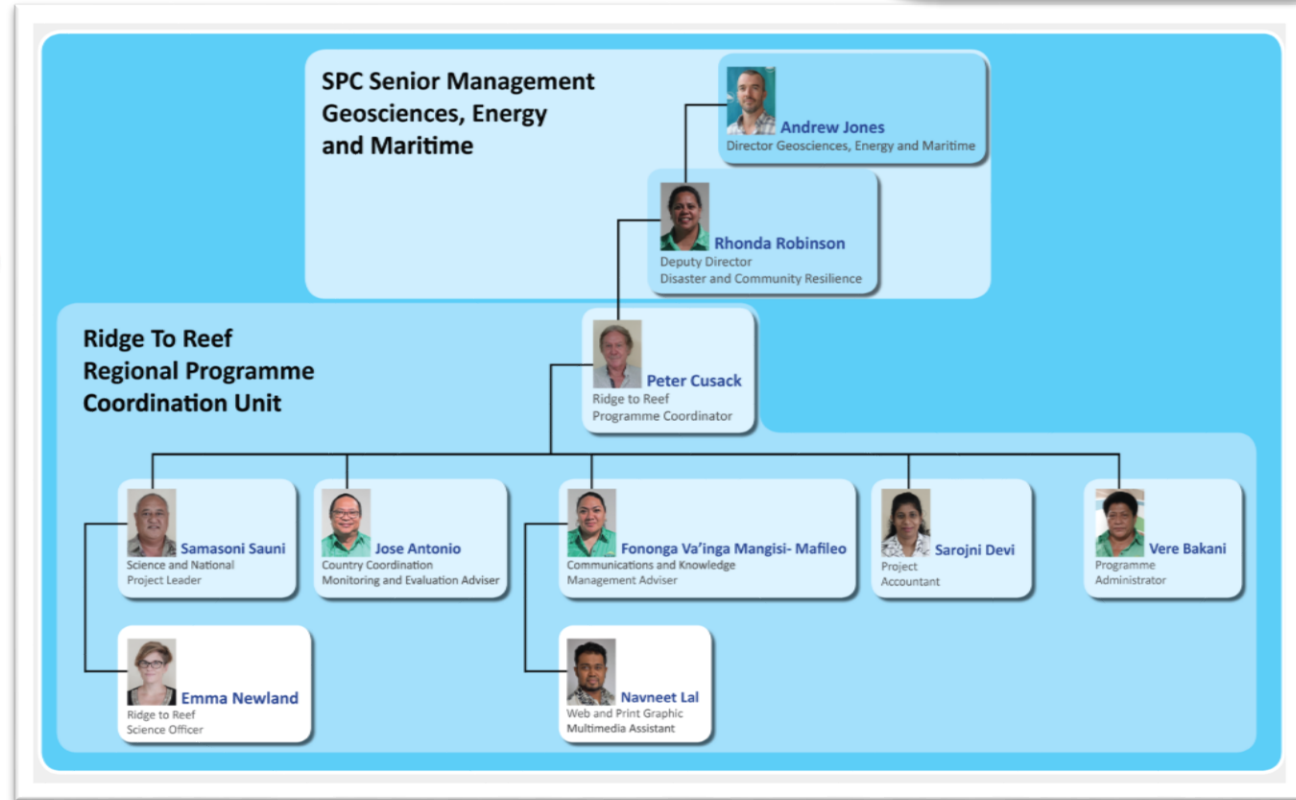


Project facts

- ❑ **GEF ID:** 5404
- ❑ **PIMS ID:** 5221
- ❑ **Fund source:** Global Environmental Facility
- ❑ **Lead GEF IA:** United Nations Development Program
- ❑ **Executing Agency:** Pacific Community (SPC)
- ❑ **Partners:** 14 Pacific Island Countries
- ❑ **Total budget:** USD 10.3 million
- ❑ **Duration:** August 2015 to September 2021



Organigram



Outcome 1.1

Successful pilot projects testing innovative solutions involving linking ICM, IWRM & CCA (linked to STAR via larger Pacific R2R network)

Forests and Education – Learn to Love Forests



PacificR2R #Vanuatu Rapid Coastal Assessment Team complete trial forest biodiversity and cover assessment of #Tagabe Upper Catchment, including information on endemic and invasive species. The Team included staff of the Department of Environmental Protection and Conservation, local experts and community volunteers (July, 2018).



Forests reduce the impacts of climate change through carbon storage.

#PacificR2R
#intlForestDay



- ❑ Rapid assessment of priority coastal area reports for four countries available.
- ❑ 14 national projects are in various stages of testing methodologies and processes that contribute to their respective stress reduction targets.
- ❑ National projects are reviewing and updating their logframes and end of project targets to ensure relevance and alignment with current national priorities and opportunities.



Outcome 1.2

National diagnostic analysis for ICM conducted for prioritizing and scaling-up key ICM/IWRM reforms and investments

Forests and Education – Learn to Love Forests



PacificR2R Samoa Rapid Coastal Assessment
Team complete trial forest biodiversity and cover assessment of Fagalii Catchment with information on endemic and invasive species. Team incl Ministry of Natural Resources and #Environment, local experts and community volunteers. (December, 2018)

Forests contribute to food security and livelihoods.



#PacificR2R
#intlForestDay



- Island diagnostic analysis reports for Cook Islands, Palau and PNG are available. IDA workshops were carried out in FSM, Samoa and Solomon Islands.
- Low-lying atoll countries have identified specific areas for replication for future investments.
- Scoping discussions with SPC geospatial experts were held to finalize the prioritization procedure.
- Regional guidelines for characterizing & prioritizing coastal areas is underway.



Outcome 1.3

Multi-stakeholder leader roundtable networks established for strengthened 'community to cabinet' ICM/IWRM



- ❑ Communities and representatives from local governments were engaged in project steering committee meetings. In some countries, traditional leaders from atolls are members of the joint board.
- ❑ No private sector or donor partnership forums have been held. Because of the limited opportunity for convening 14 national forums, the project intends to hold a single regional investment forum for R2R investment opportunities and planning.

Outcome 2.1

National & local capacity for ICM & IWRM implementation build to enable best practice in integrated land, water, forests & coastal mgt. and CCA



- ❑ Out of 44 (20 are women), 31 students are expected to complete the post graduate certificate with James Cook University.
- ❑ 14 national projects have established and/or revitalized multi-stakeholder roundtable networks. These networks meet at least once annually to discuss the status of the national project.



Outcome 2.2


Incentive structures for retention of local R2R expertise & inter-governmental dialogue on human resource needs for ICM/IWRM initiated



- ❑ The MTR recommended refining this indicator as it was found to be ambiguous and its intention unclear. SPC will engage a capacity-building consultant to identify national human capacity needs for R2R.
- ❑ Both MTR and SPC acknowledge this outcome is beyond the project's capacity and scope and will not be fully achieved.

Outcome 3.1



National and regional strategic action frameworks for ICM/IWRM endorsed nationally and regionally



“Managing our water resources is critical because it impacts our everyday lives. The IW R2R project will strengthen the capacity for watershed assessment, mapping and planning to ensure that we are sustainably managing our water resources for the future of Fiji.”

Tavenua Luka
IW R2R Project Manager
FIJI

#PacificR2R
#WWD2019
#Water4All


“The IW R2R project employs a community-to-cabinet approach to natural resource management. From mobilizing communities to care for Tagabe river health to regulating development activity within the catchment, we are connecting people with nature for sustainable livelihoods and development.”

Erickson Packett
IW R2R Project Manager
VANUATU

#PacificR2R
#WWD2019
#Water4All





“To ensure access to safe water for everyone in Tonga, the IW R2R project is working with communities to develop an Integrated Water & Coastal Management Plan for the sustainable management of our scarce natural resources.”

Silia Leger
IW R2R Project Manager
TONGA

#PacificR2R
#WWD2019
#Water4All





“To ensure availability and sustainable management of water for all, IW R2R Palau continues to empower local communities to engage in participatory water quality monitoring through the Melekeok Conservation Network (MCN) so that they may establish a long term water quality monitoring program that will be lasting beyond the project life.”

Leena Muller
IW R2R Project Manager
PALAU

#PacificR2R
#WWD2019
#Water4All




- ❑ The technical document that informs the formulation of Strategic Action Framework is available. The project plan to support the formulation of six State of the Coast Reports by the end of the project.
- ❑ Palau, Samoa, Vanuatu, and Solomon Islands are strengthening and improving domestic planning frameworks reflecting R2R best practice and investments supported by other external fund sources.
- ❑ SPC notes that actual harmonization is beyond the project scope as this encroaches on national policy-making processes.



Outcome 3.2

Coordinated approaches for R2R integrated land, water, forests and coastal mgt. and CCA achieved in 14 Pacific Island Countries



- ❑ 9 functional national Project Steering Committees were established where at least 4 countries have joint STAR and IW committees.
- ❑ The project considers that IMCs are in effect project boards/PSC and therefore there is very limited opportunity to vary the number or composition.
- ❑ Inaugural 1-day most significant change workshop will held at the margins of RSC4.

Outcome 4.1

National and regional formulation and adoption of integrated and simplified results frameworks for integrating multi-focal projects



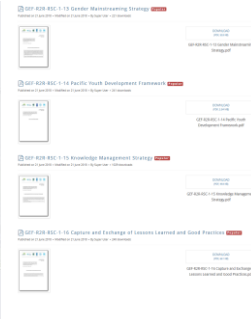
- ❑ Results-based management is promoted and tools and templates linking planning, implementation and results reporting were provided.
- ❑ MTR confirmed the usefulness of the multi-year costed work plan template for planning and guiding project implementation and reporting.
- ❑ In 2018, a harmonized results reporting tool was endorsed by RSTC and RSC.

Outcome 4.2

National & regional platforms for managing information & sharing of best practices & lessons learned in R2R established



- Website upgrade currently in procurement.
- Communications capacity-building workshops conducted (July, 2018, May, 2019).
- R2R advocacy at international fora - 3rd Inter-Regional SIDS Meeting for SAMOA Pathway MTR - GEF side event: *Experiences and Emerging lessons from GEF Pacific R2R programmatic implementation (October, 2018)*
- Participation at the 9th International Waters Conference (Marrakech) Pacific R2R Programme panel discussion – UNDP, RPCU, STAR R2R Tuvalu, STAR R2R Tonga, with IW R2R Tuvalu and IW R2R Vanuatu producing and presenting experience notes each (Nov, 2018)
- Draft experience note on Participatory Monitoring and Evaluation (Palau)
- IW:LEARN twinning activities held (University of New South Wales and Caribbean IWeco Project).



Outcome 5.1

Effective program coordination of national and regional Ridge to Reef projects



- ❑ As of February 2019, complete staff complement of RPCU was achieved consistent with the project document.
- ❑ Results-based monitoring system has been established and was reviewed by MTR.
- ❑ From July 2018, 11 country visits were held aimed at strengthening capacity of national project managers.
- ❑ A reflection & planning workshop was held in December 2018 with UNDP participation.
- ❑ Induction and coaching sessions was held.

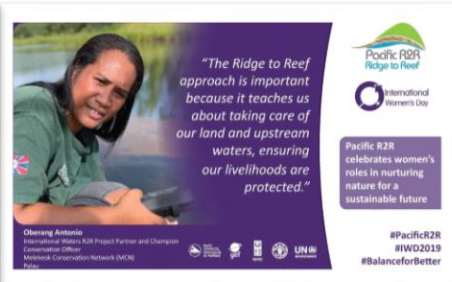


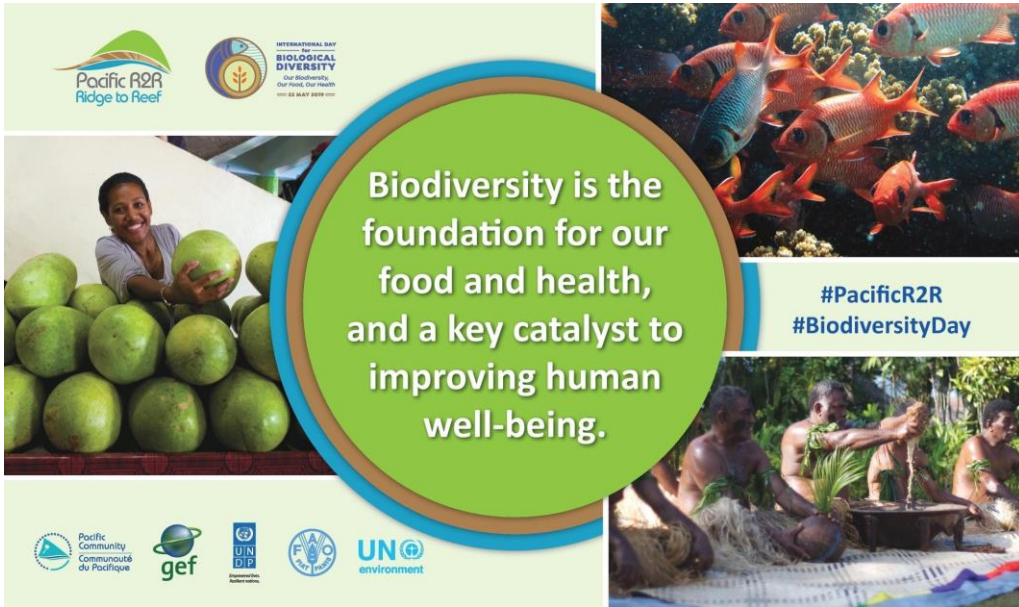


❑ The project has produced the following documents:

- Gender mainstreaming strategy and toolkit
- Conducted gender analyses for FSM, Palau, RMI, Samoa, Tuvalu and Vanuatu, and formulated gender action plans
- Tracking participation of stakeholders by recording sex-disaggregated data

❑ Gender responsive R2R guidelines and manuals





- ❑ Appointment and capacity of project managers has delayed national project implementation.
- ❑ Review of national IW project logframes are incomplete. MTR recommend that national logframes are endorsed by agency heads and approved by national project steering committees for ensuring alignment to current priorities and opportunities
- ❑ Limited compliance in the submission of an approved national IW R2R Multi-year costed work plan as basis for bottoms-up planning and ensure proactive technical and management support from RPCU
- ❑ SPC's procurement processes impede implementation of activities





“Water is everybody’s business, and the Ridge to Reef initiative in Tuvalu has demonstrated the linkage between land-based pollution and the health of coastal waters, raising local community knowledge of these interconnections and the impacts on ecosystem services and their livelihoods.”



**Leaving
no one
behind**

Pesega Lifuka
IW R2R Project Manager
TUVALU

#PacificR2R
#WWD2019
#Water4All



- ❑ Programmatic implementation of the wider GEF Pacific R2R program remains a challenge.
- ❑ Lack of clarity on the coordination role of RPCU for the GEF Pacific R2R program
- ❑





❑ Strategic

- Lack of clarity of the programming role of SPC-RPCU.

Proposed actions:

- Critical operational clarity between national STAR-IW and STAR-RPCU interaction should be established.
- As a minimum, the national STAR R2R projects agree to provide the RPCU with data, information and reports, and participate in the development of the R2R knowledge products (see also MTR recommendation number 13).

□ Operational

- Lack of reporting against co-financing commitments

Proposed actions:

- National IW R2R projects adhere to their commitment.
- National government agencies through the Inter-Ministry Committees advocate mainstreaming R2R in planning and policies
- National logframes and multi-year costed work plans need to be endorsed by agency heads and approved by the national Project Steering Committees.





The programmatic approach provides countries and region opportunities to gain synergies and enhance capacities across the R2R landscape (i.e. GEF focal areas) and science to policy, community to cabinet.



□ Financial notes

- Status of financial utilization of the **five components**
- Costs related to **Project Management** is reported as Component 6
- Actual expenditures as of June 30, 2019 **does not** include unliquidated funds advanced to the 14 national projects
- Amount reported in USD currency
-

Comp 1 National demonstrations

Comp 2 Strengthening capacities for R2R

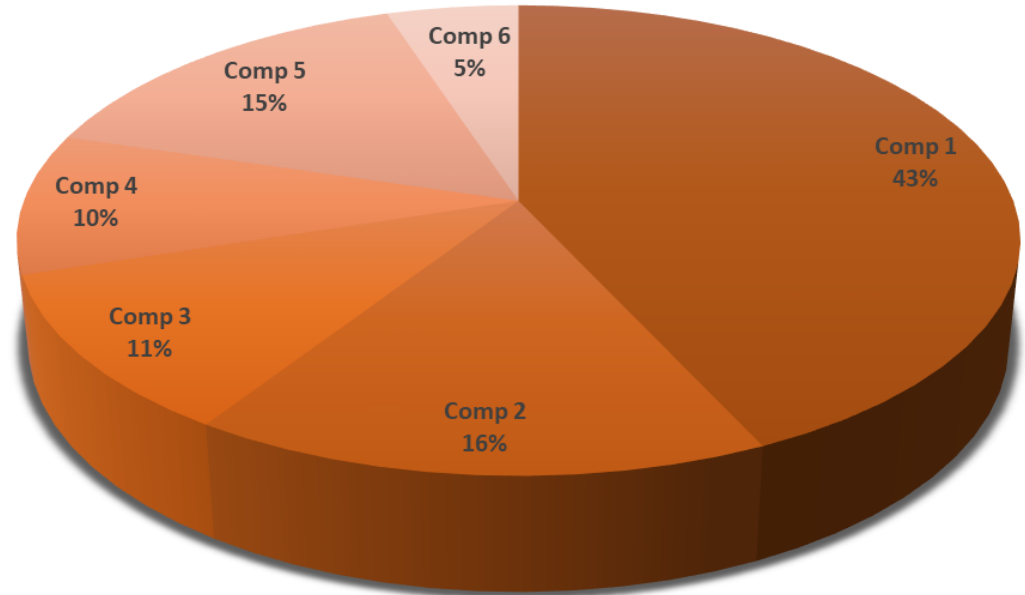
Comp 3 R2R mainstreaming

Comp 4 Adaptive management, M&E and KM

Comp 5 R2R coordination

Comp 6 Program management

Budget share per component



Comp 1 National demonstrations

Comp 2 Strengthening capacities for R2R

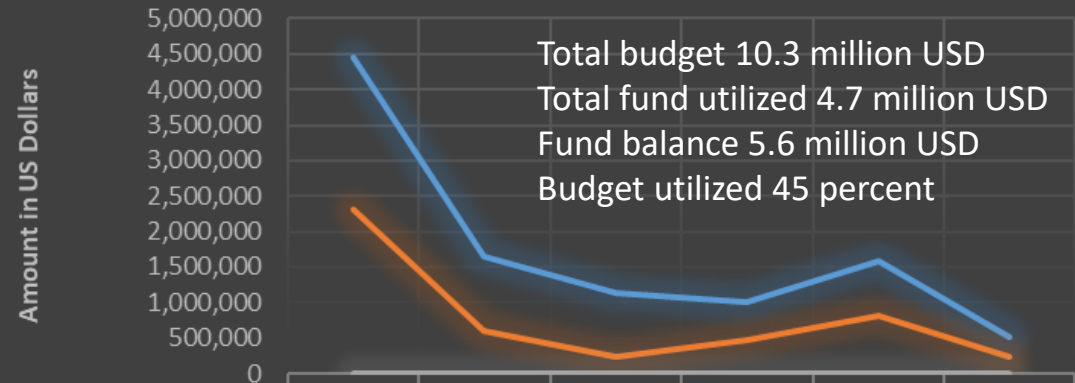
Comp 3 R2R mainstreaming

Comp 4 Adaptive management, M&E and KM

Comp 5 R2R coordination

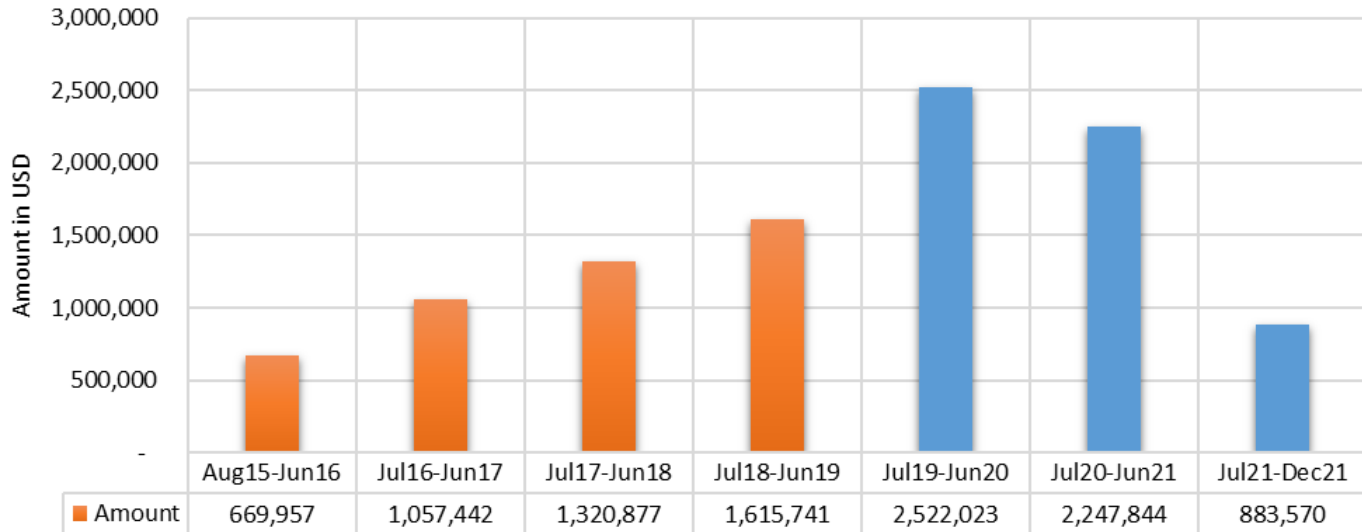
Comp 6 Program management

Budget utilization rate



	Comp 1	Comp 2	Comp 3	Comp 4	Comp 5	Comp 6
— Budget	4,450,000	1,650,000	1,125,000	1,000,000	1,576,582	515,872
— Expenditures	2,310,506	606,646	242,965	469,648	807,764	226,488
— Utilization Rate	52%	37%	22%	47%	51%	44%

Expenditures and forecasts



Pacific Islands Ridge to Reef National Priorities – Integrated water, land, forest and coastal management to preserve biodiversity, ecosystem services, store carbon, improve climate resilience and sustain livelihoods



VINAKA
THANK YOU VERY MUCH

Presented by:

Peter Cusack, Regional program coordinator

Presentation prepared by:

Jose J. Antonio, Country coordination, monitoring and evaluation adviser

Photo credits

R2RTweeters, RPCU-photos

Layout

Navneet Lal, Graphics and multimedia assistant

References:

GEF Pacific Ridge to Reef PFD

Regional IW R2R Project Document

Project Implementation Reports